

Section 12-95-13
 As referred to in
 Engr. Tie Book

FILED 2004-0474
 RECORDER'S OFFICE
 CHICKASAW COUNTY, IOWA

2004 MAR 3 AM 8 49

CINDY MESSERSMITH
 COUNTY RECORDER

TeKIPPE ENGINEERING, P.C., 128 South Vine Street, West Union, Iowa 52176 Phone (563) 422-5131

UNITED STATES PUBLIC LAND SURVEY CORNER CERTIFICATE

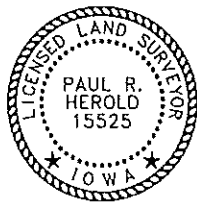
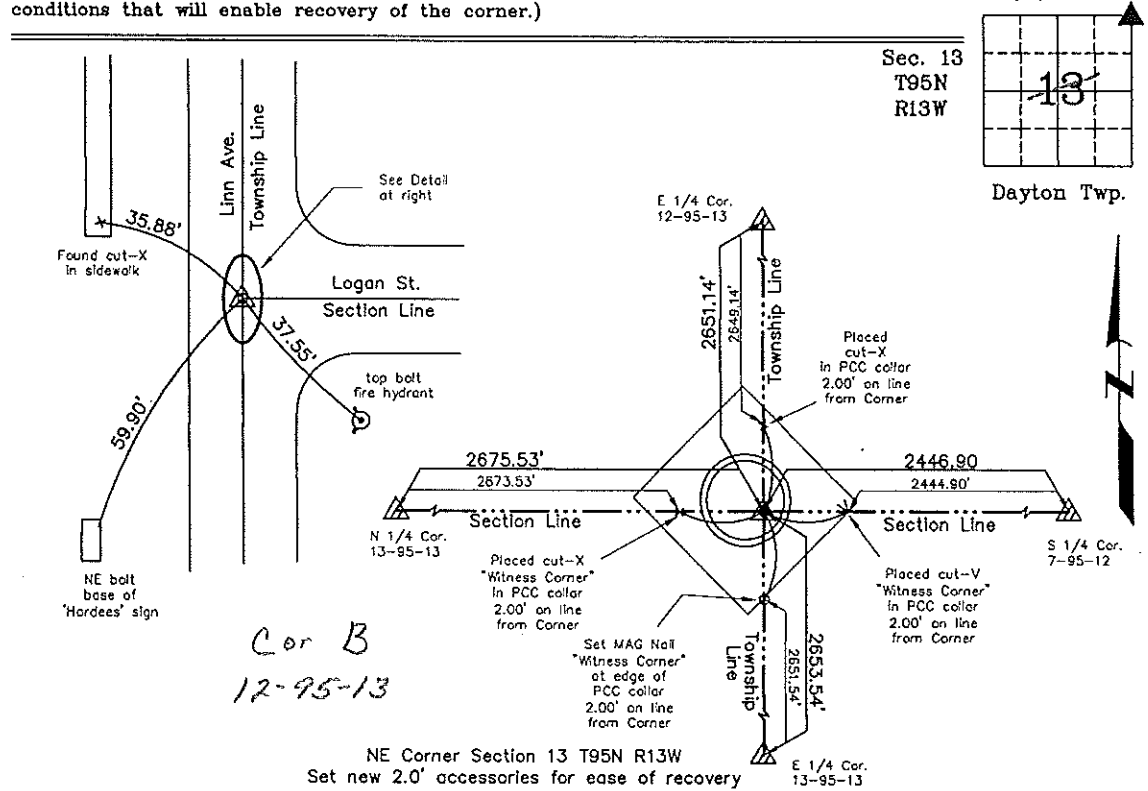
OF
 Land Survey Monuments situated in Section 13, Township 12-95 North, Range 13 West of the Fifth Principal Meridian, CHICKASAW County, Iowa.
 Previously recorded in Book 148 Page 139 in County Recorder's Office.
 (book, page, document number, etc.)

(Show reason for preparing this certificate, the evidence and detailed procedures used in establishing the corner positions and monumentation found or placed.)

Monument Description and Remarks: **NE Corner Section 13 T95N R13W:** The previous Section Corner Certificate, recorded in the Chickasaw County Recorder's Office in Book 148, Page 139, necessarily left only a temporary monument. It is hoped this Certificate will enable a more easily recoverable position. It must be stated that a simple cross between the 2 foot Witness Corners will result in a position that is 0.04' Southerly of the true position, but on line in the other direction. The position still lies on a manhole lid.

PLAN - VIEW

(Show a minimum of three reference ties to durable physical objects, relevant monuments and physical conditions that will enable recovery of the corner.)



I hereby certify that this land surveying document was prepared and the related survey work was performed by me or under my direct personal supervision and that I am a duly licensed Land Surveyor under the laws of the State of Iowa.

Paul R. Herold 3-2-04
 Paul R Herold Date
 License number 15525
 My license renewal date is December 31, 2004.
 Sheets covered by this seal: Individual

List Corners to be Indexed			
Corners	Section	Twp.	Range
NE	13	95N	13W
SE	12	95N	13W
SW	7	95N	12W
NW	18	95N	12W

X:\Section Corners\Sec. 13\13-95-13e.dwg
 Project Number 03207.LS