

Chickasaw Co. Recorder
 Cindy Messersmith
Fee Book 2014-1712
 12/03/2014 @0300PM
 SCC: SEC COR CERT
 Book: Page: # Pages: 1
 Total Fees: \$7.00

Prepared by & Return to: Herold - Reicks Surveying, 10 East Main Street, New Hampton, IA 50659, Ph. 641-394-2725

UNITED STATES PUBLIC LAND SURVEY CORNER CERTIFICATE

Land Survey Monuments situated in Section 14, Township 95 North, Range 13 West of the Fifth Principal Meridian, Chickasaw County, Iowa. 1. and 2.) Previously not recorded in the County Recorder's office.

This certificate is being prepared in compliance with Iowa Code Chapter 355.11 because:

1 & 2 There is no certificate on file for this corner.
 There are no longer three valid ties of record.
 There are changes to reference ties of record.
 There is change of monumentation of record.
 To clarify description of record monument (ties).

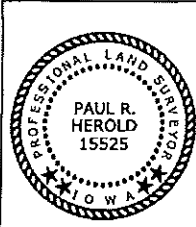
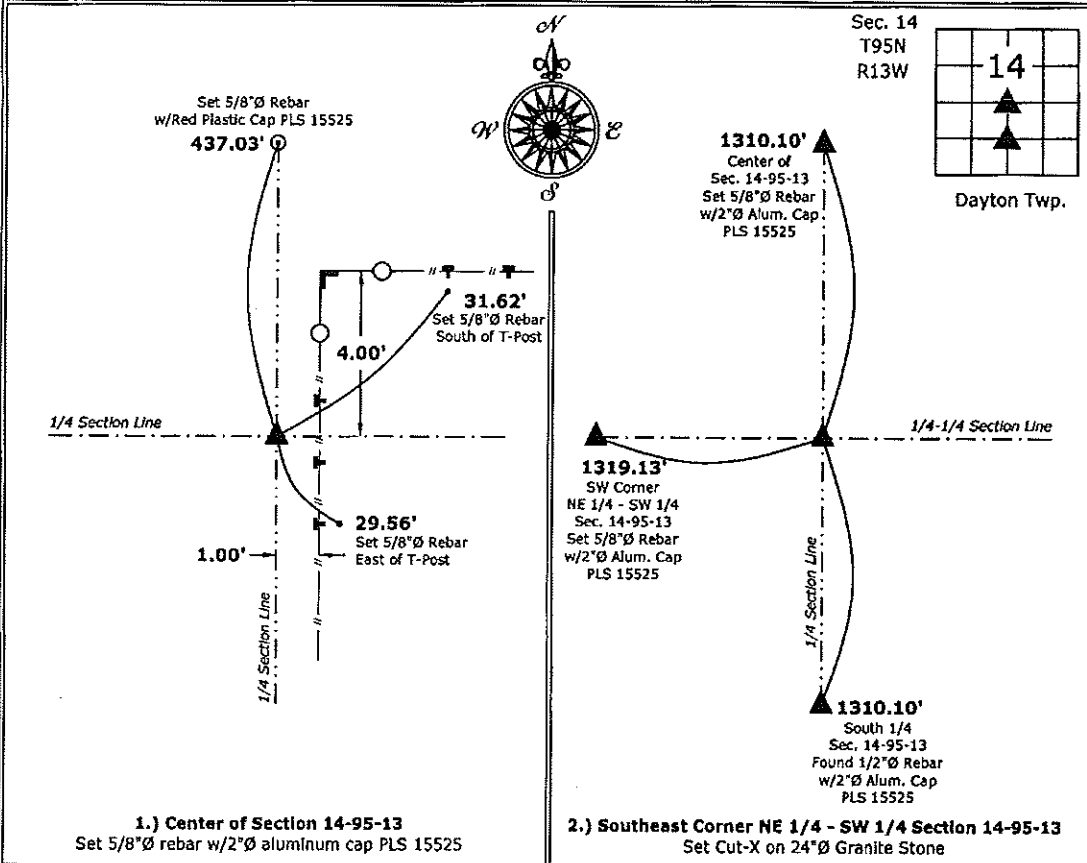
Monument Description and Remarks:

- 1.) **Center:** Set 5/8"Ø rebar with 2"Ø aluminum cap PLS 15525 at the Intersection of the Quarter Section lines.
- 2.) **Southeast Corner NE 1/4 - SW 1/4 Corner:** Set Cut-X on 24"Ø Granite Stone equidistant and online between the South 1/4 Corner and the Center of Section 14-95-13.

Note: There are no records of the perpetuation of a monument at these positions.

PLAN - VIEW

(Show a minimum of three reference ties to durable physical objects, relevant monuments and physical conditions that will enable recovery of the corner.)



I hereby certify that this land surveying document was prepared and the related survey work was performed by me or under my direct personal supervision and that I am a duly licensed Land Surveyor under the laws of the State of Iowa.

Paul R. Herold
 Paul R. Herold Date: 11-25-14
 License number 15525
 My license renewal date is December 31, 2014.
 Sheets covered by this seal: Individual sheet only

List Corners to be Indexed

Corners	Section	Twp.	Range
CTR	14	95	13
SE-NE-SW	14	95	13

Project Number: 2014-240
 FB: Chickasaw County 7, Pgs. 12-13

File: S:_CD Projects\County Control Systems\CHICKASAW\CHICK-28 (New Hampton)\CHICK-28.dwg, 11/28/2014 2:14:21 PM