

Chickasaw Co. Recorder  
 Cindy Messersmith  
**Fee Book 2014-0590**  
 05/05/2014 @0853AM  
 SEC COR CERT  
 Book: Page: # Pages: 1  
 Total Fees: \$7.00

Prepared by & Return to: Herold - Reicks Surveying, 10 East Main Street, New Hampton, IA 50659, Ph. 641-394-2725

**UNITED STATES PUBLIC LAND SURVEY CORNER CERTIFICATE**

Land Survey Monuments situated in Section 13, Township 95 North, Range 13 West of the Fifth Principal Meridian, Chickasaw County, Iowa. 1.) Previously recorded in Bk. 153, Pg. 145, in the County Recorder's office. 2.) Not previously recorded in the County Recorder's office.

This certificate is being prepared in compliance with Iowa Code Chapter 355.11 because:

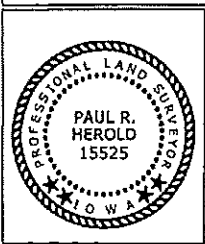
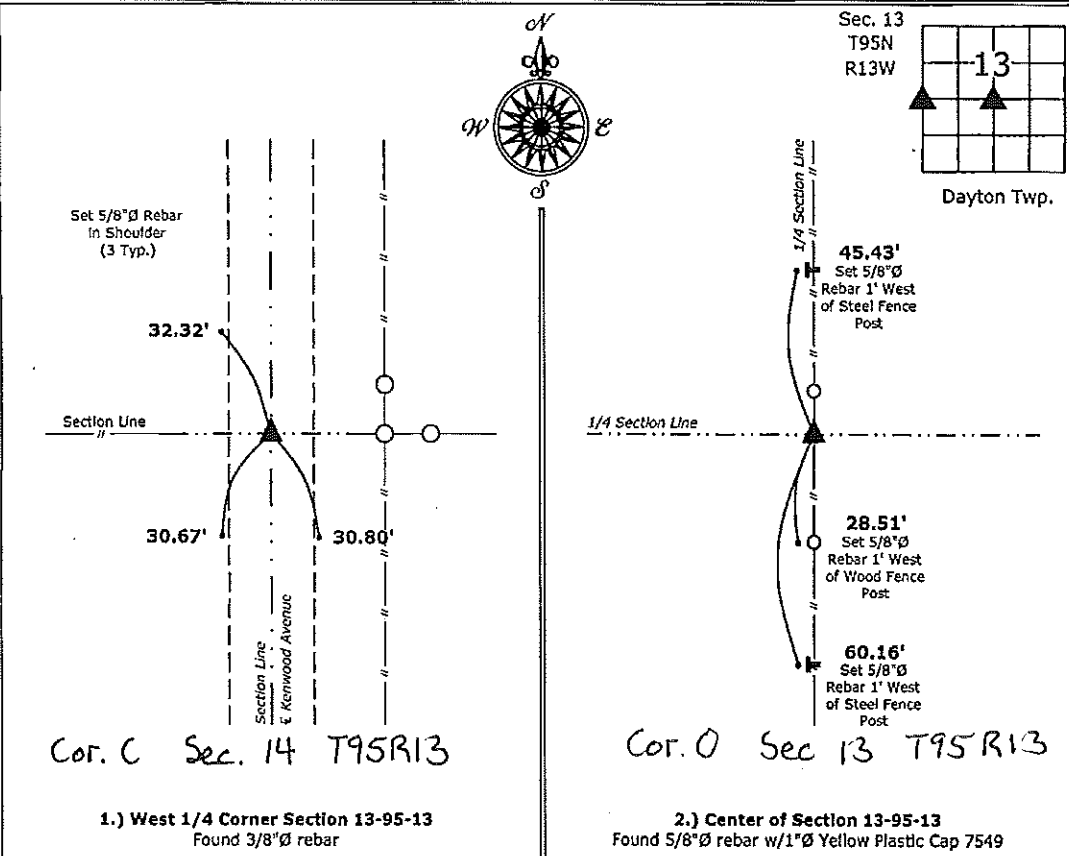
- 2  There is no certificate on file for this corner.
- 1  There are no longer three valid ties of record.
- There are changes to reference ties of record.
- There is change of monumentation of record.
- To clarify description of record monument (ties).

Monument Description and Remarks:

- 1.) **West 1/4 Corner:** Found 3/8"Ø rebar with information obtained from a previous Section Corner Certificate, all ties were missing, set new ties to update the corner.
- 2.) **Center of Section:** Found 5/8"Ø rebar w/1"Ø Yellow Plastic Cap 7549 with information obtained on a survey and plat made by Thomas V. Craft, recorded May 8, 1984 on file in the Chickasaw County Recorders Office.

**PLAN - VIEW**

(Show a minimum of three reference ties to durable physical objects, relevant monuments and physical conditions that will enable recovery of the corner.)



I hereby certify that this land surveying document was prepared and the related survey work was performed by me or under my direct personal supervision and that I am a duly licensed Land Surveyor under the laws of the State of Iowa.

*Paul R. Herold 5-2-14*  
 Paul R. Herold Date:  
 License number 15525  
 My license renewal date is December 31, 2014.  
 Sheets covered by this seal: Individual sheet only

List Corners to be Indexed			
Corners	Section	Twp.	Range
W 1/4	13	95	13
CTR	13	95	13

Project Number: 2014-021  
 FB: New Hampton 2, Pgs. 18-19

File: S:\\_CAD Projects\County Control Systems\CHICKASAW\CHICK-28 (New Hampton)\CHICK-28.dwg, 5/2/2014 4:25:39 PM

# UNITED STATES PUBLIC LAND SURVEY CORNER CERTIFICATE

OF

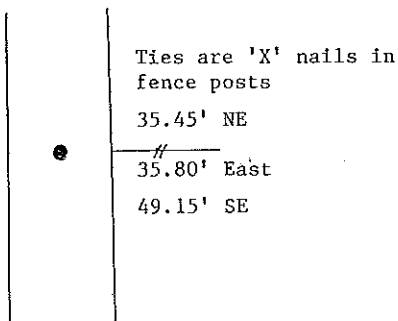
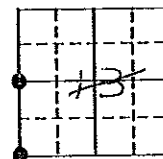
Land Survey Monuments situated in Section 15 14, Township 95 North, Range 13 West, of the Fifth Principal Meridian, Chickasaw County, Iowa. Previously recorded in N/A in County Recorder's Office.

(Show reason for preparing this certificate, the evidence and detailed procedures used in establishing the corner positions and monumentation found or placed.)  
Monument Description and Remarks: Found corners as shown below. Measured in new ties.

### PLAN - VIEW

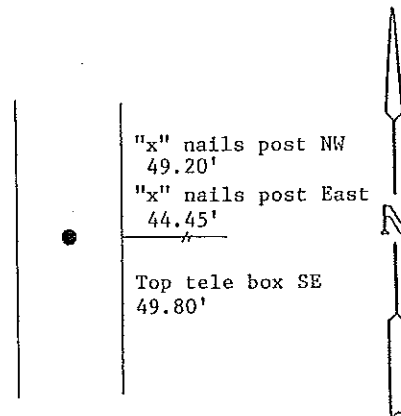
(Show a minimum of three reference ties to durable physical objects, relevant monuments and physical conditions that will enable recovery of the corner.)

*Section 14-95-13  
As referred to in  
Engr. Tie Book*



West 1/4 corner  
Found 3/8" iron pin

*Corner C  
14-95-13*



Southwest corner  
Found spike over iron pin

*Cor B-  
14-95-13*

I hereby certify that the survey work was completed and this certificate was prepared by me or under my direct personal supervision and that I am a duly registered land surveyor under the laws of the state of Iowa.

Signature: Steve Busse  
Name typed or printed: STEVE BUSSE  
Date: 10/4/93 Reg. No. 9018

MY REGISTRATION IS SUBJECT TO RENEWAL DEC. 31, 1994

SEAL

Corners	List Corners to be Indexed		
	Section	Twp	Range
SW cor.	13	95	13
West 1/4 cor.	13	95	13

*Cor B 14-95-13*

*Placed in Tie Book  
10/11/93*