

Herold - Reicks Surveying, 25 1/2 East Main Street, Suite 204, New Hampton, IA 50659, Ph. 641-394-2725

UNITED STATES PUBLIC LAND SURVEY CORNER CERTIFICATE

Land Survey Monuments situated in:
 Section 11, Township 95 North, Range 13 West of the Fifth Principal Meridian,
Chickasaw County, Iowa. Previously recorded in Bk. 158, Pg. 405
 in County Recorder's Office. (book, page, document number, etc.)

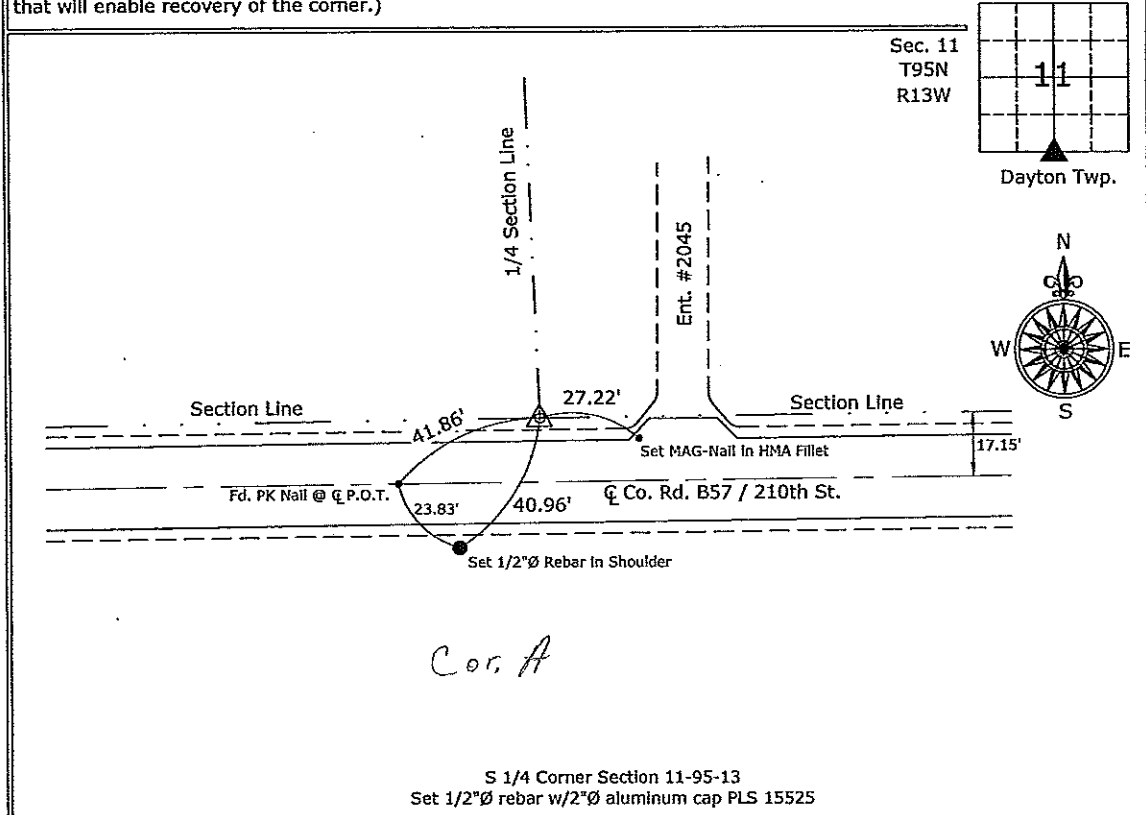
(Show reason for preparing this certificate, the evidence and detailed procedures used in establishing the corner positions and monumentation found or placed.)

Monument Description and Remarks:

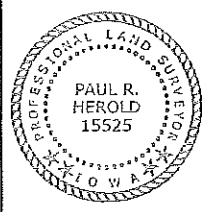
S 1/4 Corner Section 11-95-13, Set 1/2"Ø rebar w/2"Ø aluminum cap PLS 15525, by intersecting a line from the N 1/4 Corner of the Section through 3/4 of a mile of fence running South with a line 17.15 feet North of and parallel to the Centerline of County Road B57 / 210th Street as per County Road As-Built Plans, the previous Section Corner Certificate mistakenly referenced a Centerline P.O.T. as the Section Corner.

PLAN - VIEW

(Show a minimum of three reference ties to durable physical objects, relevant monuments and physical conditions that will enable recovery of the corner.)



S 1/4 Corner Section 11-95-13
 Set 1/2"Ø rebar w/2"Ø aluminum cap PLS 15525



I hereby certify that this land surveying document was prepared and the related survey work was performed by me or under my direct personal supervision and that I am a duly licensed Land Surveyor under the laws of the State of Iowa.

Paul R. Herold 6-4-07
 Date: _____
 Paul R. Herold
 License number 15525
 My license renewal date is December 31, 2008.
 Sheets covered by this seal: Individual sheet only

List Corners to be Indexed			
Corners	Section	Twp.	Range
S 1/4	11	95	13
Project Number: 2007-017			
FB: New Hampton 1, Pgs. 6-8			

FILE COPY
 File: S:\Projects\2007\2007-017.dwg, 6/4/2007 4:41:45 PM

Section 2-95-13
As referred to in
Engr. Title Book

UNITED STATES PUBLIC LAND SURVEY CORNER CERTIFICATE

OF 2

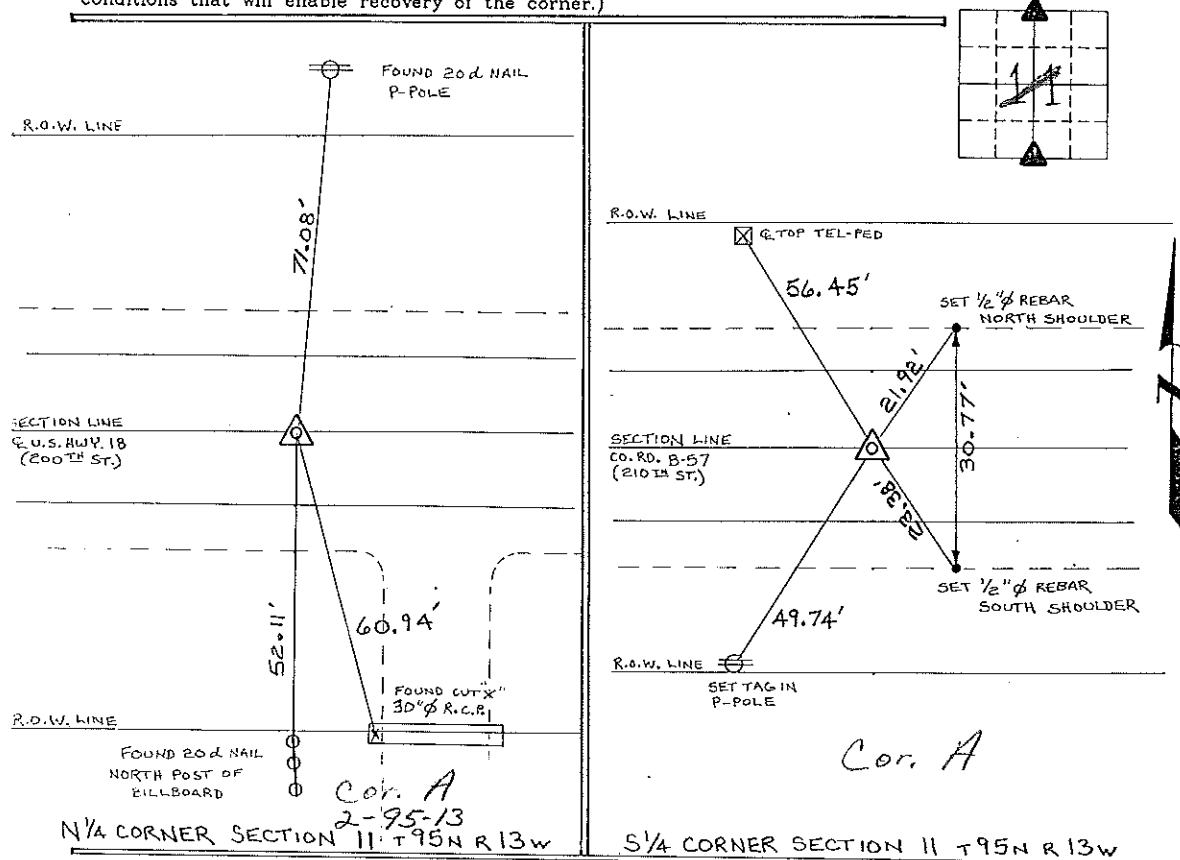
Land Survey Monuments situated in Section 11, Township 95 N North, Range 13 W West, of the Fifth Principal Meridian, CHICKASAW County, Iowa.
Previously recorded in NONE in County Recorder's Office.
(book, page, document number, etc.)

(Show reason for preparing this certificate, the evidence and detailed procedures used in establishing the corner positions and monumentation found or placed.)

Monument Description and Remarks: N 1/4 CORNER SECTION 11 T 95 N R 13 W:
FOUND I.D.O.T. ALUMINUM MONUMENT & U.S. HWY. 18,
S 1/4 CORNER SECTION 11 T 95 N R 13 W: FOUND HINGE NAIL & COUNTY ROAD,
B-57 (210TH ST.)

PLAN - VIEW

(Show a minimum of three reference ties to durable physical objects, relevant monuments and physical conditions that will enable recovery of the corner.)



I hereby certify that the survey work was completed and this certificate was prepared by me or under my direct personal supervision and that I am a duly registered land surveyor under the laws of the state of Iowa.

Signature: Lyle G. TeKippe
Lyle G. TeKippe

Date: 8-25-95 Reg. No. 7060
My Registration Renewal Date is December 31, 1996



List Corners to be Indexed

Corners	Section	Twp.	Range
N 1/4	11	95 N	13 W
Cor. A 2-95-13			
S 1/4	11	95 N	13 W
Cor. B 11-95-13			