

Section 11-95-13
 As referred to in
 Engr. The Book

FILED 2005-1874

RECORDER'S OFFICE
 HICKASAW COUNTY, IOWA

2005 AUG 31 AM 9 04

CINDY MESSERSMITH
 COUNTY RECORDER

TeKIPPE ENGINEERING, P.C., 128 South Vine Street, West Union, Iowa 52175 Phone (563) 422-5131

UNITED STATES PUBLIC LAND SURVEY CORNER CERTIFICATE

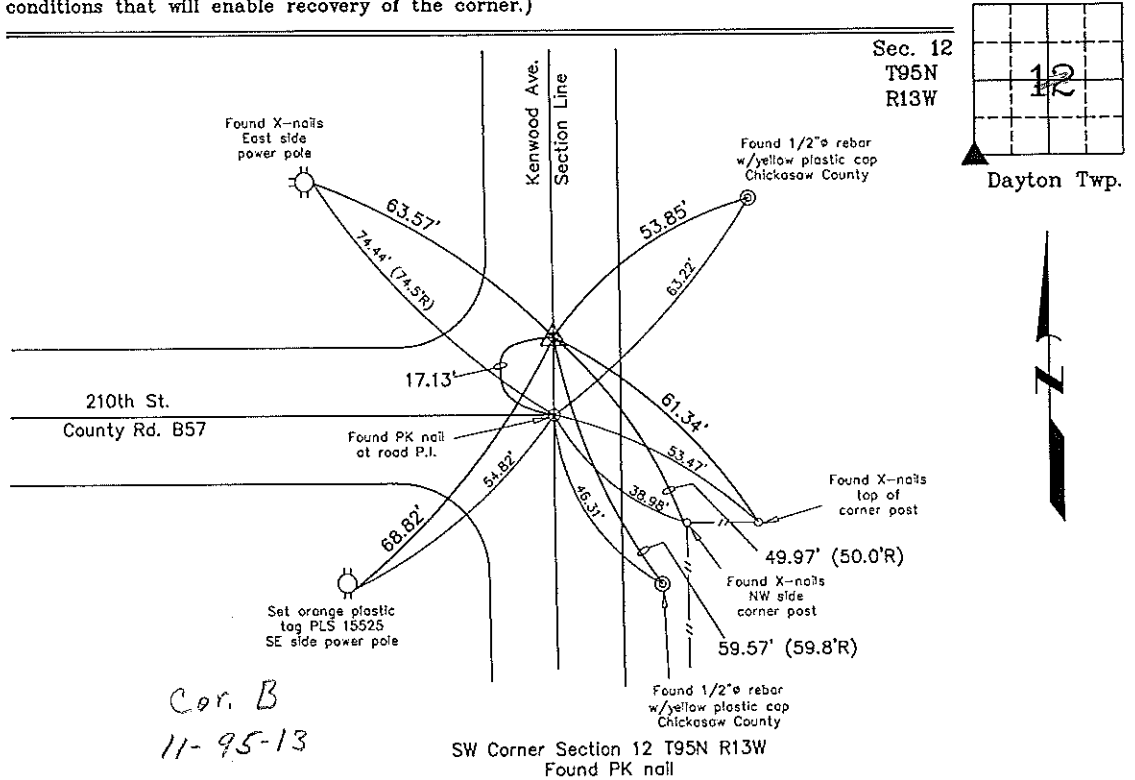
OF
 Land Survey Monuments situated in Section 12, Township 95 North, Range 13 West of the Fifth Principal Meridian, CHICKASAW County, Iowa.
 Previously recorded in none in County Recorder's Office.
 (book, page, document number, etc.)

(Show reason for preparing this certificate, the evidence and detailed procedures used in establishing the corner positions and monumentation found or placed.)

Monument Description and Remarks: SW CORNER SECTION 12 T95N R13W: Found PK nail with information obtained from the Chickasaw County Engineer's Office in Field Book Dayton Twp. Corner Ties, Section 11, Corner 'B'.

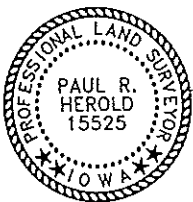
PLAN - VIEW

(Show a minimum of three reference ties to durable physical objects, relevant monuments and physical conditions that will enable recovery of the corner.)



Cor. B
 11-95-13

SW Corner Section 12 T95N R13W
 Found PK nail



I hereby certify that this land surveying document was prepared and the related survey work was performed by me or under my direct personal supervision and that I am a duly licensed Land Surveyor under the laws of the State of Iowa.

Paul R. Herold 8-29-05
 Paul R. Herold Date
 License number 15525
 My license renewal date is December 31, 2008.
 Sheets covered by this seal: Individual

List Corners to be Indexed			
Corners	Section	Twp.	Range
SW	12	95N	13W

X:\Section Corners\Sec. 12\12-95-13u.dwg

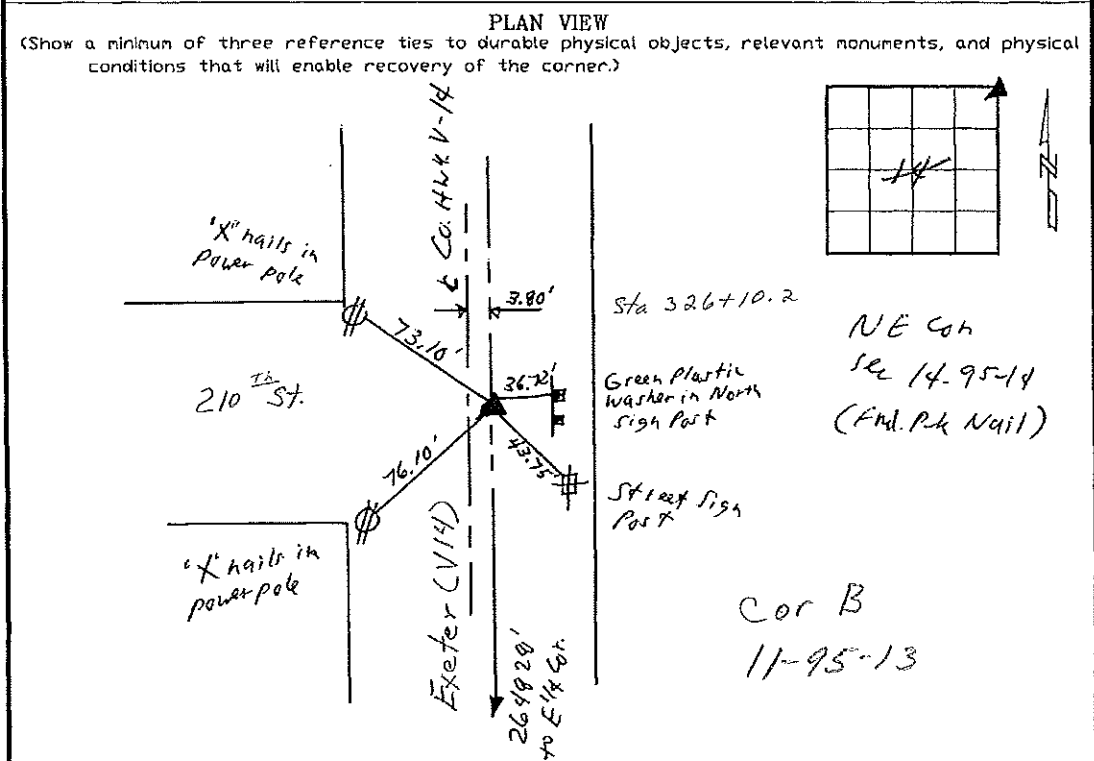
Section 11-95-13
As referred to in
Engr Tie Book

FILED 2003-2239
RECORDER'S OFFICE
CHICKASAW COUNTY, IOWA
2003 JUL 17 ^{Fee 11.00} AM 9 08
CINDY MESSERSMITH
COUNTY RECORDER

Harlan K. Schuck, L.S., Ryken Engineering, 711 Park Avenue, Ackley, IA. 50601-Ph. 641-847-3273

UNITED STATES PUBLIC LAND SURVEY CORNER CERTIFICATE
OF

Land Survey Monuments situated in Section 14 Township 95 Range 14
of the Fifth Principal Meridian, CHICKASAW County, Iowa,
Previously recorded in Not Applicable in County Recorder's Office
(Show reason for preparing this certificate, the evidence and detailed procedures used in establishing
the corner positions and monumentation found or placed.)
Monument Description and Remarks: Used NE Cor to tie in survey in NE 1/4
No Certificate on File
NE Cor. - Found P-k Nail in A.C. paving or set by Gentry 9-98
Matches tier of record as per Co. Engr.



I hereby certify that this land surveying document was prepared and the related survey work was performed by me or under my direct personal supervision and that I am a duly licensed Land Surveyor under the laws of the State of Iowa.
Harlan K. Schuck
HARLAN K. SCHUCK
Date: 7-2-03 License number: 9962
My license renewal date is December 31, 2003

Corners	Section	Twp	Range
NE	14	95N	14W



Filed 8-13-03