

Chickasaw Co. Recorder  
 Cindy Messersmith  
**Fee Book 2014-1710**  
 12/03/2014 @02:57 PM  
 SCC: SEC COR CERT  
 Book: Page: # Pages: 1  
 Total Fees: \$7.00

Prepared by & Return to: Herold - Reicks Surveying, 10 East Main Street, New Hampton, IA 50659, Ph. 641-394-2725

### UNITED STATES PUBLIC LAND SURVEY CORNER CERTIFICATE

Land Survey Monuments situated in Section 14, Township 95 North, Range 13 West of the Fifth Principal Meridian, Chickasaw County, Iowa. 1. and 2.) Previously not recorded in the County Recorder's office.

This certificate is being prepared in compliance with Iowa Code Chapter 355.11 because:

- 1 & 2  There is no certificate on file for this corner.  
 There are no longer three valid ties of record.  
 There are changes to reference ties of record.  
 There is change of monumentation of record.  
 To clarify description of record monument (ties).

Monument Description and Remarks:

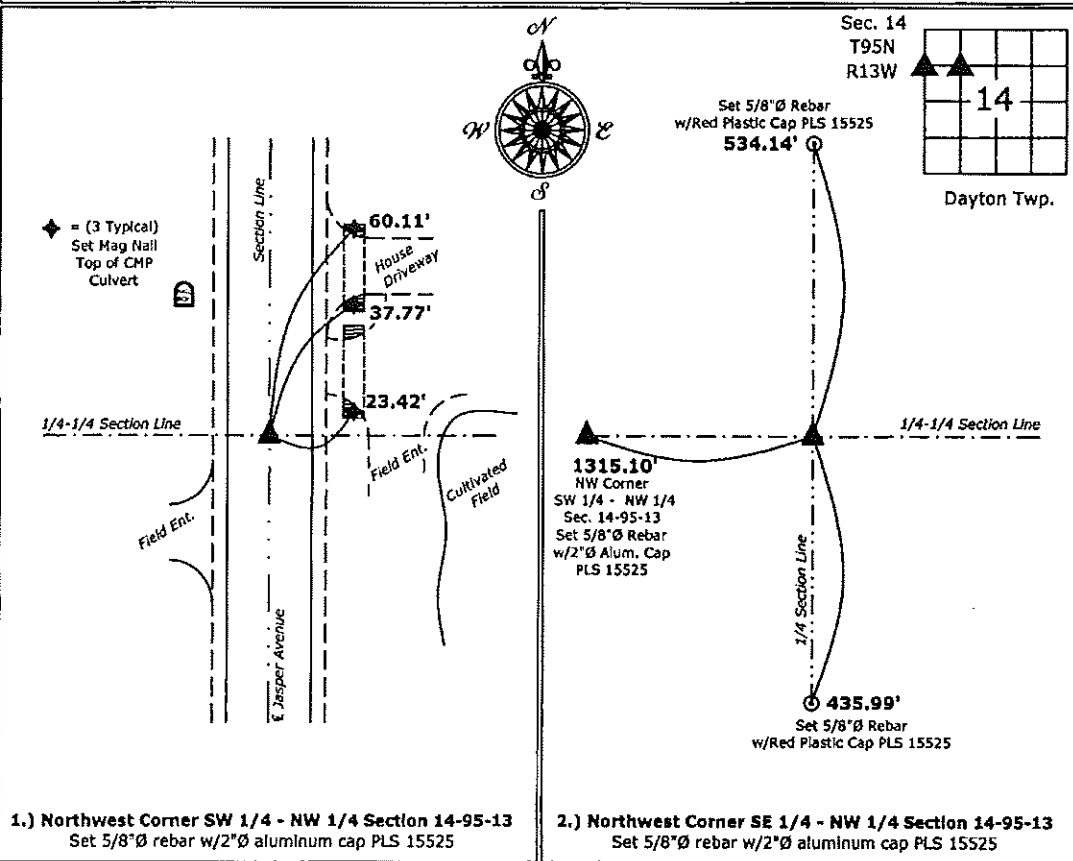
1.) Northwest Corner SW 1/4 - NW 1/4: Set 5/8"Ø rebar with 2"Ø aluminum cap PLS 15525 equidistant and online between the Northwest and West 1/4 Corners of Section 14-95-13.

2.) Northwest Corner SE 1/4 - NW 1/4: Set 5/8"Ø rebar with 2"Ø aluminum cap PLS 15525 at the intersection of the Quarter-Quarter Section lines.

Note: there are no records of the perpetuation of monuments at these positions.

#### PLAN - VIEW

(Show a minimum of three reference ties to durable physical objects, relevant monuments and physical conditions that will enable recovery of the corner.)



1.) Northwest Corner SW 1/4 - NW 1/4 Section 14-95-13  
 Set 5/8"Ø rebar w/2"Ø aluminum cap PLS 15525

2.) Northwest Corner SE 1/4 - NW 1/4 Section 14-95-13  
 Set 5/8"Ø rebar w/2"Ø aluminum cap PLS 15525



I hereby certify that this land surveying document was prepared and the related survey work was performed by me or under my direct personal supervision and that I am a duly licensed Land Surveyor under the laws of the State of Iowa.  
*Paul R. Herold*  
 Paul R. Herold Date: 11-28-14  
 License number 15525  
 My license renewal date is December 31, 2014.  
 Sheets covered by this seal: Individual sheet only

List Corners to be Indexed			
Corners	Section	Twp.	Range
NW-SW-NW	14	95	13
NW-SE-NW	14	95	13

Project Number: 2014-240  
 FB: Chickasaw County 7, Pgs. 12-13

File: S:\\_CAD Projects\County Control Systems\CHICKASAW\CHICK-28.dwg, 11/28/2014 2:14:10 PM