

Chickasaw Co. Recorder
 Cindy Messersmith
Fee Book 2014-1713
 12/03/2014 @0301PM
 SCC SEC COR CERT # Pages: 1
 Book: Page: Total Fees: \$7.00

Prepared by & Return to: Herold - Reicks Surveying, 10 East Main Street, New Hampton, IA 50659, Ph. 641-394-2725

UNITED STATES PUBLIC LAND SURVEY CORNER CERTIFICATE

Land Survey Monuments situated in Section 14, Township 95 North, Range 13 West of the Fifth Principal Meridian, Chickasaw County, Iowa. Previously recorded in Doc. #2005-0751 in the County Recorder's office.

This certificate is being prepared in compliance with Iowa Code Chapter 355.11 because:

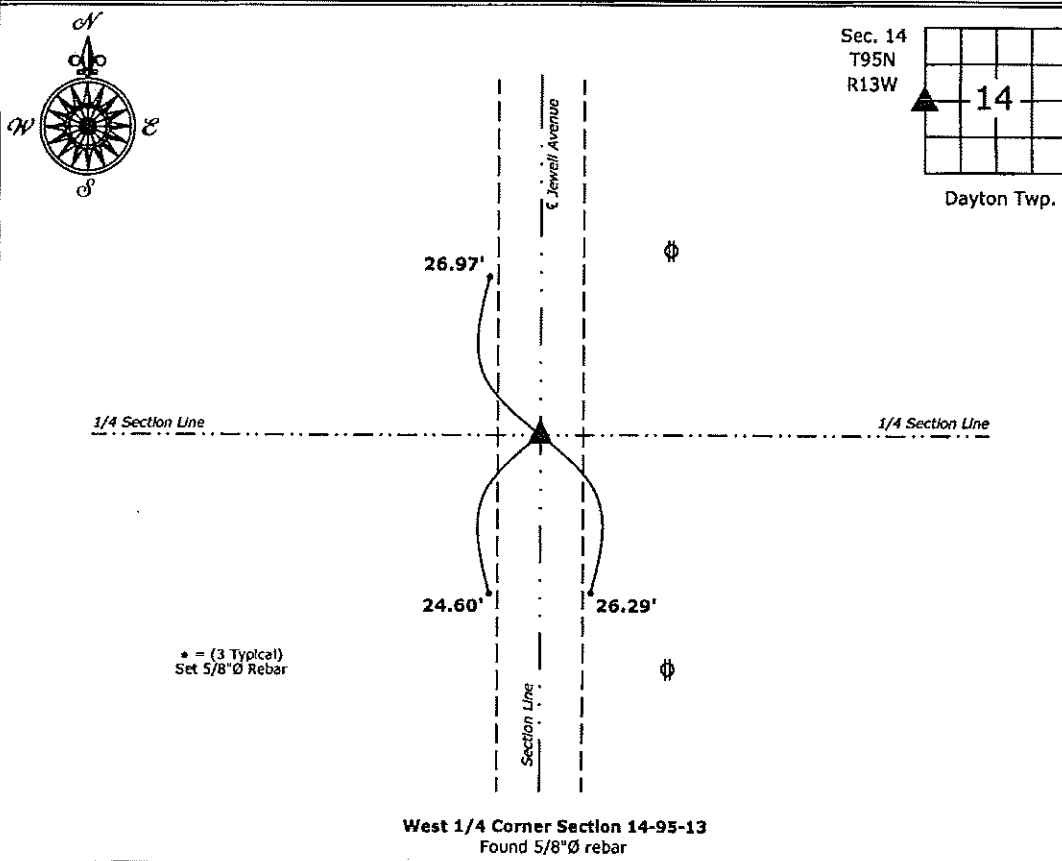
- There is no certificate on file for this corner.
- There are no longer three valid ties of record.
- There are changes to reference ties of record.
- There is change of monumentation of record.
- To clarify description of record monument (ties).

Monument Description and Remarks:

West 1/4 Corner: Found 5/8"Ø rebar 20" deep from information obtained from information obtained from the County Engineers Office, in in Field Book, Dayton Twp. Section 15, Corner "C", Set 5/8"Ø rebar w/2"Ø aluminum cap PLS 15525 over monument in order to better preserve to the position, all previous ties were missing.

PLAN - VIEW

(Show a minimum of three reference ties to durable physical objects, relevant monuments and physical conditions that will enable recovery of the corner.)



West 1/4 Corner Section 14-95-13
 Found 5/8"Ø rebar



I hereby certify that this land surveying document was prepared and the related survey work was performed by me or under my direct personal supervision and that I am a duly licensed Land Surveyor under the laws of the State of Iowa.

Paul R. Herold 11-28-14
 Paul R. Herold Date:
 License number 15525
 My license renewal date is December 31, 2014.
 Sheets covered by this seal: Individual sheet only

List Corners to be Indexed			
Corners	Section	Twp.	Range
W 1/4	14	95	13
Project Number: 2014-240			
FB: Chickasaw County 7, Pgs. 12-13			

File: S:_CSD Projects\County Control Systems\CHICKASAW\CHICK-28 (New Hampton)\CHICK-28.dwg, 11/28/2014 2:14:37 PM