

Prepared by & Return to: Herold - Reicks Surveying, 10 East Main Street, New Hampton, IA 50659, Ph. 641-394-2725

**UNITED STATES PUBLIC LAND SURVEY CORNER CERTIFICATE**

Land Survey Monuments situated in Section 14, Township 95 North, Range 13 West of the Fifth Principal Meridian, Chickasaw County, Iowa. 1. and 2.) Previously not recorded in the County Recorder's office.

This certificate is being prepared in compliance with Iowa Code Chapter 355.11 because:

- 1 & 2  There is no certificate on file for this corner.  
 There are no longer three valid ties of record.  
 There are changes to reference ties of record.  
 There is change of monumentation of record.  
 To clarify description of record monument (ties).

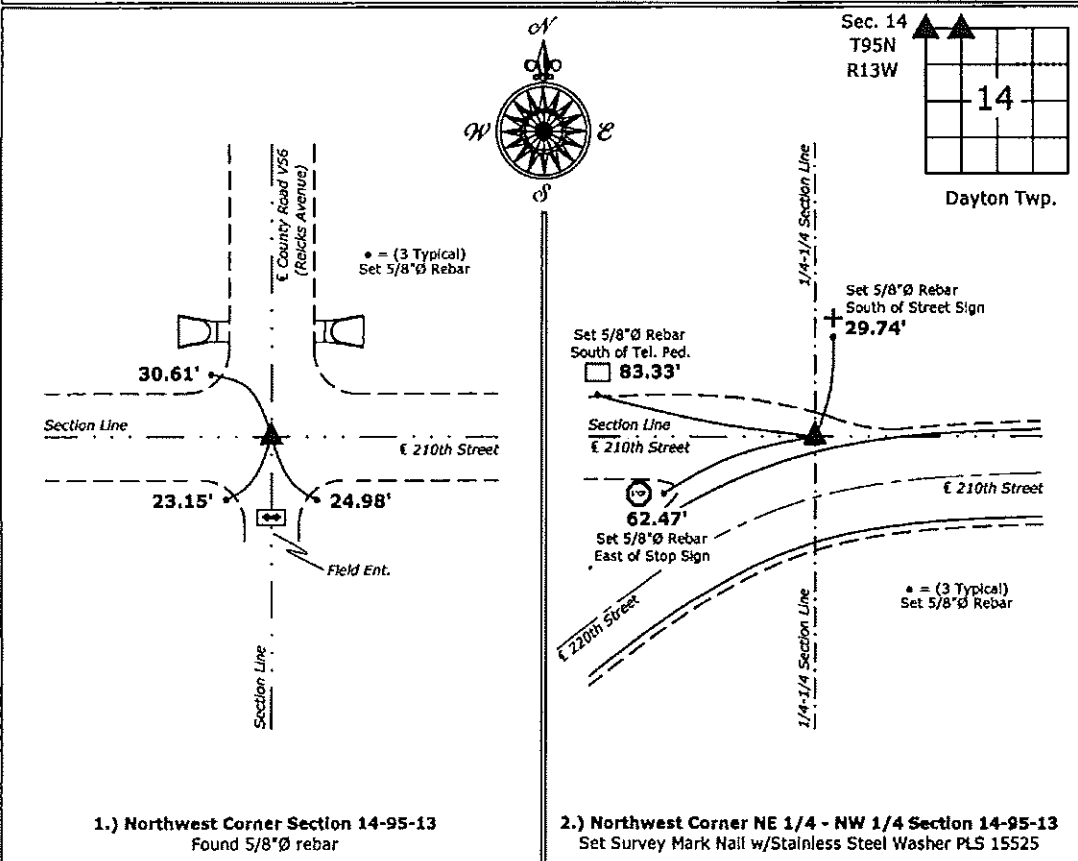
**Monument Description and Remarks:**

**1.) Northwest Corner:** Found 5/8"Ø rebar from information obtained from the County Engineers office in Field Book Dayton Twp. Corner Ties, Section 10, Corner "B"

**2.) Northwest Corner NE 1/4 - NW 1/4:** Set Survey Mark Nail w/Stainless Steel Washer PLS 15525 equidistant and online between the Northwest and North 1/4 Corners of Section 14-95-13, there are no records of the perpetuation of a monument at this position.

**PLAN - VIEW**

(Show a minimum of three reference ties to durable physical objects, relevant monuments and physical conditions that will enable recovery of the corner.)



**1.) Northwest Corner Section 14-95-13**  
Found 5/8"Ø rebar

**2.) Northwest Corner NE 1/4 - NW 1/4 Section 14-95-13**  
Set Survey Mark Nail w/Stainless Steel Washer PLS 15525



I hereby certify that this land surveying document was prepared and the related survey work was performed by me or under my direct personal supervision and that I am a duly licensed Land Surveyor under the laws of the State of Iowa.

*Paul R. Herold* 12-2-14  
 Paul R. Herold Date:  
 License number 15525  
 My license renewal date is December 31, 2014.  
 Sheets covered by this seal: Individual sheet only

List Corners to be Indexed			
Corners	Section	Twp.	Range
NW	14	95	13
NW-NE-NW	14	95	13

Project Number: 2014-240  
 FB: Chickasaw County 7, Pgs. 12-13

File: S:\\_CSD Projects\County Control Systems\CHICKASAW\CHICK-28 (New Hampton)\CHICK-28.dwg, 12/27/2014 5:18:04 PM

# UNITED STATES PUBLIC LAND SURVEY CORNER CERTIFICATE

OF

Land Survey Monuments situated in Section 22, Township 95 North, Range 13 West, of the Fifth Principal Meridian, Chickasaw County, Iowa.  
Previously recorded in N/A in County Recorder's Office.

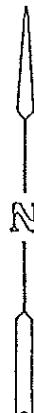
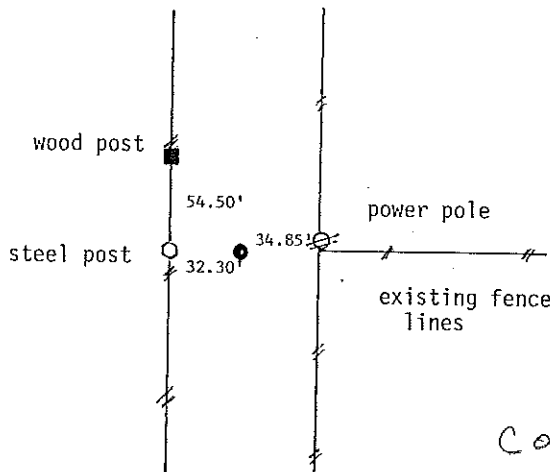
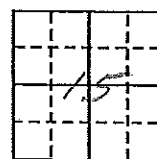
(book, page, document number, etc.)  
(Show reason for preparing this certificate, the evidence and detailed procedures used in establishing the corner positions and monumentation found or placed.)

Monument Description and Remarks: Found corner as listed below

*Section 15-95-13  
As referred to in  
Emyr. Tr. Book*

## PLAN - VIEW

(Show a minimum of three reference ties to durable physical objects, relevant monuments and physical conditions that will enable recovery of the corner.)



*Cor B  
15-95-13*

Northeast corner  
Found nail over spike

I hereby certify that the survey work was completed and this certificate was prepared by me or under my direct personal supervision and that I am a duly registered land surveyor under the laws of the state of Iowa.

Signature: Steve Busse  
Name typed or printed: Steve Busse  
Date: 2/25/92 Reg. No. 9018

Corners	List Corners to be Indexed		
	Section	Twp	Range
NE cor.	22	95	13

*Placed in Tr. Book  
3/6/92  
SPM*

