



Prepared by: Erdman Engineering, P.C., 708 Commerce Drive, P.O. Box 246, Decorah, Iowa, (563)382-4194

UNITED STATES PUBLIC LAND SURVEY CORNER CERTIFICATE
 OF

Land Survey Monuments situated in Section 16, Township 95 North, Range 13 West, of the Fifth Principal Meridian, Chickasaw County, Iowa, Previously recorded in does not apply in the County Recorder's Office.

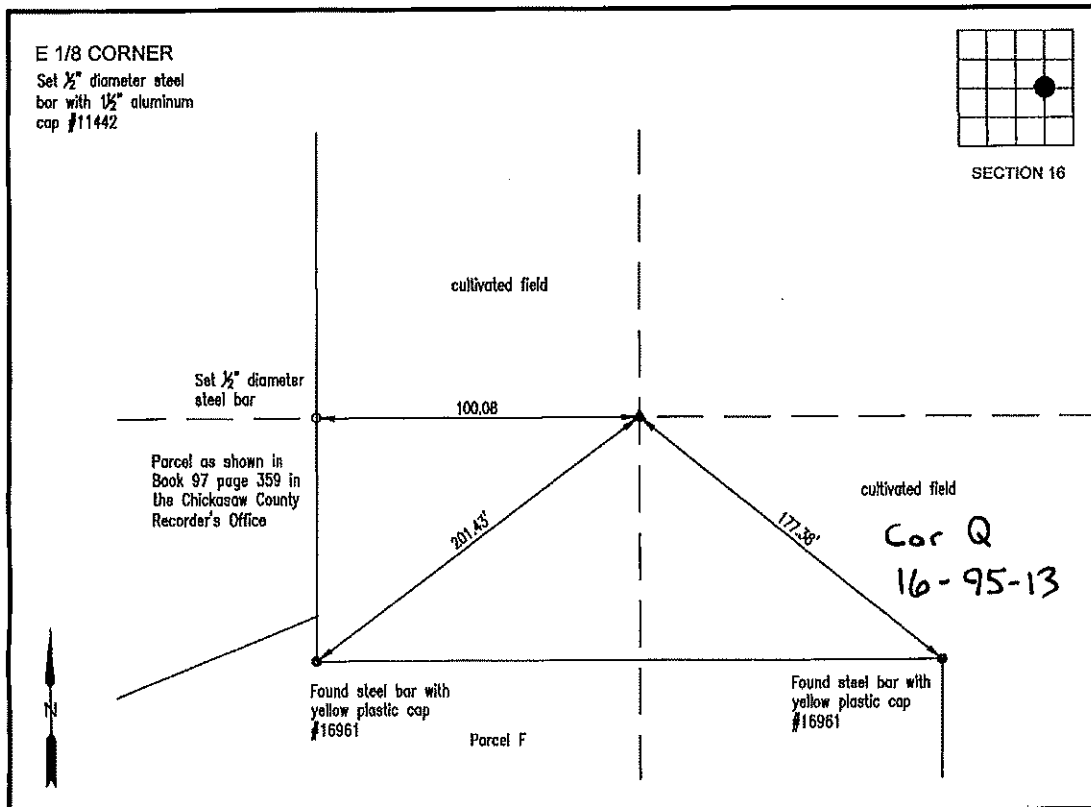
Monument Description and Remarks:

This certificate is prepared in accordance with Section 355.11 of the Code of Iowa. No previous certificates have been filed for these corner locations.

E 1/8 Corner: We found no record of the E 1/8 Corner being set. We found no evidence of a monument in the field other than an existing fence line running north and south. We found the E 1/4 Corner, W 1/4 Corner and the SSE 1/4 Corner. We set a 1/2" diameter steel bar with 1 1/2" aluminum cap #11442 on line between the E 1/4 Corner and the W 1/4 corner and on the extension of the line from the SSE 1/4 and the existing fence line running north and south as the E 1/8 Corner of Section 16, Township 95 North, Range 13 West. The monument location falls in a cultivated field. We set the top of the monument down ±1' below the existing ground.

PLAN-VIEW

(NOT TO SCALE)



I hereby certify that this land surveying document was prepared and the related survey work was performed by me or under my direct personal supervision and that I am a duly licensed Land Surveyor under the laws of the State of Iowa.



Lindsay Erdman 2/11/21
 Date
 Lindsay Erdman, P.E. & P.L.S.
 Licensed Professional Land Surveyor
 Iowa License Number 11442
 My License renewal date is December 31, 2022
 Pages or sheets covered by this seal: THIS SHEET ONLY

List Corner(s) to be Indexed

Corner(s)	Section	Township	Range
E 1/8	16	95N	13W

ERDMAN ENGINEERING, P.C.

CIVIL ENGINEERING & LAND SURVEYING
 Decorah, Iowa