

Herold - Reicks Surveying, 25 1/2 East Main Street, Suite 204, New Hampton, IA 50659, Ph. 641-394-2725

UNITED STATES PUBLIC LAND SURVEY CORNER CERTIFICATE

Land Survey Monuments situated in:

Section 16, Township 95 North, Range 13 West of the Fifth Principal Meridian,
Chickasaw County, Iowa. Previously recorded in 1.) Bk. 156, Pg. 238
 in County Recorder's Office. 2.) Doc. #2005-0857

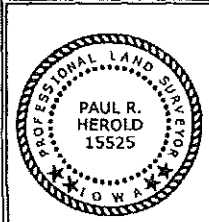
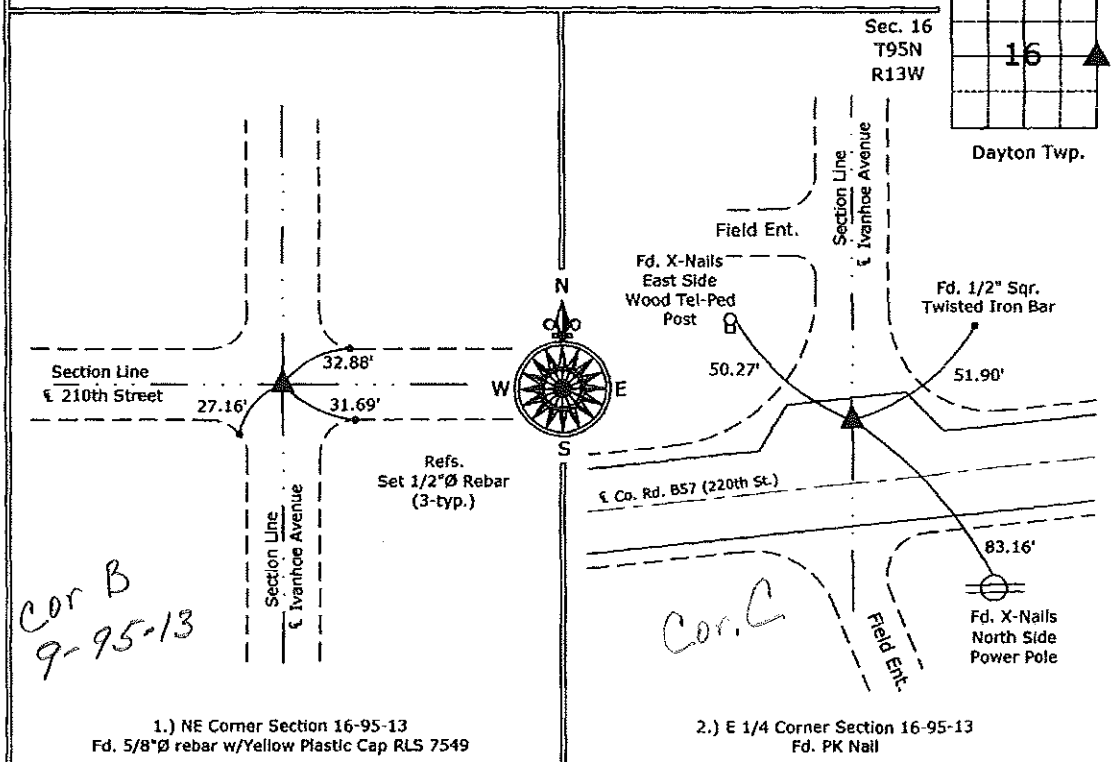
(Show reason for preparing this certificate, the evidence and detailed procedures used in establishing the corner positions and monumentation found or placed.)

Monument Description and Remarks:

- 1.) NE Corner Section 16-95-13: Fd. 5/8"Ø rebar w/Yellow Plastic Cap RLS 7549, all previous ties are missing.
- 2.) E 1/4 Corner Section 16-95-13: Fd. PK Nail, Corner was re-monumented by the County Engineer's Office after an H.M.A. overlay.

PLAN - VIEW

(Show a minimum of three reference ties to durable physical objects, relevant monuments and physical conditions that will enable recovery of the corner.)



I hereby certify that this land surveying document was prepared and the related survey work was performed by me or under my direct personal supervision and that I am a duly licensed Land Surveyor under the laws of the State of Iowa.
Paul R. Herold 2-29-08
 Paul R. Herold Date:
 License number 15525
 My license renewal date is December 31, 2008.
 Sheets covered by this seal: Individual sheet only

List Corners to be Indexed			
Corners	Section	Twp.	Range
NE	16	95	13
E 1/4	16	95	13

Project Number: 2008-016
 FB: Chickasaw County 1, Pg. 60

File: S:_Projects\2008-016.dwg, 2/29/2008 1:40:31 PM