

UNITED STATES PUBLIC LAND SURVEY CORNER CERTIFICATE

OF

Land Survey Monuments situated in Section 16, Township 95 North, Range 13 West, of the Fifth Principal Meridian, CHICKASAW County, Iowa. Previously recorded in NONE in County Recorder's Office.
(book, page, document number, etc.)

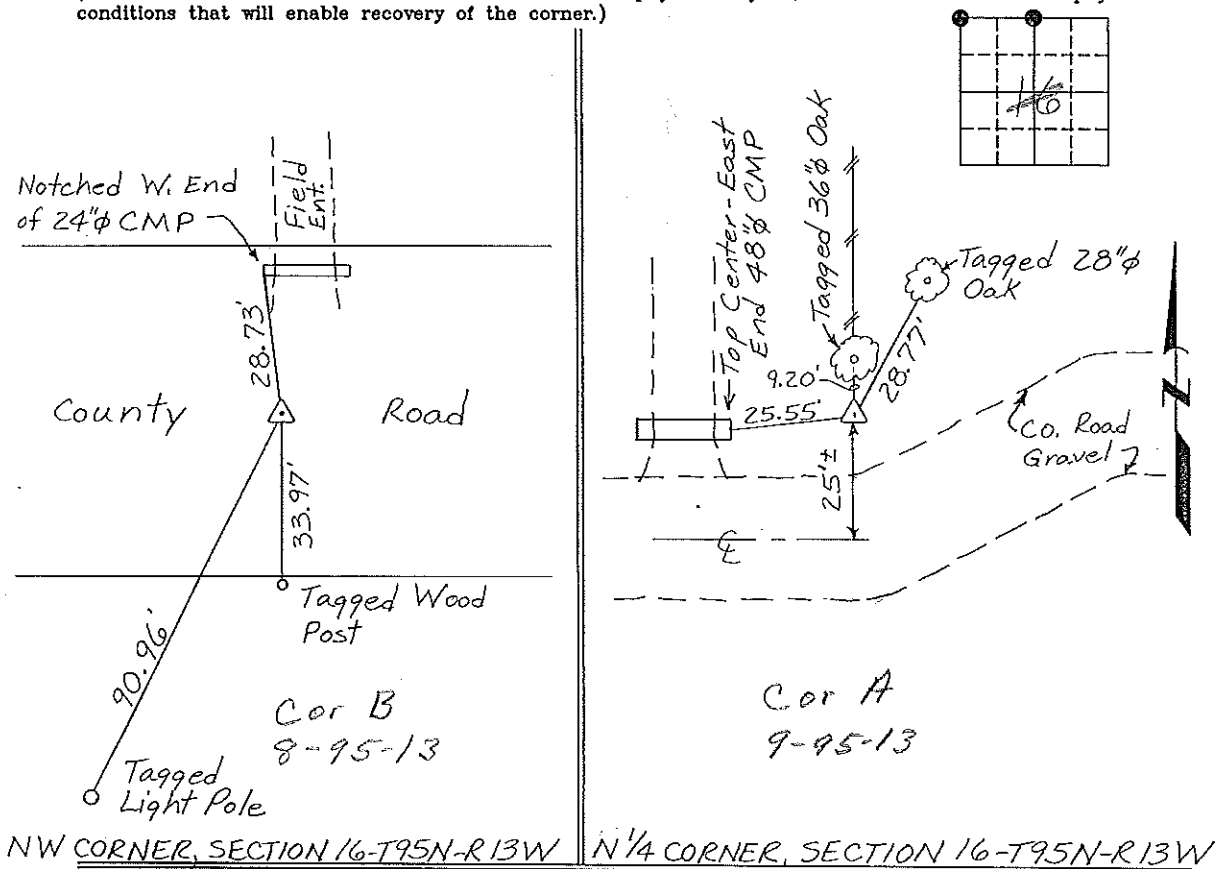
(Show reason for preparing this certificate, the evidence and detailed procedures used in establishing the corner positions and monumentation found or placed.)

Monument Description and Remarks: NW CORNER, SECTION 16-T95N-R13W: Found 3/4" Iron Pin.
N 1/4 CORNER, SECTION 16-T95N-R13W: Found 5/8" Rebar with cap #7549.

Section 8-95-13
As referred to in
Engr. Tie Book

PLAN - VIEW

(Show a minimum of three reference ties to durable physical objects, relevant monuments and physical conditions that will enable recovery of the corner.)



I hereby certify that the survey work was completed and this certificate was prepared by me or under my direct personal supervision and that I am a duly registered land surveyor under the laws of the state of Iowa.

Signature: Gary L. Casady
Gary L. Casady
Date: 11-16-94 Reg. No. 12532
My Registration Renewal Date is December 31, 1994

List Corners to be Indexed			
Corners	Section	Twp.	Range
NW	16	95N	13W
	Corner B	8-95-13	
N 1/4	16	95N	13W
	Corner A	9-95-13	

Seal



Placed in Tie Book
11/30/94