

Herold - Reicks Surveying, 25 1/2 East Main Street, Suite 204, New Hampton, IA 50659, Ph. 641-394-2725

UNITED STATES PUBLIC LAND SURVEY CORNER CERTIFICATE

Land Survey Monuments situated in:
 Section 16, Township 95 North, Range 13 West of the Fifth Principal Meridian,
Chickasaw County, Iowa. Previously recorded in 1.) Bk. 156, Pg. 238
 in County Recorder's Office. 2.) Doc. #2005-0857

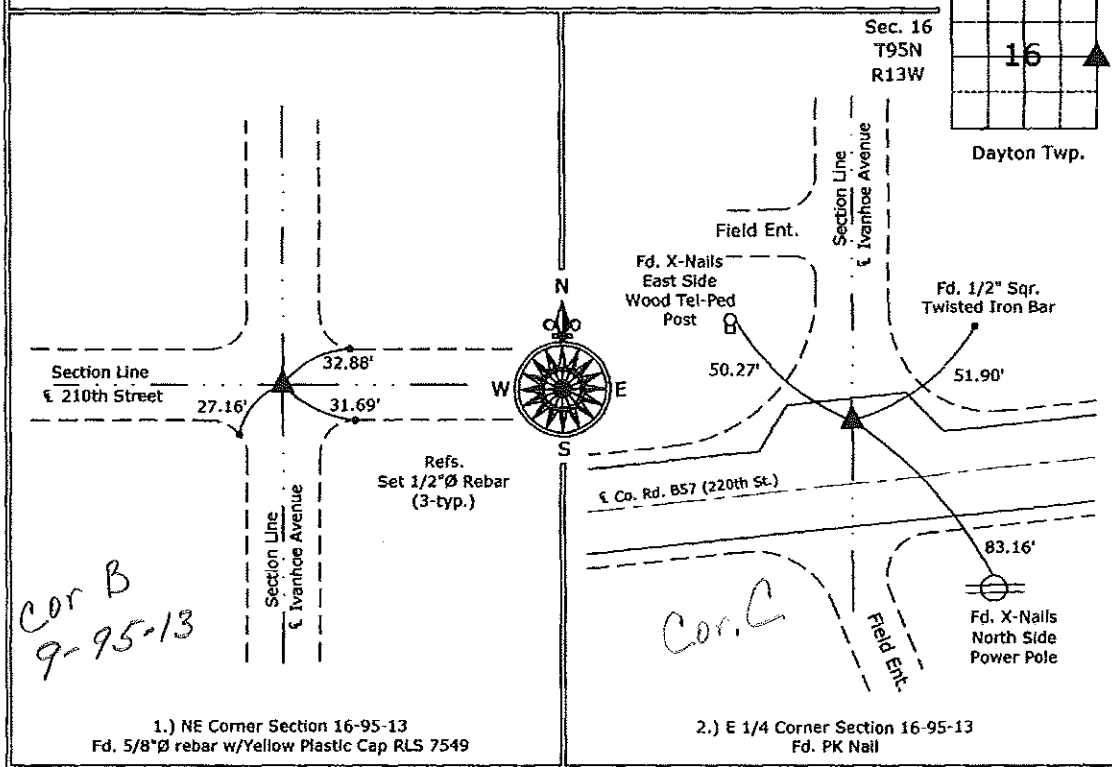
(Show reason for preparing this certificate, the evidence and detailed procedures used in establishing the corner positions and monumentation found or placed.)

Monument Description and Remarks:

- 1.) NE Corner Section 16-95-13: Fd. 5/8"Ø rebar w/Yellow Plastic Cap RLS 7549, all previous ties are missing.
- 2.) E 1/4 Corner Section 16-95-13: Fd. PK Nail, Corner was re-monumented by the County Engineer's Office after an H.M.A. overlay.

PLAN - VIEW

(Show a minimum of three reference ties to durable physical objects, relevant monuments and physical conditions that will enable recovery of the corner.)



1.) NE Corner Section 16-95-13
 Fd. 5/8"Ø rebar w/Yellow Plastic Cap RLS 7549

2.) E 1/4 Corner Section 16-95-13
 Fd. PK Nail



I hereby certify that this land surveying document was prepared and the related survey work was performed by me or under my direct personal supervision and that I am a duly licensed Land Surveyor under the laws of the State of Iowa.

Paul R. Herold 2-29-08
 Paul R. Herold Date:

License number 15525
 My license renewal date is December 31, 2008.
 Sheets covered by this seal: Individual sheet only

List Corners to be Indexed			
Corners	Section	Twp.	Range
NE	16	95	13
E 1/4	16	95	13

Project Number: 2008-016
 FB: Chickasaw County 1, Pg. 60

File: S:_Projects\2008-016.dwg, 2/29/2008 1:40:31 PM

UNITED STATES PUBLIC LAND SURVEY CORNER CERTIFICATE

OF

Land Survey Monuments situated in Section 16, Township 95 North, Range 13 West, of the Fifth Principal Meridian, CHICKASAW County, Iowa. Previously recorded in NONE in County Recorder's Office.
(book, page, document number, etc.)

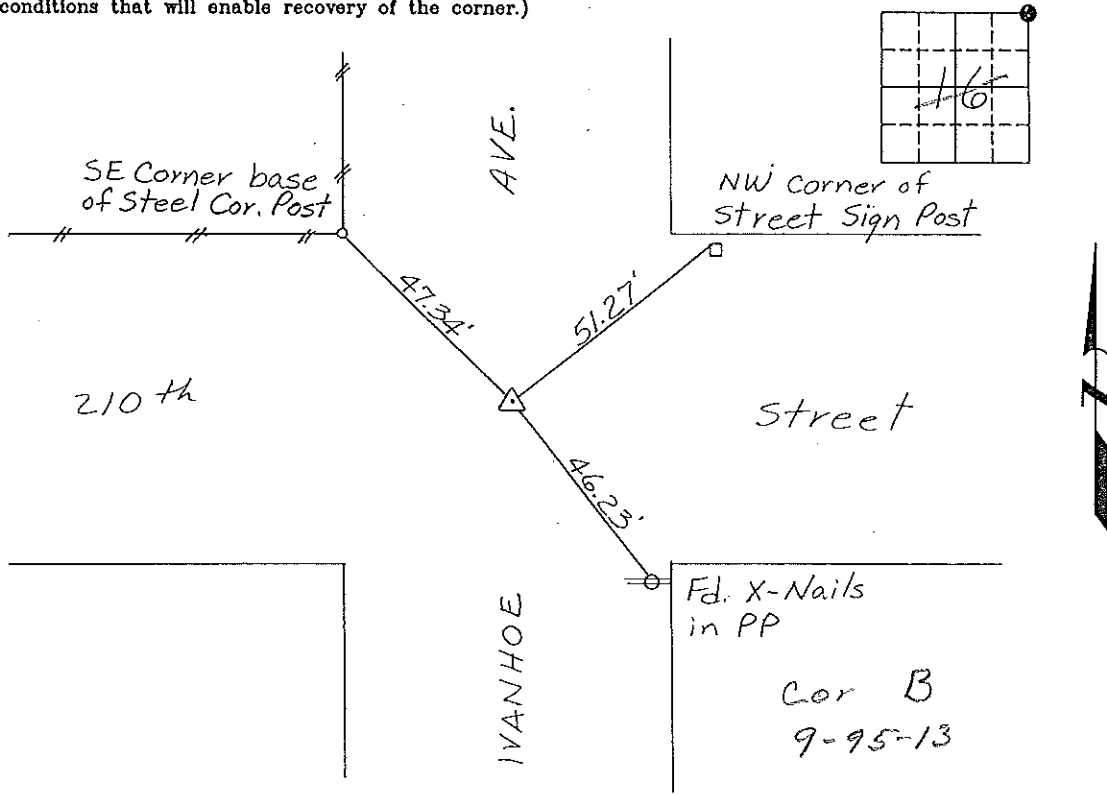
(Show reason for preparing this certificate, the evidence and detailed procedures used in establishing the corner positions and monumentation found or placed.)

Monument Description and Remarks: NE CORNER, SECTION 16-T95N-R13W:
Found 5/8" Rebar with cap #7549.

*Section 9-95-13
 As referred to in
 Engr. T.C. Book*

PLAN - VIEW

(Show a minimum of three reference ties to durable physical objects, relevant monuments and physical conditions that will enable recovery of the corner.)



I hereby certify that the survey work was completed and this certificate was prepared by me or under my direct personal supervision and that I am a duly registered land surveyor under the laws of the state of Iowa.

Signature: Gary L. Casady
 Gary L. Casady

Date: 11-16-94 Reg. No. 12532
 My Registration Renewal Date is December 31, 1994

Seal



List Corners to be Indexed			
Corners	Section	Twp.	Range
NE	16	95N	13W

*Corner B 9-95-13
 Placed in Tee
 Book 11/16/94*