

Prepared by & Return to: Herold - Reicks Surveying, 10 East Main Street, New Hampton, IA 50659, Ph. 641-394-2725

### UNITED STATES PUBLIC LAND SURVEY CORNER CERTIFICATE

Land Survey Monuments situated in Section **8**, Township **95** North, Range **13** West of the Fifth Principal Meridian, **Chickasaw** County, Iowa. 1.) Not previously recorded, 2.) Previously recorded in Bk. 156 , Pg. 237 in the County Recorder's office.

This certificate is being prepared in compliance with Iowa Code Chapter 355.11 because:



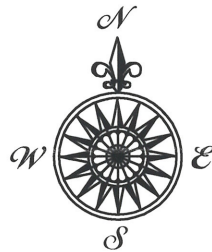
- 1  There is no certificate on file for this corner.
- 1 & 2  There are no longer three valid ties of record.
- 2  There are changes to reference ties of record.
- 1  There is change of monumentation of record.
- 2  To clarify description of record monument (ties).

Monument Description and Remarks:

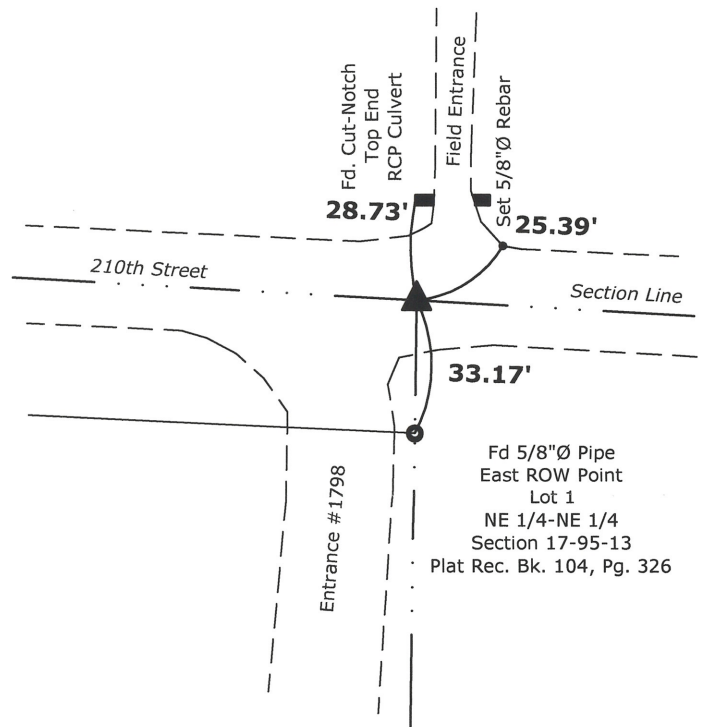
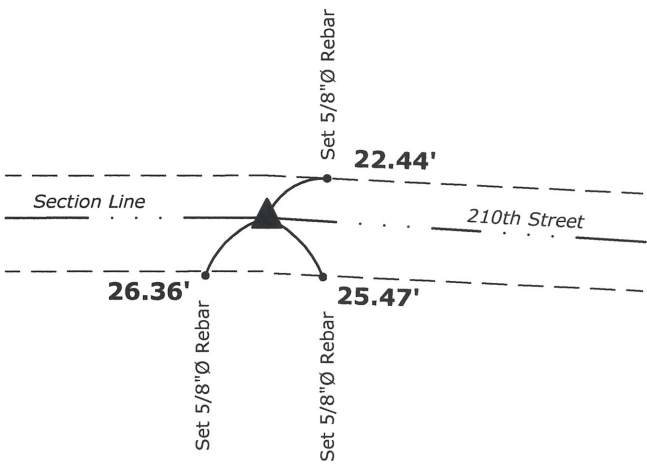
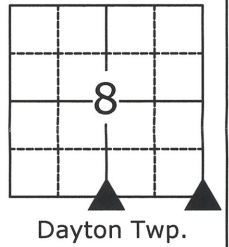
- 1.) S 1/4 Corner Section 8-95-13**, Fd. Granite Stone w/1" Square Iron Bar on East side, 24" deep  
Set 5/8"Ø rebar w/2"Ø aluminum cap PLS 15525 Over Stone, Corner recovered from information obtained from the County Engineer's Office in Field Book "Dayton Twp. Corner Ties", Corner "B" Section 8
- 2.) SE Corner Section 8-95-13**, Fd. 3/4"Ø Iron Pin from information on the previous Section Corner Certificate, 2 of the previous ties were missing, added 2 new ties in order to perpetuate the Corner Monument.

### PLAN - VIEW

(Show a minimum of three reference ties to durable physical objects, relevant monuments and physical conditions that will enable recovery of the corner.)



Sec. 8  
T95N  
R13W



**1.) S 1/4 Corner Section 8-95-13**

Fd. Granite Stone w/1" Square Iron Bar on East side, 24" deep  
Set 5/8"Ø rebar w/2"Ø aluminum cap PLS 15525 Over Stone

**2.) SE Corner Section 8-95-13**

Fd. 3/4"Ø Iron Pin



I hereby certify that this land surveying document was prepared and the related survey work was performed by me or under my direct personal supervision and that I am a duly licensed Land Surveyor under the laws of the State of Iowa.

*Paul R. Herold* 8-12-15

Paul R. Herold Date:

License number 15525

My license renewal date is December 31, 2016.

Sheets covered by this seal: Individual sheet only

List Corners to be Indexed

Corners	Section	Twp.	Range
S 1/4	8	95	13
SE	8	95	13

Project Number: 2015-111

FB: Chickasaw County 6, Pgs. 75-76

UNITED STATES PUBLIC LAND SURVEY CORNER CERTIFICATE

OF

Land Survey Monuments situated in Section 16, Township 95 North, Range 13 West, of the Fifth Principal Meridian, CHICKASAW County, Iowa. Previously recorded in NONE in County Recorder's Office.  
(book, page, document number, etc.)

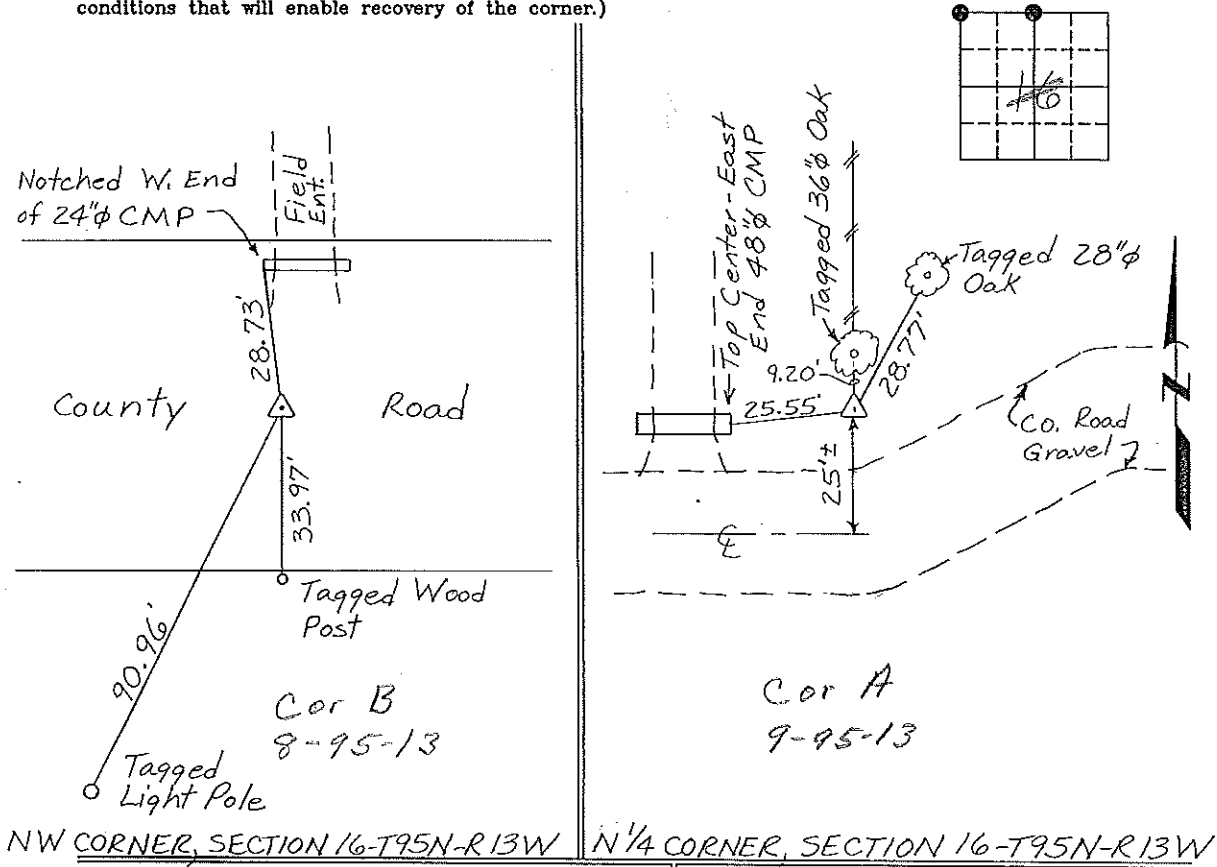
(Show reason for preparing this certificate, the evidence and detailed procedures used in establishing the corner positions and monumentation found or placed.)

Monument Description and Remarks: NW CORNER, SECTION 16-T95N-R13W: Found 3/4" Iron Pin.  
N 1/4 CORNER, SECTION 16-T95N-R13W: Found 5/8" Rebar with cap #7549.

Section 8-95-13  
As referred to in  
Engr. Tie Book

PLAN - VIEW

(Show a minimum of three reference ties to durable physical objects, relevant monuments and physical conditions that will enable recovery of the corner.)



I hereby certify that the survey work was completed and this certificate was prepared by me or under my direct personal supervision and that I am a duly registered land surveyor under the laws of the state of Iowa.

Signature: Gary L. Casady  
Gary L. Casady  
Date: 11-16-94 Reg. No. 12532  
My Registration Renewal Date is December 31, 1994

List Corners to be Indexed			
Corners	Section	Twp.	Range
NW	16	95N	13W
	Corner B	8-95-13	
N 1/4	16	95N	13W
	Corner A	9-95-13	

Seal



Placed in Tie Book  
11/30/94