

UNITED STATES PUBLIC LAND SURVEY CORNER CERTIFICATE

OF

Land Survey Monuments situated in Section 18, Township 95 North, Range 13 West, of the Fifth Principal Meridian, CHICKASAW County, Iowa. Previously recorded in none in County Recorder's Office.  
(book, page, document number, etc.)

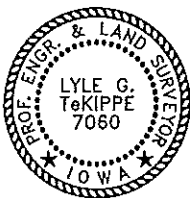
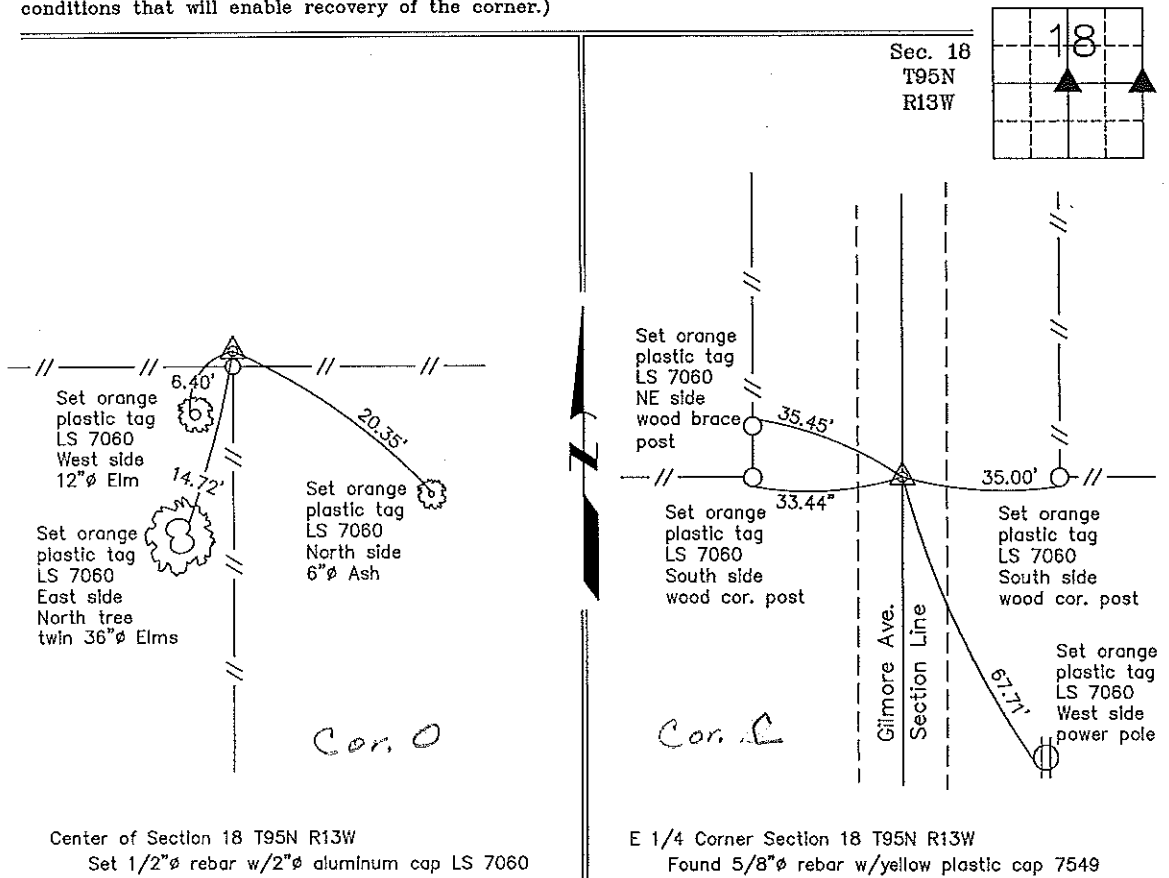
(Show reason for preparing this certificate, the evidence and detailed procedures used in establishing the corner positions and monumentation found or placed.)

Monument Description and Remarks: Center of Section 18 T95N R13W: Set 1/2"Ø rebar w/2"Ø aluminum cap LS 7060 at the record distance from the E 1/4 Corner on the line of the quarter-section line fence to the west. This position matches the fence corner and the line fence to the south.

E 1/4 Corner Section 18 T95N R13W: Found 5/8"Ø rebar w/yellow plastic cap 7549 with information obtained from the Chickasaw County Engineer's Office in the Field Book "Dayton Twp. Corner Ties", Section 18, Corner 'C'.

PLAN - VIEW

(Show a minimum of three reference ties to durable physical objects, relevant monuments and physical conditions that will enable recovery of the corner.)



I hereby certify that this land surveying document was prepared and the related survey work was performed by me or under my direct personal supervision and that I am a duly licensed Land Surveyor under the laws of the State of Iowa.

*Lyle G. TeKippe* 5-25-99  
Lyle G. TeKippe Date  
License number 7080  
My license renewal date is December 31, 2000.  
Sheets covered by this seal: Individual

List Corners to be Indexed			
Corners	Section	Twp.	Range
Center	18	95N	13W
Corner O	18	95N	13W
E 1/4	18	95N	13W
Corner C	18	95N	13W

*Placed in Tie Book*

171-470

"County Engineer's Copy"

5/26/99