

TEKIPPE ENGINEERING, P.C., 128 South Vine Street, West Union, Iowa 52175 Phone (563) 422-5131

UNITED STATES PUBLIC LAND SURVEY CORNER CERTIFICATE

OF

Land Survey Monuments situated in Section 18, Township 95 North, Range 13 West of the Fifth Principal Meridian, CHICKASAW County, Iowa. Previously recorded in none in County Recorder's Office.
(book, page, document number, etc.)

(Show reason for preparing this certificate, the evidence and detailed procedures used in establishing the corner positions and monumentation found or placed.)

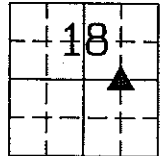
Monument Description and Remarks: SE Corner SW 1/4 - NE 1/4 Section 18 T95N R13W:
Set 1/2" ϕ rebar w/2" ϕ aluminum cap PLS 15525 equidistant and on line between the E 1/4 Corner and the Center of the Section.

PLAN - VIEW

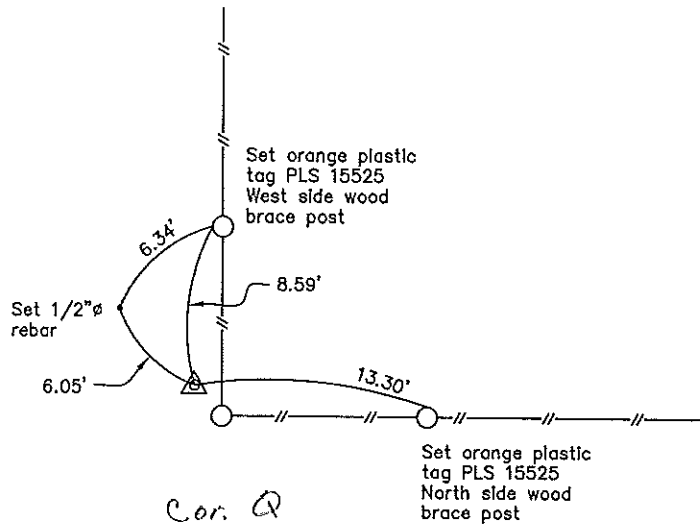
Project Number 01184.LS
 FR. 48H PG. 59-61

(Show a minimum of three reference ties to durable physical objects, relevant monuments and physical conditions that will enable recovery of the corner.)

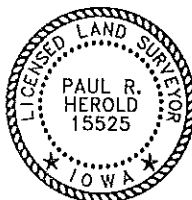
Sec. 18
 T95N
 R13W



Dayton Twp.



SE Corner SW 1/4 - NE 1/4 Section 18 T95N R13W
 Set 1/2" ϕ rebar w/2" ϕ aluminum cap PLS 15525



I hereby certify that this land surveying document was prepared and the related survey work was performed by me or under my direct personal supervision and that I am a duly licensed Land Surveyor under the laws of the State of Iowa.
Paul R. Herold 11-5-01
 Paul R. Herold Date
 License number 15525
 My license renewal date is December 31, 2002.
 Sheets covered by this seal: Individual

List Corners to be Indexed			
Corners	Section	Twp.	Range
SE-SW-NE	18	95N	13W

Filed 11-14-01

County Engineer's
Mark