

Prepared by & Return to Harold - Reicks Surveying, 10 East Main Street, New Hampton, IA 50658, Ph. 641-394-2725

UNITED STATES PUBLIC LAND SURVEY CORNER CERTIFICATE

Land Survey Monuments situated in Section ¹² 18, Township 95 North, Range 13 West of the Fifth Principal Meridian, Chickasaw County, Iowa. 1., 2.) Not previously recorded in the County Recorder's office.

This certificate is being prepared in compliance with Iowa Code Chapter 355.11 because:

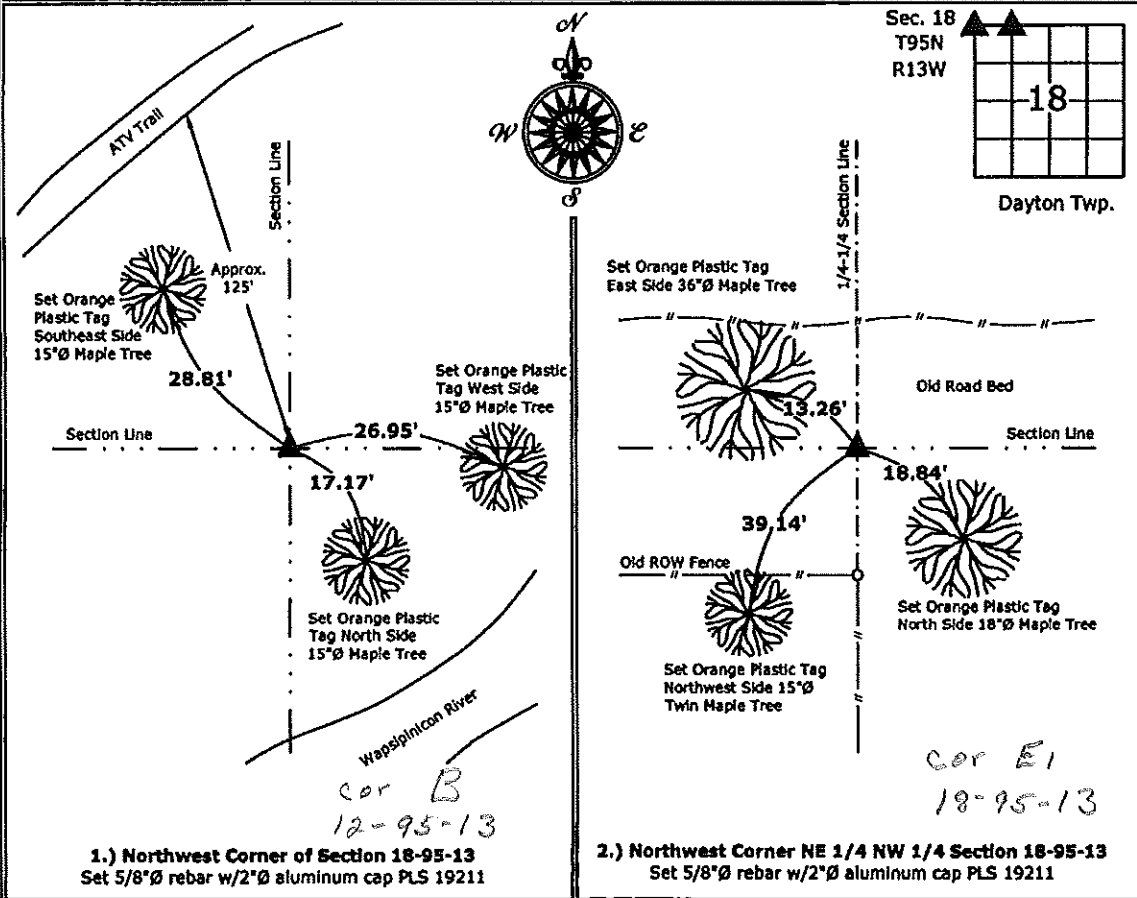
- 1 & 2 There is no certificate on file for this corner.
 There are no longer three valid ties of record.
 There are changes to reference ties of record.
 There is change of monumentation of record.
 To clarify description of record monument (ties).

Monument Description and Remarks:

- Northwest Corner:** Set 5/8"Ø rebar w/2"Ø aluminum cap PLS 19211 at the Intersection of a line from the North 1/4 through the Northwest Corner NE 1/4-NW 1/4 and a line from the Southwest Corner through the West 1/4 Corner of Section 18 and through a possession Line fence running North and South Approximately 300' South of the NW Corner.
- Northwest Corner NE 1/4-NW 1/4:** Did not locate Stone per Survey and Plat made by G.W. Cotan on August 16, 1904. Set 5/8"Ø rebar with 2"Ø aluminum Cap PLS 19211 by Single Proportionate method on line between the NW and North Quarter Corners. Position matches the possession line fence to the South.

PLAN - VIEW

(Show a minimum of three reference ties to durable physical objects, relevant monuments and physical conditions that will enable recovery of the corner.)



1.) Northwest Corner of Section 18-95-13
 Set 5/8"Ø rebar w/2"Ø aluminum cap PLS 19211

2.) Northwest Corner NE 1/4 NW 1/4 Section 18-95-13
 Set 5/8"Ø rebar w/2"Ø aluminum cap PLS 19211



I hereby certify that this land surveying document was prepared and the related survey work was performed by me or under my direct personal supervision and that I am a duly licensed Land Surveyor under the laws of the State of Iowa.

Kirk D. Reicks 11-30-12
 Kirk D. Reicks Date:

License number 19211
 My license renewal date is December 31, 2012.
 Sheets covered by this seal: Individual sheet only

List Corners to be Indexed			
Corners	Section	Twp.	Range
NW	18	95	13
NW-NE-NW	18	95	13

Project Number: 2012-167
 FB: Chickasaw County 4, Pgs. 65-67

Prepared by & Return to Harold - Reicks Surveying, 19 East Main Street, New Hampton, IA 50658, Ph. 641-394-2725

UNITED STATES PUBLIC LAND SURVEY CORNER CERTIFICATE

12

Land Survey Monuments situated in Section 18, Township 94 North, Range 12 West of the Fifth Principal Meridian, Chickasaw County, Iowa. 1., 2.) Previously recorded in Bk. 151, Pg. 181 in the County Recorder's office.

This certificate is being prepared in compliance with Iowa Code Chapter 355.11 because:

Monument Description and Remarks:

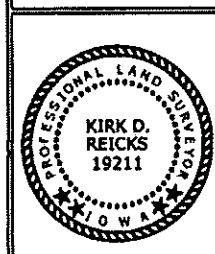
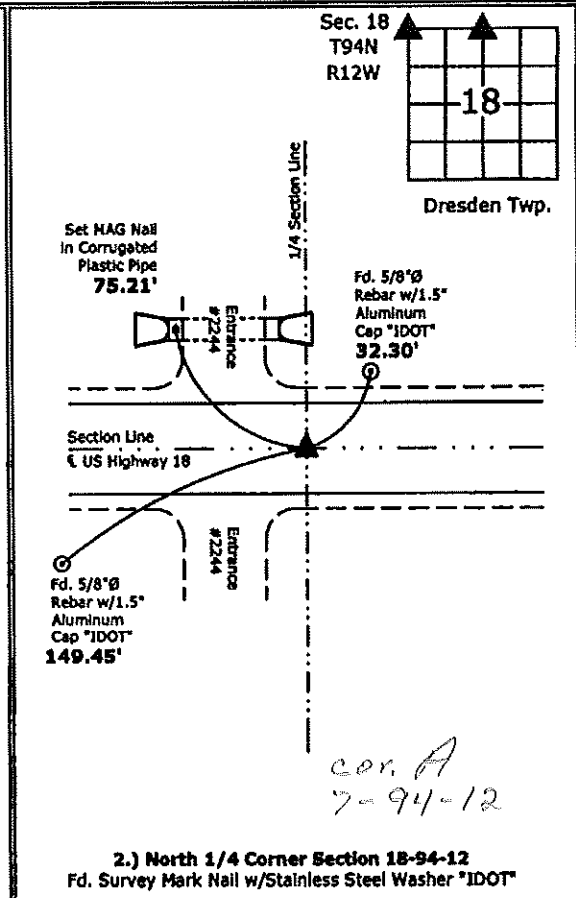
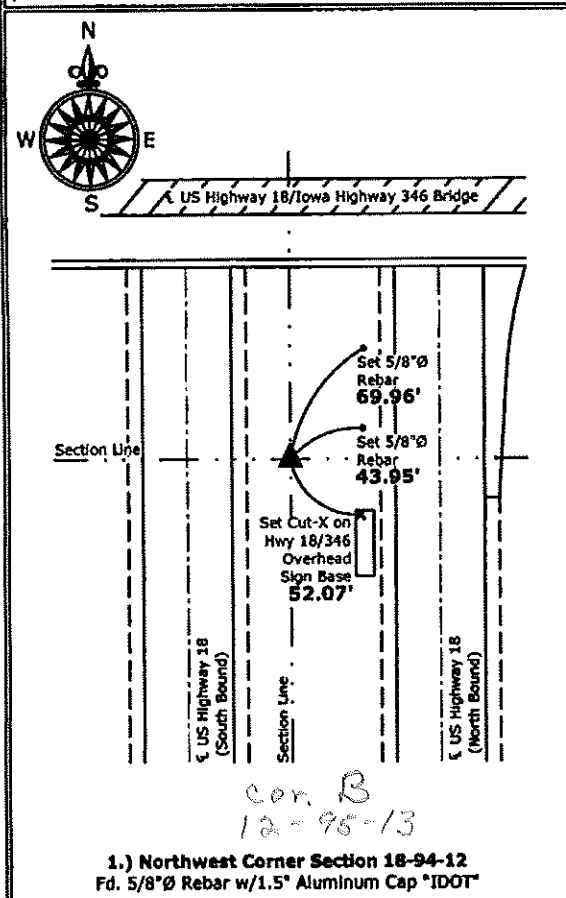
1 & 2 There is no certificate on file for this corner.
 There are no longer three valid ties of record.
 There are changes to reference ties of record.
 There is change of monumentation of record.
 To clarify description of record monument (ties).

1.) Northwest Corner: Found 5/8"Ø Rebar w/1.5" Aluminum Cap "IDOT" with information obtained from the IDOT Resident Construction Engineer's office, New Hampton, Iowa and with information obtained from the previous Section Corner Certificate, all previous ties were missing, set new ties to update corner.

2.) North 1/4 Corner: Found Survey Mark Nail w/Stainless Steel Washer "IDOT" with information obtained from the IDOT Resident Construction Engineer's office, New Hampton, Iowa and with information obtained from the previous Section Corner Certificate, all previous ties were missing, set new ties to update corner.

PLAN - VIEW

(Show a minimum of three reference ties to durable physical objects, relevant monuments and physical conditions that will enable recovery of the corner.)



I hereby certify that this land surveying document was prepared and the related survey work was performed by me or under my direct personal supervision and that I am a duly licensed Land Surveyor under the laws of the State of Iowa.

Kirk D. Reicks 3-20-12
 Kirk D. Reicks Date:

License number 19211
 My license renewal date is December 31, 2012.
 Sheets covered by this seal: Individual sheet only

List Corners to be Indexed			
Corners	Section	Twp.	Range
NW	18	94	12
N 1/4	18	94	12

Project Number: 2012-024
 FB: Chickasaw County 4, Pgs. 33

Section 12-95-13
A's referred to in
Engr. Tie Book

UNITED STATES PUBLIC LAND SURVEY CORNER CERTIFICATE

OF

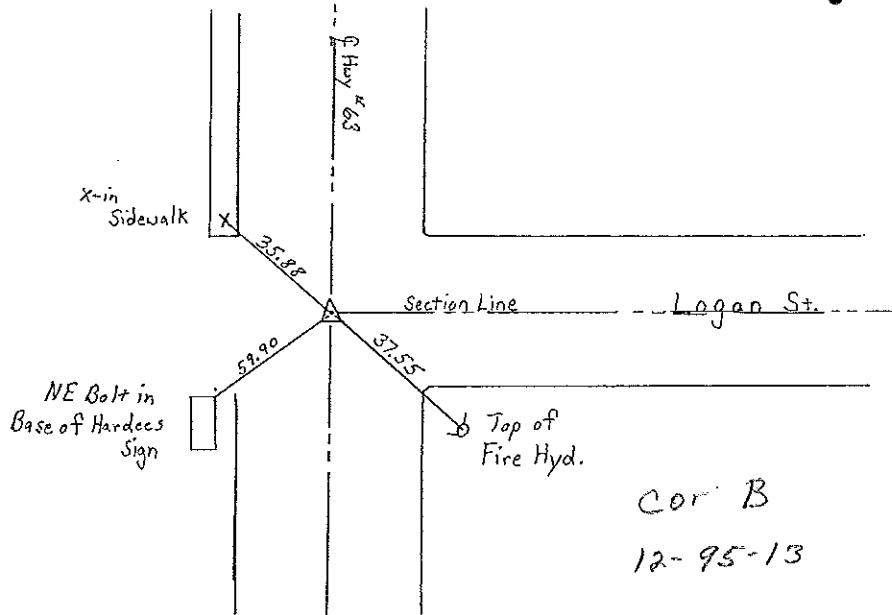
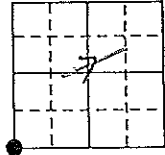
Land Survey Monuments situated in Section 7 12, Township 95 N, Range 12 W 13, of the Fifth Principal Meridian, Chickasaw County, Iowa. Previously recorded in (NONE) in County Recorder's Office.

(Show reason for preparing this certificate, the evidence and detailed procedures used in establishing the corner positions and monumentation found or placed.)

Monument Description and Remarks: SW Corner Sec. 7-95-12. Corner on Manhole lid, temp. marked with keel, on approximate center line of Highway #63.

PLAN - VIEW

(Show a minimum of three reference ties to durable physical objects, relevant monuments and physical conditions that will enable recovery of the corner.)



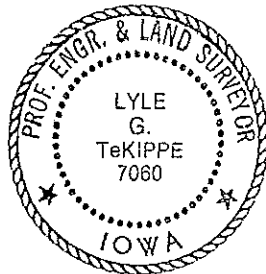
Cor B
12-95-13

SW Corner Section 7-95-12

I hereby certify that the survey work was completed and this certificate was prepared by me or under my direct personal supervision and that I am a duly registered land surveyor under the laws of the state of Iowa.

Signature: Lyle G. TeKippe
Name typed or printed: Lyle G. TeKippe
Date: 10-15-91 Reg. No. 7060

Corners	Section	Twp	Range
SW	7	95N	12W



SEAL

Cor B
Section 12
Dedim Top
Placed in to corner
10/16/91