

Prepared by & Return to Harold - Reicks Surveying, 10 East Main Street, New Hampton, IA 50658, Ph. 641-394-2725

**UNITED STATES PUBLIC LAND SURVEY CORNER CERTIFICATE**

Land Survey Monuments situated in Section <sup>12</sup> 18, Township 95 North, Range 13 West of the Fifth Principal Meridian, Chickasaw County, Iowa. 1., 2.) Not previously recorded in the County Recorder's office.

This certificate is being prepared in compliance with Iowa Code Chapter 355.11 because:

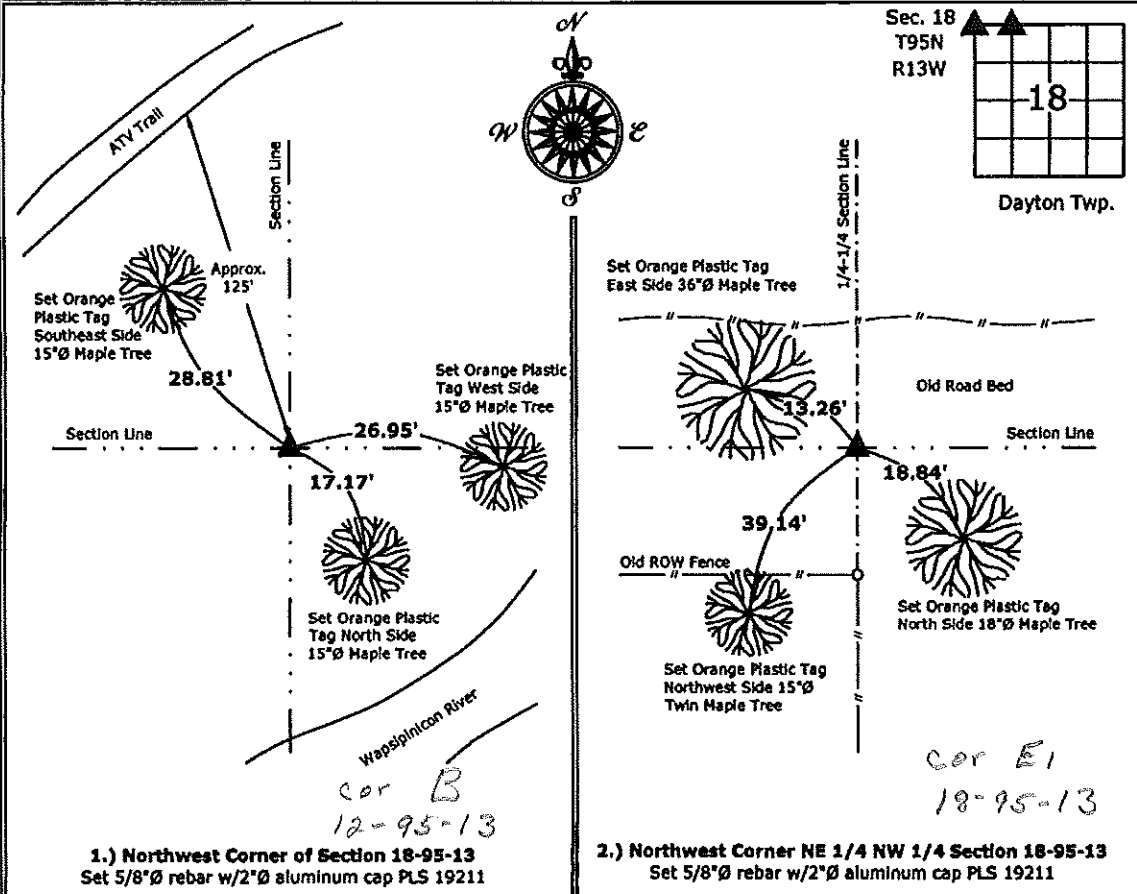
- 1 & 2  There is no certificate on file for this corner.  
 There are no longer three valid ties of record.  
 There are changes to reference ties of record.  
 There is change of monumentation of record.  
 To clarify description of record monument (ties).

Monument Description and Remarks:

- Northwest Corner:** Set 5/8"Ø rebar w/2"Ø aluminum cap PLS 19211 at the intersection of a line from the North 1/4 through the Northwest Corner NE 1/4-NW 1/4 and a line from the Southwest Corner through the West 1/4 Corner of Section 18 and through a possession Line fence running North and South Approximately 300' South of the NW Corner.
- Northwest Corner NE 1/4-NW 1/4:** Did not locate Stone per Survey and Plat made by G.W. Cotan on August 16, 1904. Set 5/8"Ø rebar with 2"Ø aluminum Cap PLS 19211 by Single Proportionate method on line between the NW and North Quarter Corners. Position matches the possession line fence to the South.

**PLAN - VIEW**

(Show a minimum of three reference ties to durable physical objects, relevant monuments and physical conditions that will enable recovery of the corner.)



1.) Northwest Corner of Section 18-95-13  
 Set 5/8"Ø rebar w/2"Ø aluminum cap PLS 19211

2.) Northwest Corner NE 1/4 NW 1/4 Section 18-95-13  
 Set 5/8"Ø rebar w/2"Ø aluminum cap PLS 19211



I hereby certify that this land surveying document was prepared and the related survey work was performed by me or under my direct personal supervision and that I am a duly licensed Land Surveyor under the laws of the State of Iowa.

*Kirk D. Reicks* 11-30-12  
 Kirk D. Reicks Date:

License number 19211  
 My license renewal date is December 31, 2012.  
 Sheets covered by this seal: Individual sheet only

List Corners to be Indexed			
Corners	Section	Twp.	Range
NW	18	95	13
NW-NE-NW	18	95	13

Project Number: 2012-167  
 FB: Chickasaw County 4, Pgs. 65-67