

Prepared by & Return to Harold - Reicks Surveying, 10 East Main Street, New Hampton, IA 56658, Ph. 641-294-2725

UNITED STATES PUBLIC LAND SURVEY CORNER CERTIFICATE

12

Land Survey Monuments situated in Section 18, Township 94 North, Range 12 West of the Fifth Principal Meridian, Chickasaw County, Iowa. 1., 2.) Previously recorded in Bk. 151, Pg. 181 in the County Recorder's office.

This certificate is being prepared in compliance with Iowa Code Chapter 355.11 because:

Monument Description and Remarks:

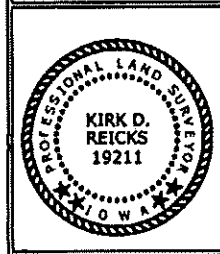
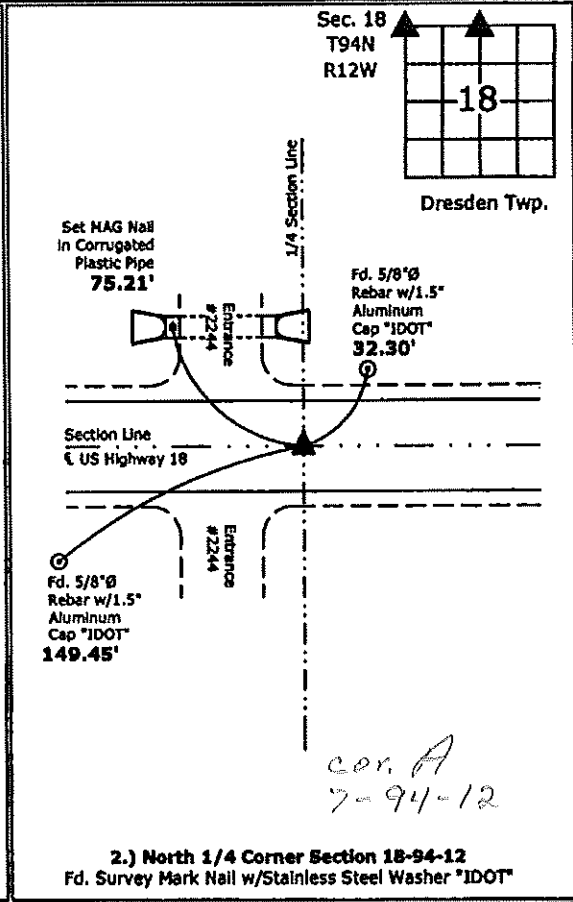
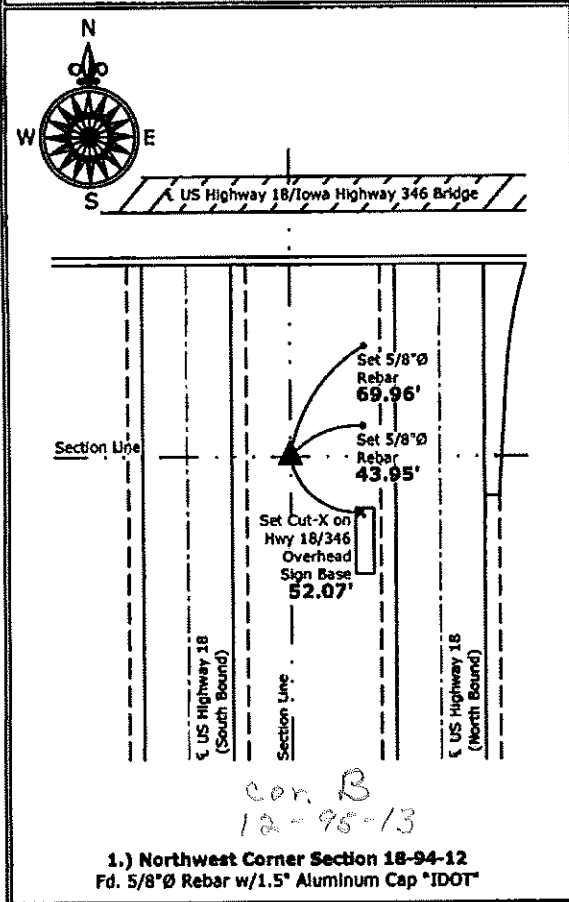
1 & 2 There is no certificate on file for this corner.
 There are no longer three valid ties of record.
 There are changes to reference ties of record.
 There is change of monumentation of record.
 To clarify description of record monument (ties).

1.) **Northwest Corner:** Found 5/8"Ø Rebar w/1.5" Aluminum Cap "IDOT" with information obtained from the IDOT Resident Construction Engineer's office, New Hampton, Iowa and with information obtained from the previous Section Corner Certificate, all previous ties were missing, set new ties to update corner.

2.) **North 1/4 Corner:** Found Survey Mark Nail w/Stainless Steel Washer "IDOT" with information obtained from the IDOT Resident Construction Engineer's office, New Hampton, Iowa and with information obtained from the previous Section Corner Certificate, all previous ties were missing, set new ties to update corner.

PLAN - VIEW

(Show a minimum of three reference ties to durable physical objects, relevant monuments and physical conditions that will enable recovery of the corner.)



I hereby certify that this land surveying document was prepared and the related survey work was performed by me or under my direct personal supervision and that I am a duly licensed Land Surveyor under the laws of the State of Iowa.

Kirk D. Reicks 3-20-12
 Kirk D. Reicks Date:

License number 19211
 My license renewal date is December 31, 2012.
 Sheets covered by this seal: Individual sheet only

List Corners to be Indexed			
Corners	Section	Twp.	Range
NW	18	94	12
N 1/4	18	94	12

Project Number: 2012-024
 FB: Chickasaw County 4, Pgs. 33

Section 7-95-13
As referred to in
Engr. Tie Book

FILED 2001-2441
RECORDER'S OFFICE
CHICKASAW COUNTY, IOWA
2001 NOV 7 AM 9 21
CINDY MESSERSMITH
COUNTY RECORDER

TeKIPPE ENGINEERING, P.C., 128 South Vine Street, West Union, Iowa 52175 Phone (563) 422-5131

UNITED STATES PUBLIC LAND SURVEY CORNER CERTIFICATE

OF

Land Survey Monuments situated in Section 18, Township 95 North, Range 13 West of the Fifth Principal Meridian, CHICKASAW County, Iowa.
Previously recorded in none in County Recorder's Office.
(book, page, document number, etc.)

(Show reason for preparing this certificate, the evidence and detailed procedures used in establishing the corner positions and monumentation found or placed.)

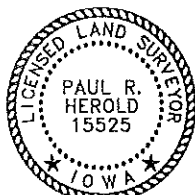
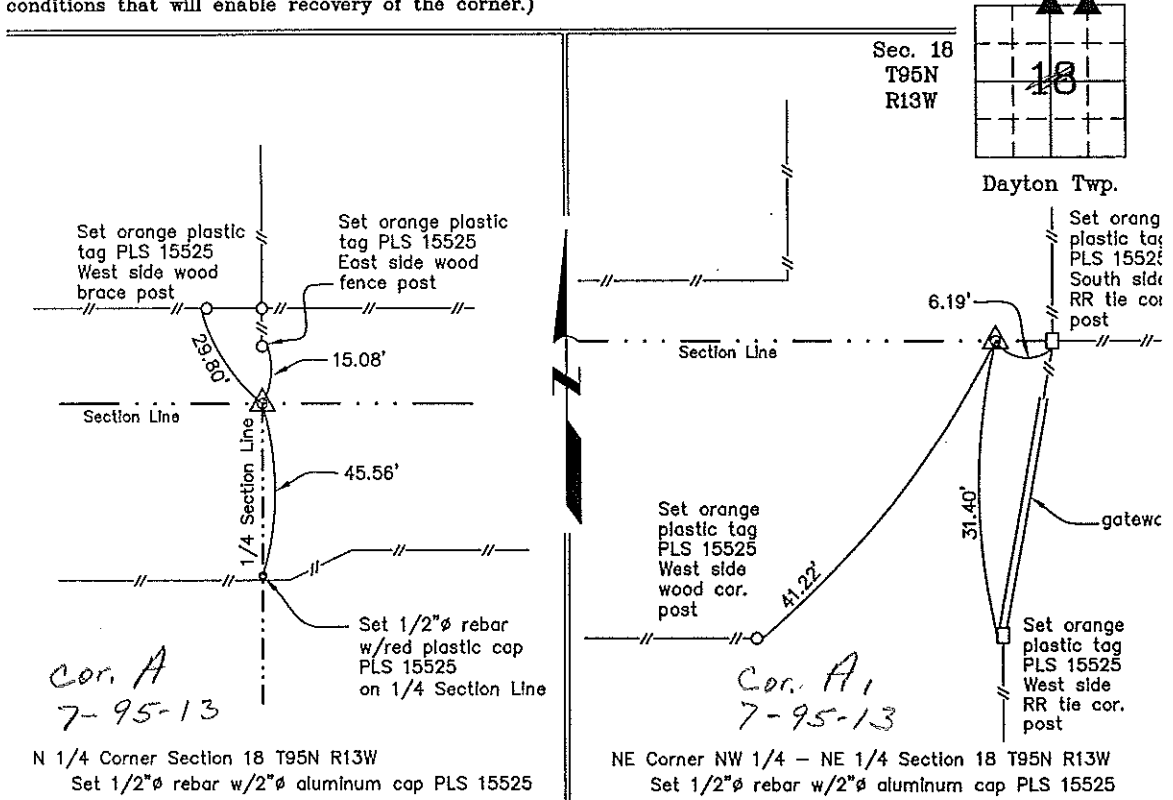
Monument Description and Remarks: N 1/4 Corner Section 18 T95N R13W: Set 1/2"Ø rebar w/2"Ø aluminum cap PLS 15525 on the extension of a Section Line fence at the record distance from the NE Corner which matches the fence line to the North.

NE Corner NW 1/4 - NE 1/4 Section 18 T95N R13W: Set 1/2"Ø rebar w/2"Ø aluminum cap PLS 15525 on the extension of a Section Line fence at the record distance from the NE Corner which matches the fence line to the South.

PLAN - VIEW

Project Number 01194.13
FR 48H PG. 59-61

(Show a minimum of three reference ties to durable physical objects, relevant monuments and physical conditions that will enable recovery of the corner.)



I hereby certify that this land surveying document was prepared and the related survey work was performed by me or under my direct personal supervision and that I am a duly licensed Land Surveyor under the laws of the State of Iowa.

Paul R. Herold 11-5-01
Paul R. Herold Date
License number 15525
My license renewal date is December 31, 2002.
Sheets covered by this seal: Individual

List Corners to be Indexed			
Corners	Section	Twp.	Range
N 1/4	18	95N	13W
NE-NW-NE	18	95N	13W

Filed 11-14-01

County Engineers
Cindy Messersmith