

Chickasaw Co. Recorder  
 Cindy Messersmith  
**Fee Book 2016-1630**  
 11/30/2016 @12:49PM  
 SEC COR CERT  
 Book: Page: # Pages: 1  
 Total Fees: \$7.00

Prepared by & Return to: Herold - Reicks Surveying, 10 East Main Street, New Hampton, IA 50659, Ph. 641-394-3725

### United States Public Land Survey Corner Certificate

Land Survey Monument situated in  
 Section 19, Township 95 North, Range 13 West of the Fifth Principal Meridian, Chickasaw County, Iowa.  
 Not on file in the County Recorder's office.

This certificate is being prepared in compliance with Iowa Code Chapter 355.11 because:

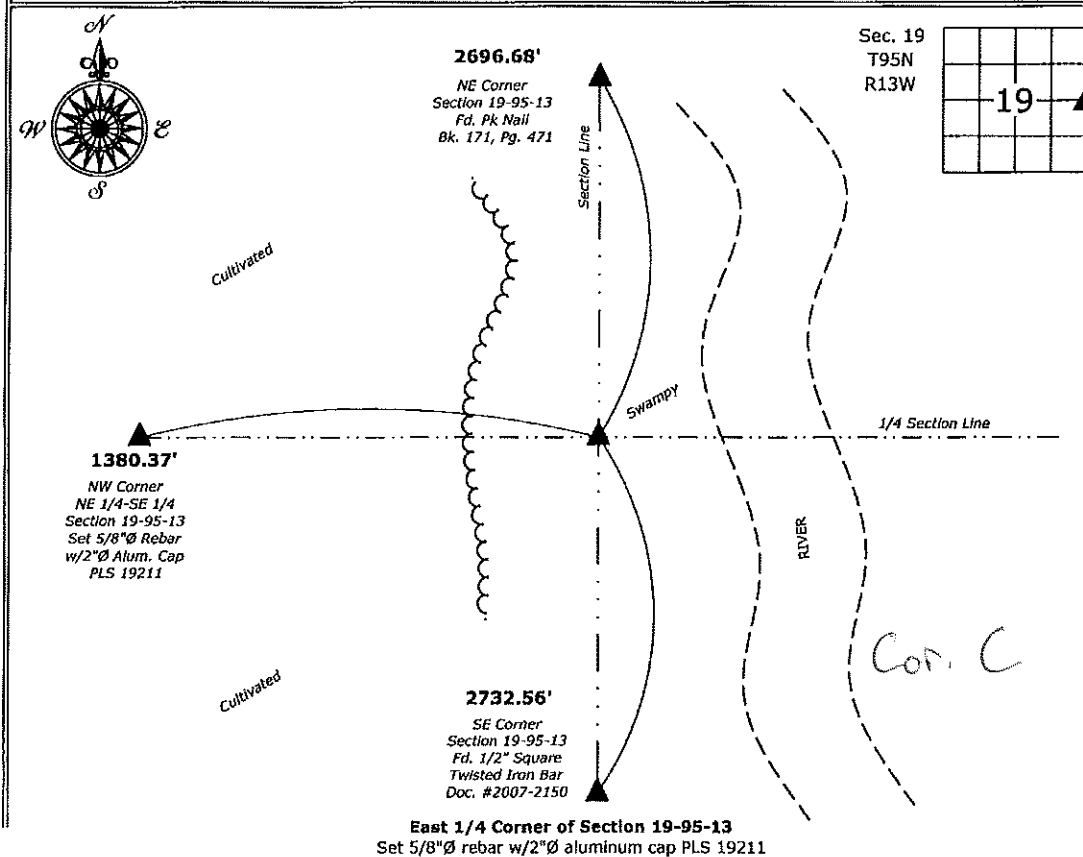
- There is no certificate on file for this corner.
- There are no longer three valid ties of record.
- There are changes to reference ties of record.
- There is change of monumentation of record.
- To clarify description of record monument (ties).

#### Monument Description and Remarks:

**East 1/4 Corner:** Set 5/8"Ø rebar w/2"Ø aluminum cap PLS 19211 double the distance from the Center to and across the Northwest Corner of the NE 1/4 - SE 1/4, both of said Section, after comparing the position's location relative to other adjacent Corners.

#### Plan View

(Show a minimum of three reference ties to durable physical objects, relevant monuments and physical conditions that will enable recovery of the corner.)



**East 1/4 Corner of Section 19-95-13**  
 Set 5/8"Ø rebar w/2"Ø aluminum cap PLS 19211



I hereby certify that this land surveying document was prepared and the related survey work was performed by me or under my direct personal supervision and that I am a duly licensed Land Surveyor under the laws of the State of Iowa.  
*Kirk D. Reicks 11-30-16*  
 Kirk D. Reicks Date:  
 License number 19211  
 My license renewal date is December 31, 2016.  
 Sheets covered by this seal: Individual sheet only

List Corner to be Indexed			
Corner	Section	Twp.	Range
E 1/4	19	95	13

Project Number: 2016-117  
 FB: Chickasaw 8, Pgs. 13-14

File: S:\\_CSD Projects\County Control Systems\CHICKASAW\CHICK-34\CHICK-34.dwg, 11/30/2016 10:54:49 AM