

UNITED STATES PUBLIC LAND SURVEY CORNER CERTIFICATE

OF

Land Survey Monuments situated in Section 18, Township 95 North, Range 13 West, of the Fifth Principal Meridian, CHICKASAW County, Iowa. Previously recorded in none in County Recorder's Office.
(book, page, document number, etc.)

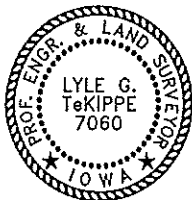
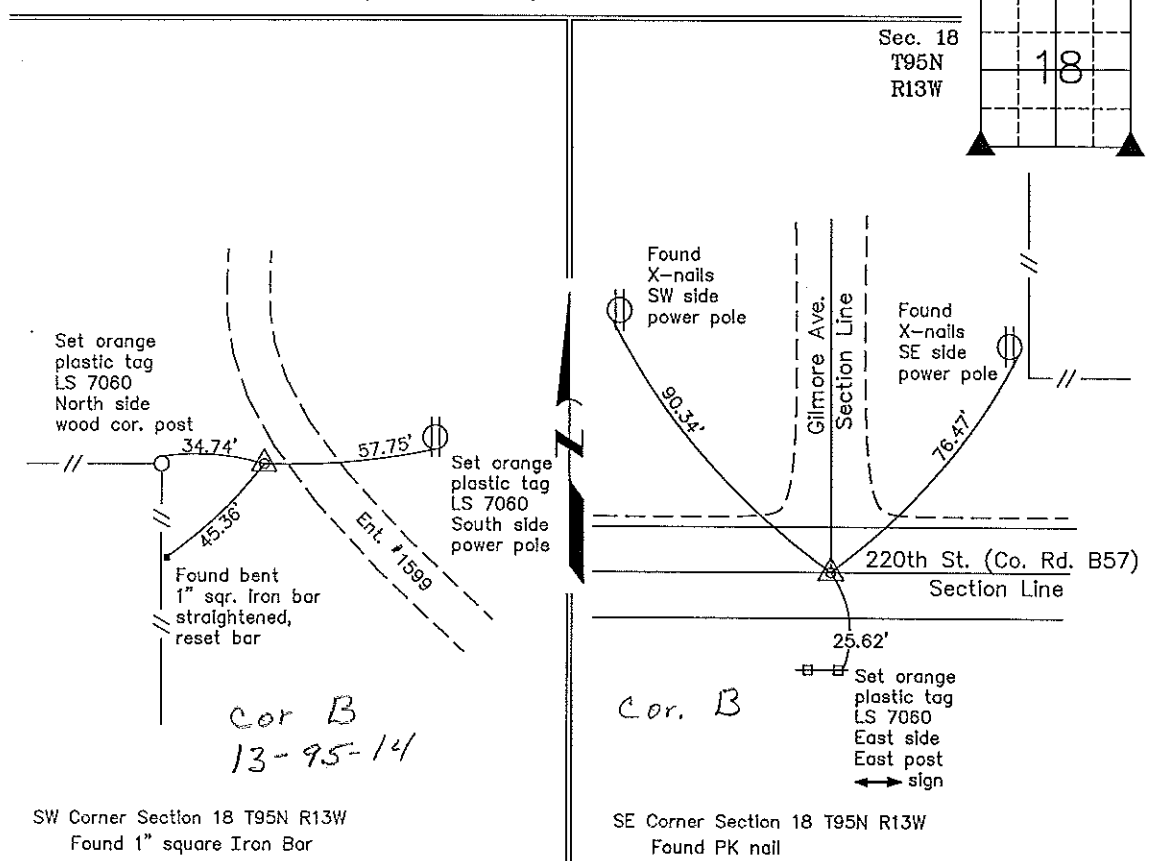
(Show reason for preparing this certificate, the evidence and detailed procedures used in establishing the corner positions and monumentation found or placed.)

Monument Description and Remarks: SW Corner Section 18 T95N R13W: Found 1" square iron bar with information obtained from the Chickasaw County Engineer's Office in the Field Book "Chickasaw Twp. Corner Ties", Section 13, corner 'B'.

SE Corner Section 18 T95N R13W: Found PK nail with information obtained from the Chickasaw County Engineer's Office in the Field Book "Dayton Twp. Corner Ties", Section 18, corner 'B'.

PLAN - VIEW

(Show a minimum of three reference ties to durable physical objects, relevant monuments and physical conditions that will enable recovery of the corner.)



I hereby certify that this land surveying document was prepared and the related survey work was performed by me or under my direct personal supervision and that I am a duly licensed Land Surveyor under the laws of the State of Iowa.

Lyle G. TeKippe 5-25-99
Lyle G. TeKippe Date
License number 7060
My license renewal date is December 31, 2000.
Sheets covered by this seal: Individual

List Corners to be Indexed			
Corners	Section	Twp.	Range
SW	18	95N	13W
<i>Corner B section 13 95-14</i>			
SE	18	95N	13W
<i>Corner B 18-95-13</i>			
<i>Placed in Tie Book 5/26/99</i>			

171-471

"County Engineer's Copy"