

Chickasaw Co. Recorder
 Cindy Messersmith
Fee Book 2010-0594
 04/29/2010 @10:25AM
 SCC: SEC COR CERT # Pages: 1
 Book: Page: \$9.00
 Total Fees: \$9.00

TeKIPPE ENGINEERING, P.C., 128 South Vine Street, West Union, Iowa 52175 Phone (563) 422-5131

UNITED STATES PUBLIC LAND SURVEY CORNER CERTIFICATE

OF

Land Survey Monuments situated in Section 18, Township 95 North, Range 13 West of the Fifth Principal Meridian, Chickasaw County, Iowa. Previously recorded in (1) none (2) Bk. 171, Pg. 471 in County Recorder's Office.
(book, page, document number, etc.)

(Show reason for preparing this certificate, the evidence and detailed procedures used in establishing the corner positions and monumentation found or placed.)

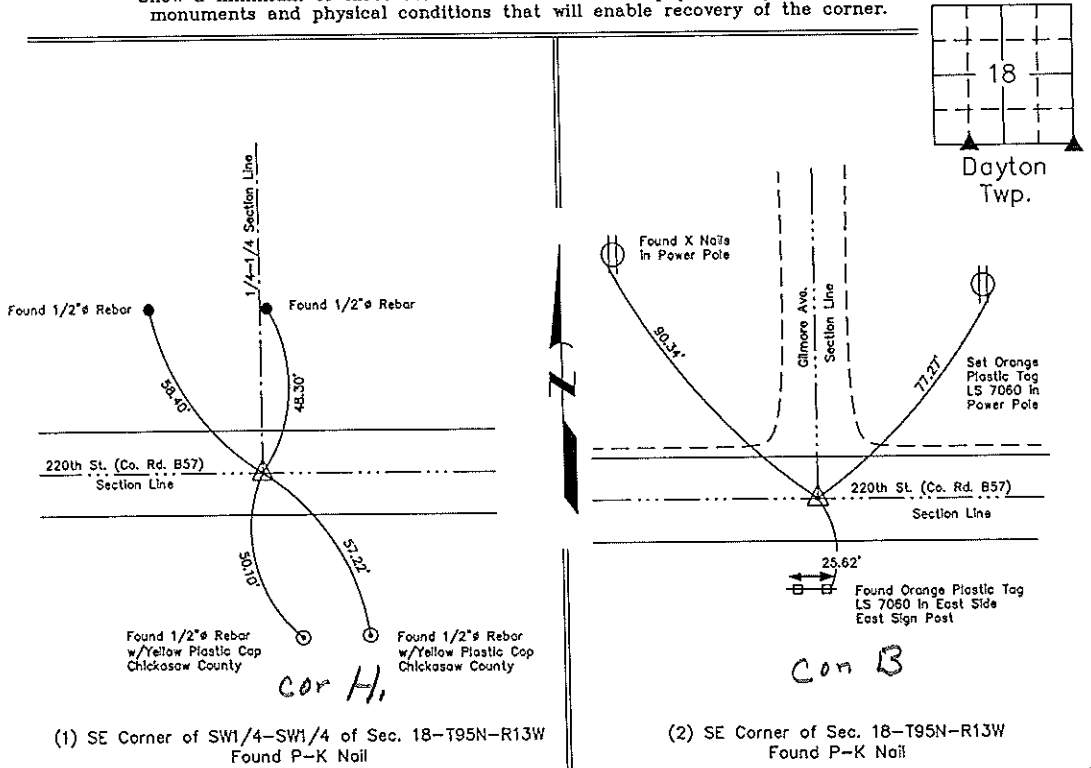
Monument Description and Remarks: (1) SE Corner of SW-SW of Section 18-T95N-R13W:
 Found P-K nail from Chickasaw County Engineer's ties, dated 11/25/08, on file in the Chickasaw County Engineer's office, New Hampton, Iowa.

(2) SE Corner of Section 18-T95N-R13W:
 Found P-K nail, updating certificate because monument has changed and one tie was missing from current certificate of record, added one new tie.

PLAN VIEW

Project Number 101046.LS
 Field Book: 46M, Page 67

Show a minimum of three reference ties to durable physical objects, relevant monuments and physical conditions that will enable recovery of the corner.



(1) SE Corner of SW1/4-SW1/4 of Sec. 18-T95N-R13W
 Found P-K Nail

(2) SE Corner of Sec. 18-T95N-R13W
 Found P-K Nail

I hereby certify that this land surveying document was prepared and the related survey work was performed by me or under my direct personal supervision and that I am a duly licensed Land Surveyor under the laws of the State of Iowa.

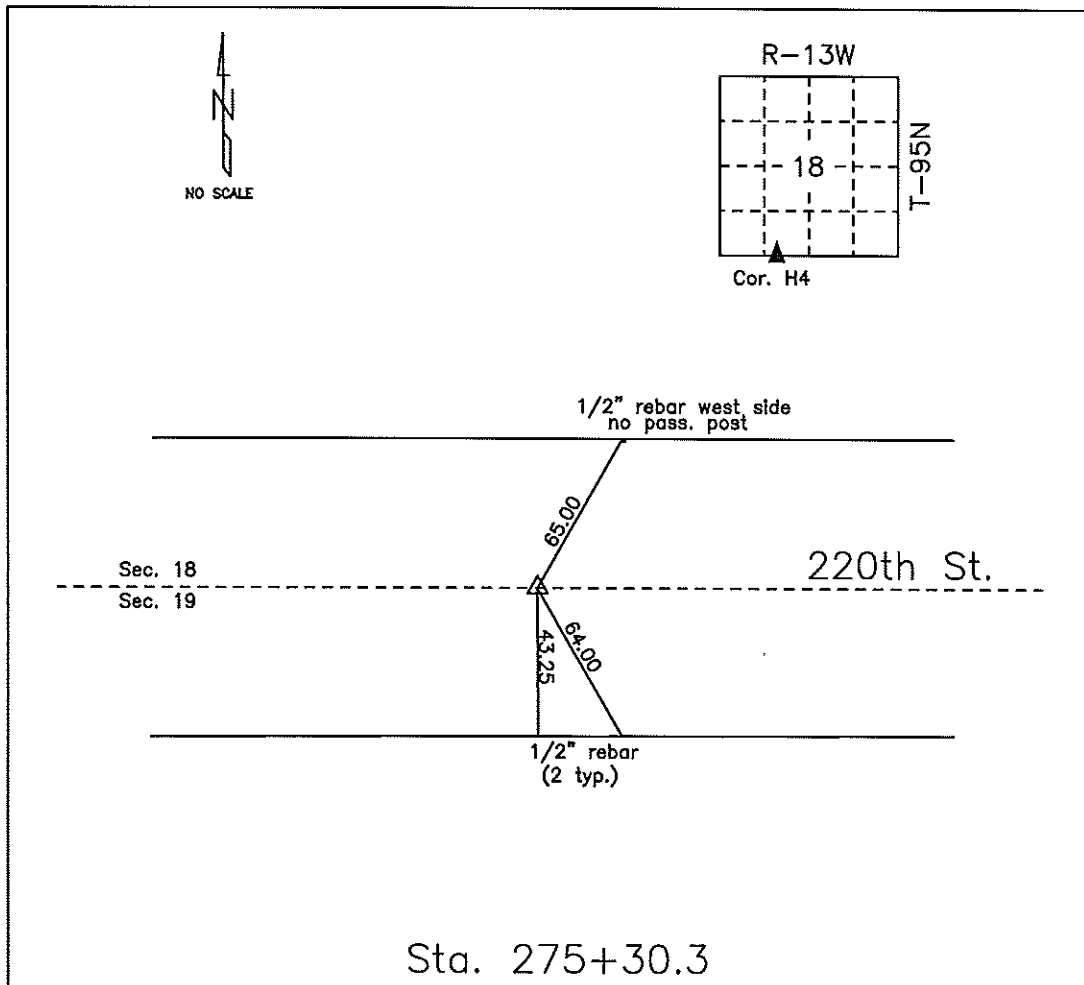
LYLE G. TeKIPPE
 7060
 Lyle G. TeKippe Date 4-29-10
 License Number 7060
 My license renewal date is December 31, 2010.
 Sheets covered by this seal: Individual

List Corners to be Indexed			
Corners	Section	Twp.	Range
SE of SW-SW	18	95N	13W
SE	18	95N	13W

X:\Section Corners\Sec. 18\18-95-13VY.dwg

COUNTY ENGINEER'S SECTION CORNER PRESERVATION RECORD

LAND SURVEY MONUMENT LOCATED IN SECTION 18, TOWNSHIP 95 N
NORTH, RANGE 13 W, OF THE 5TH P.M. Chickasaw COUNTY, IOWA
PREVIOUSLY RECORDED COUNTY ENGINEER'S OFFICE.



MONUMENT DESCRIPTION AND NARRATIVE Set PK nail in mat 11/25/08

Previously recorded as PT Sta. 275+30.3 in Chickasaw County Project Plans SN-1615(4)--51-19

All ties are slope chained.

I AM NOT A REGISTERED LAND SURVEYOR UNDER THE LAWS OF THE STATE OF IOWA

JIM FOSTER CHICKASAW CO. DATE: 11/25/08