

Prepared by & Return to: Harold - Reicks Surveying, 10 East Main Street, New Hampton, IA 50659, Ph. 641-994-2725

UNITED STATES PUBLIC LAND SURVEY CORNER CERTIFICATE

Land Survey Monuments situated in Section 18, Township 95 North, Range 13 West of the Fifth Principal Meridian, Chickasaw County, Iowa. Previously recorded in Document #2012-2404 in the County Recorder's office.

This certificate is being prepared in compliance with Iowa Code Chapter 355.11 because:

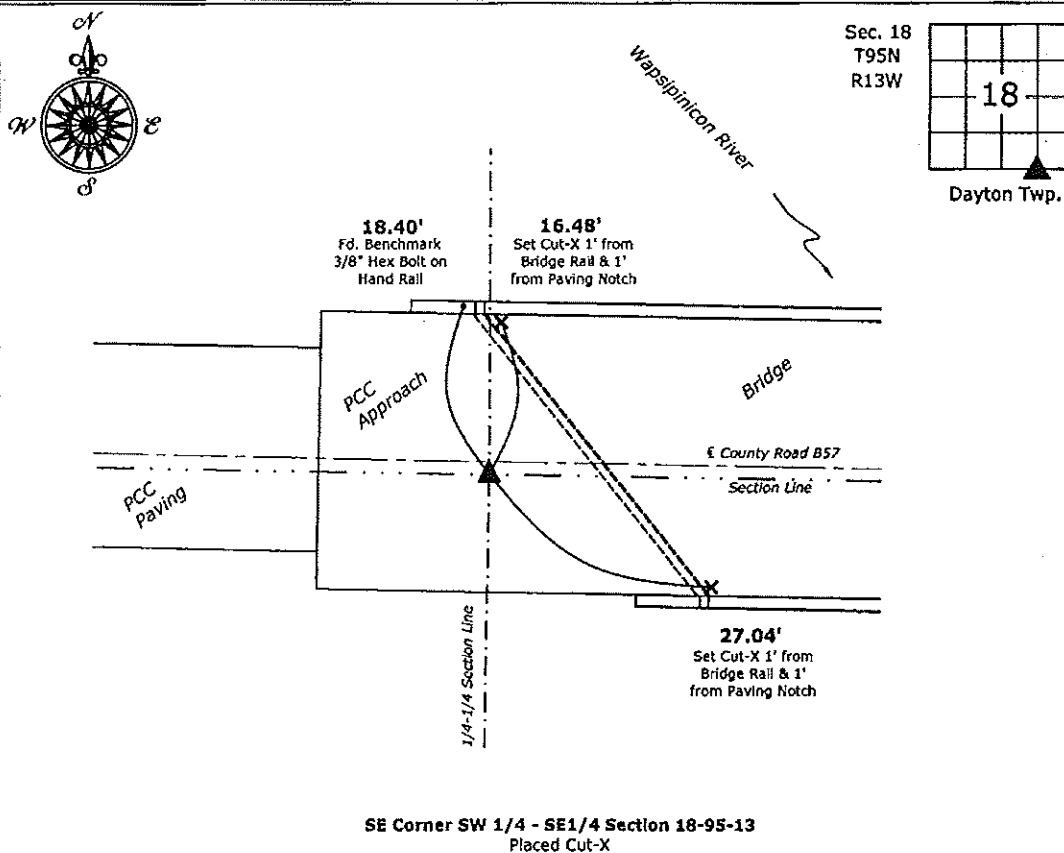
- There is no certificate on file for this corner.
- There are no longer three valid ties of record.
- There are changes to reference ties of record.
- There is change of monumentation of record.
- To clarify description of record monument (ties).

Monument Description and Remarks:

Southeast Corner SW 1/4 - SE1/4: Placed Cut "X" at previous location by means of coordinates obtained prior to highway and bridge reconstruction, Chickasaw County Project No. BRS-CO19(78)--60-19.

PLAN - VIEW

(Show a minimum of three reference ties to durable physical objects, relevant monuments and physical conditions that will enable recovery of the corner.)



SE Corner SW 1/4 - SE1/4 Section 18-95-13
Placed Cut-X



I hereby certify that this land surveying document was prepared and the related survey work was performed by me or under my direct personal supervision and that I am a duly licensed Land Surveyor under the laws of the State of Iowa.
Kirk D. Reicks 8-28-14
 Kirk D. Reicks Date:
 License number 19211
 My license renewal date is December 31, 2014.
 Sheets covered by this seal: Individual sheet only

List Corners to be Indexed			
Corners	Section	Twp.	Range
SE-SW-SE	18	95	13
Project Number: 2014-002			
FB: Chickasaw County 6, Pg. 55			

Prepared by & Return to: Harold - Reicks Surveying, 10 East Main Street, New Hampton, IA 50659, Ph. 641-354-2725

UNITED STATES PUBLIC LAND SURVEY CORNER CERTIFICATE

Land Survey Monuments situated in Section 18, Township 95 North, Range 13 West of the Fifth Principal Meridian, Chickasaw County, Iowa. 1., 2.) Not previously recorded in the County Recorder's office.

This certificate is being prepared in compliance with Iowa Code Chapter 355.11 because:

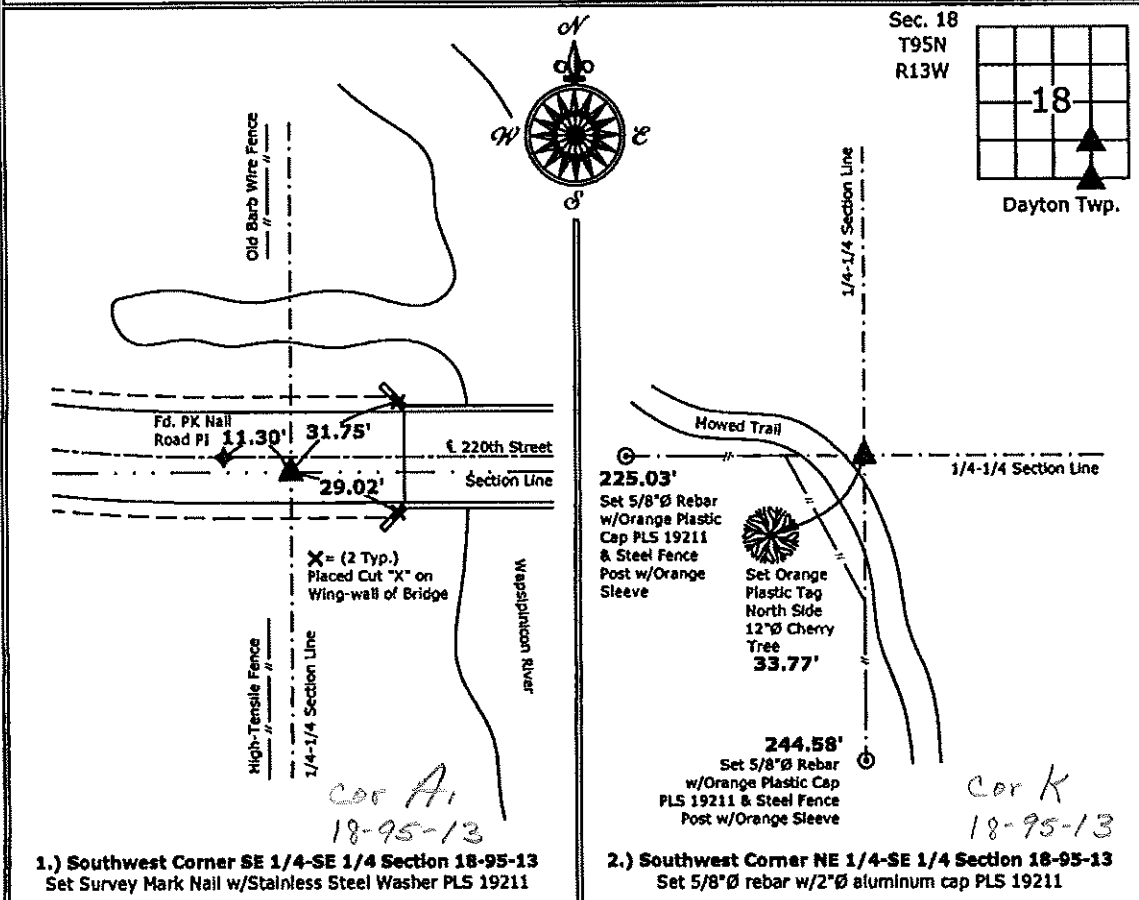
1 & 2 There is no certificate on file for this corner.
 There are no longer three valid ties of record.
 There are changes to reference ties of record.
 There is change of monumentation of record.
 To clarify description of record monument (ties).

Monument Description and Remarks:

- Southwest Corner SE 1/4-SE 1/4:** Set Survey Mark Nail w/Stainless Steel Washer PLS 19211 equidistant and online between South 1/4 Corner and Southeast Corner of Section 18.
- Southwest Corner NE 1/4-SE 1/4:** Set 5/8"Ø rebar with 2"Ø aluminum Cap PLS 19211 at the intersection of the Quarter-Quarter Section lines.

PLAN - VIEW

(Show a minimum of three reference ties to durable physical objects, relevant monuments and physical conditions that will enable recovery of the corner.)



I hereby certify that this land surveying document was prepared and the related survey work was performed by me or under my direct personal supervision and that I am a duly licensed Land Surveyor under the laws of the State of Iowa.

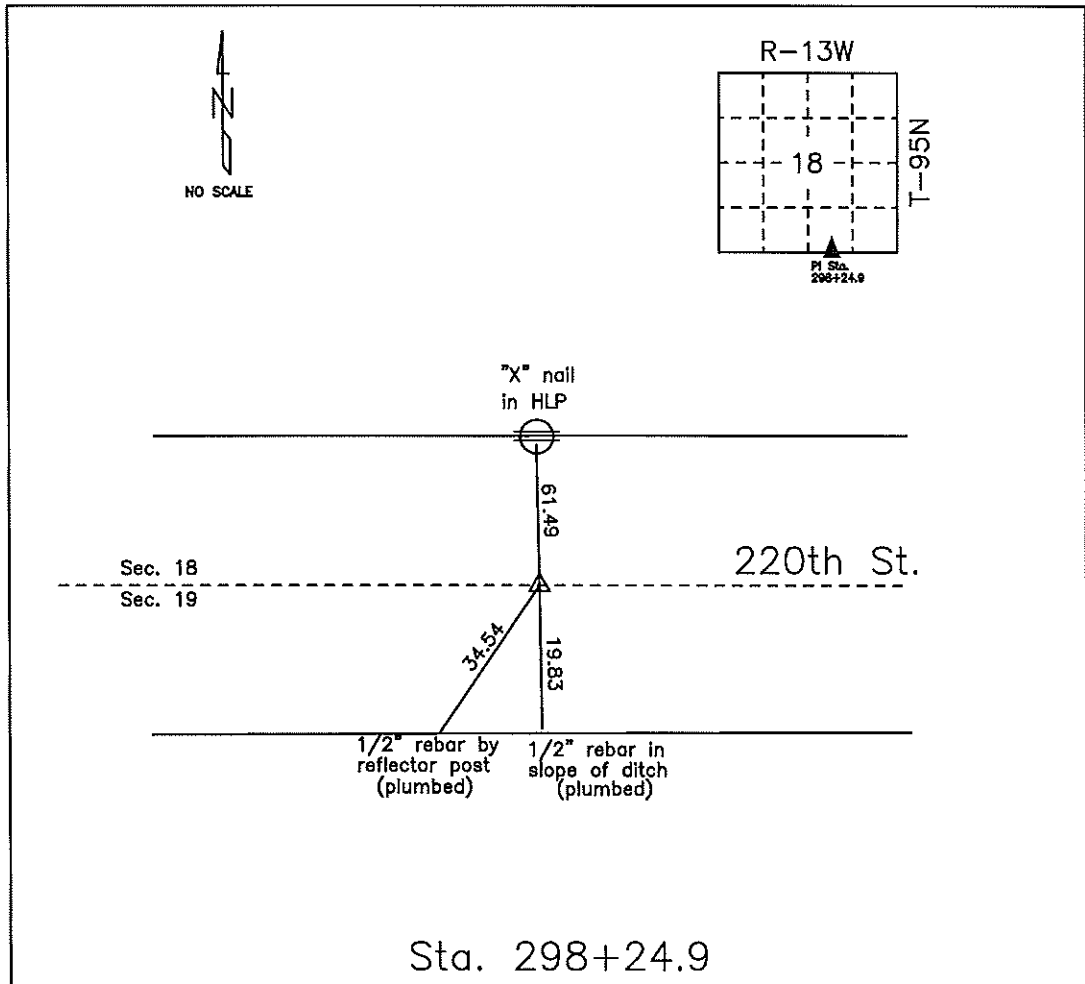
Kirk D. Reicks 11-30-12
 Kirk D. Reicks Date:
 License number 19211
 My license renewal date is December 31, 2012.
 Sheets covered by this seal: Individual sheet only

List Corners to be Indexed			
Corners	Section	Twp.	Range
SW-SE-SE	18	95	13
SW-NE-SE	18	95	13

Project Number: 2012-167
 FB: Chickasaw County 4, Pgs. 65-67

COUNTY ENGINEER'S SECTION CORNER PRESERVATION RECORD

LAND SURVEY MONUMENT LOCATED IN SECTION 18, TOWNSHIP 95 N
NORTH, RANGE 13 W, OF THE 5TH P.M. Chickasaw COUNTY, IOWA
PREVIOUSLY RECORDED COUNTY ENGINEER'S OFFICE



MONUMENT DESCRIPTION AND NARRATIVE FND nail in mat 08/06/09

Previously recorded as PC sta. 298+24.9 in Chickasaw County Project Plans SN-1615(4)--51-19.

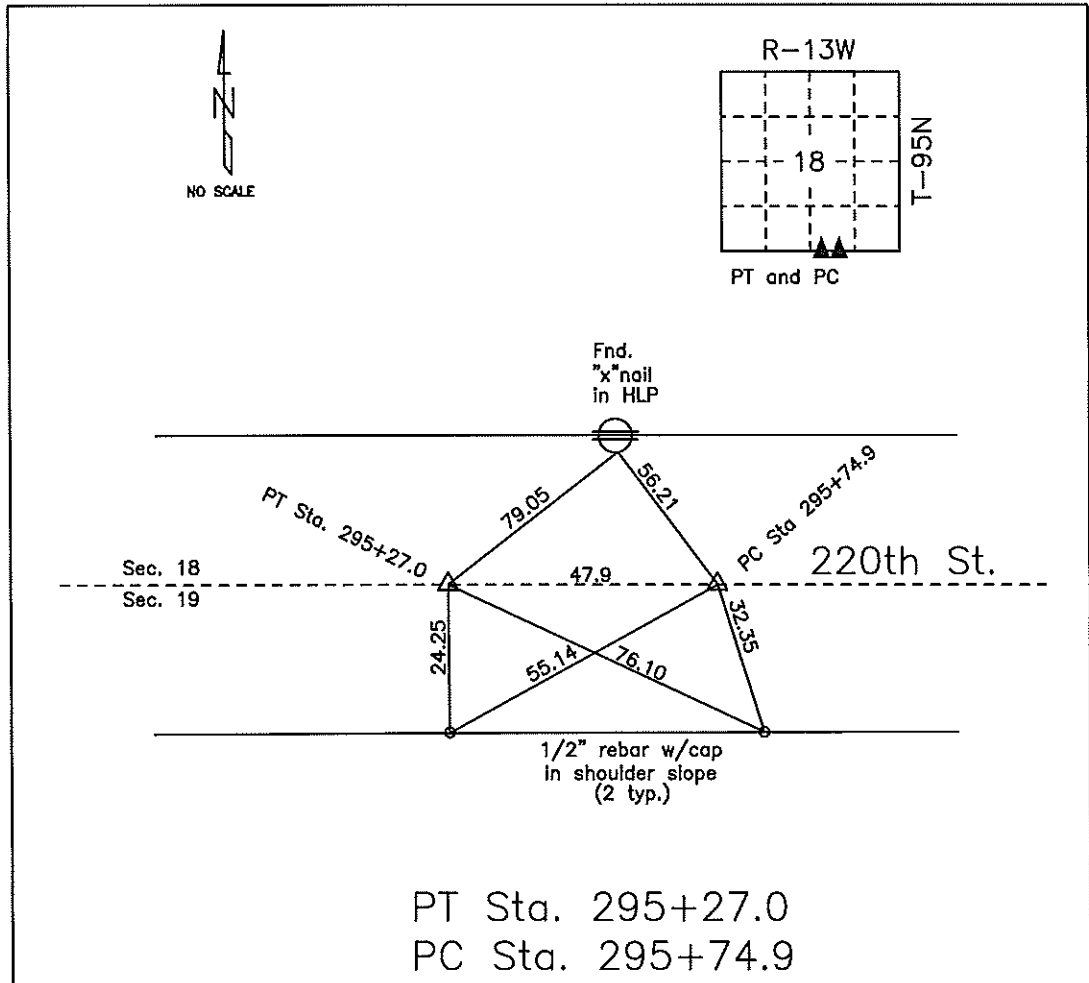
North tie is slope chained. Both South ties are plumbed.

I AM NOT A REGISTERED LAND SURVEYOR UNDER THE LAWS OF THE STATE OF IOWA

JIM FOSTER CHICKASAW CO. DATE: 08/06/09

COUNTY ENGINEER'S SECTION CORNER PRESERVATION RECORD

LAND SURVEY MONUMENT LOCATED IN SECTION 18, TOWNSHIP 95 N
NORTH, RANGE 13 W, OF THE 5TH P.M. Chickasaw COUNTY, IOWA
PREVIOUSLY RECORDED COUNTY ENGINEER'S OFFICE.



MONUMENT DESCRIPTION AND NARRATIVE Set PK nails in mat 11/25/08

Previously recorded as PT Sta. 295+27.0 and PC Sta. 295+74.9 in Chickasaw County Project Plans

SN-1615(4)--51-19.

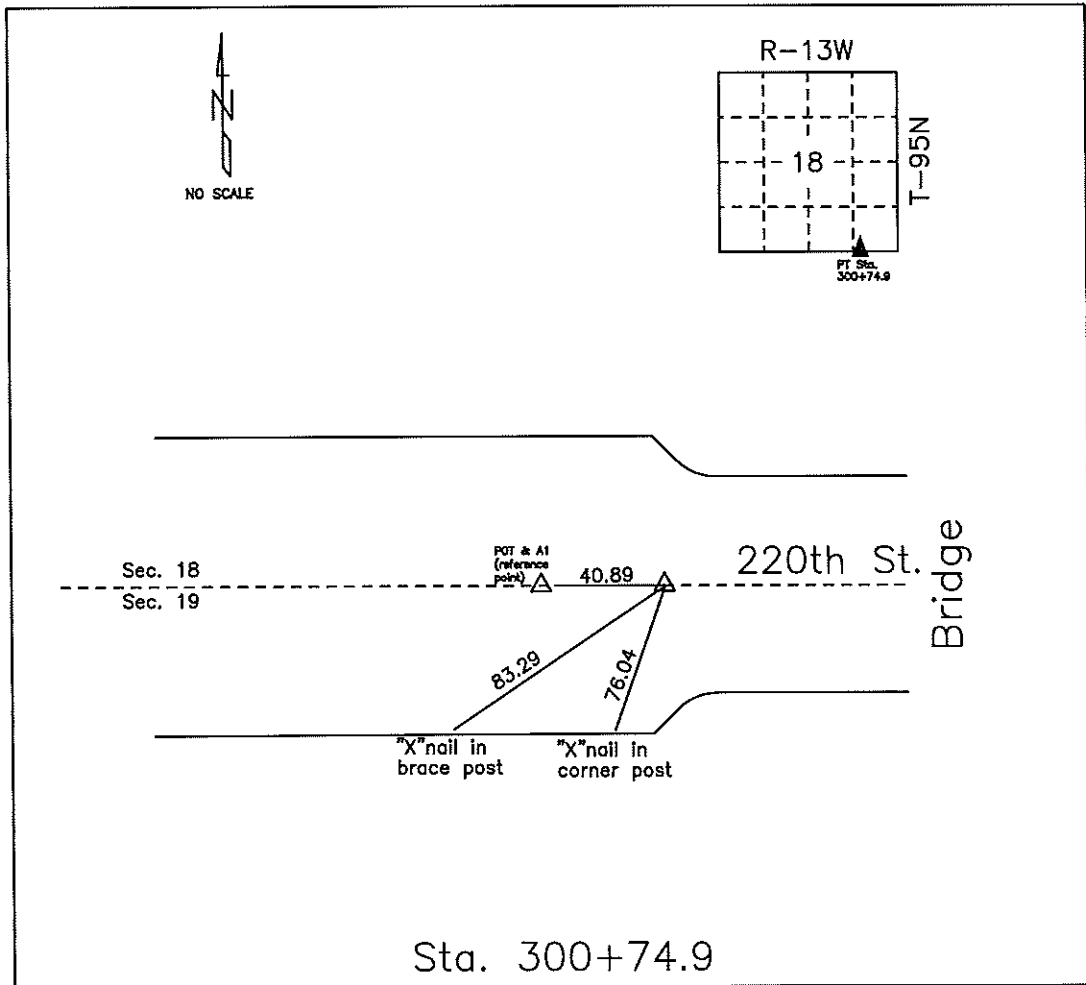
All ties are slope chained.

I AM NOT A REGISTERED LAND SURVEYOR UNDER THE LAWS OF THE STATE OF IOWA

JIM FOSTER CHICKASAW CO. DATE: 11/25/08

COUNTY ENGINEER'S SECTION CORNER PRESERVATION RECORD

LAND SURVEY MONUMENT LOCATED IN SECTION 18, TOWNSHIP 95 N
NORTH, RANGE 13 W, OF THE 5TH P.M. Chickasaw COUNTY, IOWA
PREVIOUSLY RECORDED COUNTY ENGINEER'S OFFICE.



MONUMENT DESCRIPTION AND NARRATIVE FND PK nail in mat 08/06/09

Previously recorded as sta. 300+74.9 in Chickasaw County Project Plans SN-1615(4)--51-19.

All ties are slope chained.

I AM NOT A REGISTERED LAND SURVEYOR UNDER THE LAWS OF THE STATE OF IOWA

JIM FOSTER CHICKASAW CO. DATE: 08/06/09