

Instrument #: 2021-0465
 03/08/2021 11:16:40 AM Total Pages: 1
 SCC SECTION CORNER CERTIFICATES
 Recording Fee: \$ 7.00
 Shirley Troyna, Recorder, Chickasaw County Iowa



PREPARED BY/RETURN TO: MIDLAND SURVEYING, INC. 501 N. MARKET ST. MARYVILLE, MO 64468 (660) 582-8633

UNITED STATES PUBLIC LAND SURVEY CORNER CERTIFICATE

OF

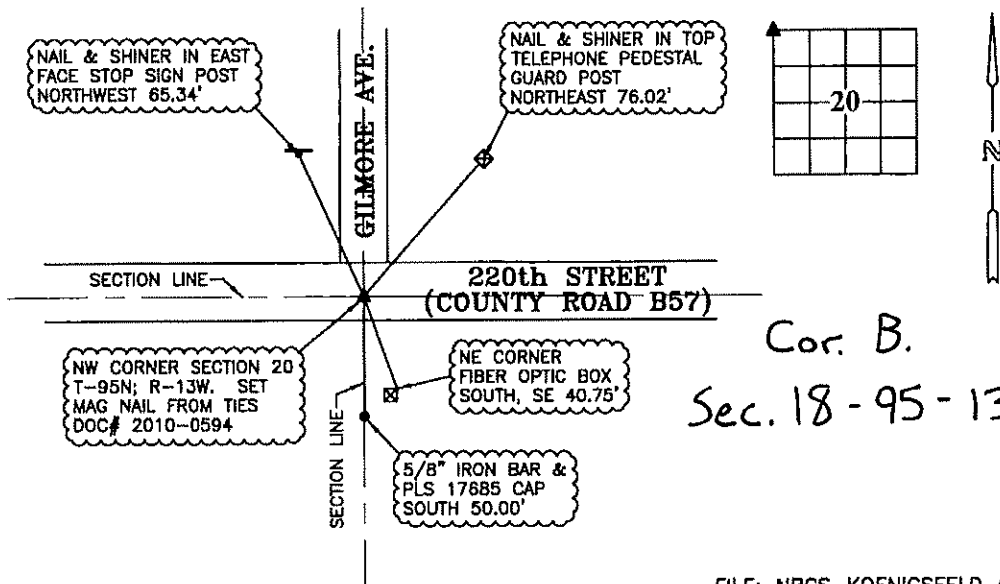
Land Survey Monuments situated in Section 20, Township T-95N, Range R-13W, of the Fifth Principal Meridian, Chickasaw County, Iowa.

RESTORED FROM REMAINING TIES (DOC #2010-0594) AND MULTIPLE SURVEYS OF RECORD.

Monument Description and Remarks:

NW CORNER SECTION 20, T-95N; R-13W - SET MAG NAIL.

PLAN - VIEW



Cor. B.
 Sec. 18-95-13

FILE: NRCS_KOENIGSFELD_C

I HEREBY CERTIFY THAT THIS LAND SURVEYING DOCUMENT WAS PREPARED AND THE RELATED SURVEY WORK WAS PERFORMED BY ME OR UNDER MY DIRECT PERSONAL SUPERVISION AND THAT I AM A DULY LICENSED PROFESSIONAL LAND SURVEYOR UNDER THE LAWS OF THE STATE OF IOWA.

Adam Teale 4-21
 ADAM TEALE, P.L.S. (DATE)

LICENSE NUMBER PLS 17685

MY LICENSE RENEWAL DATE IS DECEMBER 31, 2022

PAGES OR SHEETS COVERED BY THIS SEAL: 1 OF 1

CORNER TO BE INDEXED
 Corner coordinates in Iowa State Plane South, NAD1983 (HARN96), U.S. Survey Feet.

Corner: NW Section: 20
 Twp: T-95N Rng: R-13W

