

Chickasaw Co. Recorder
 Cindy Messersmith
Fee Book 2008-2073
 10/29/2008 @1105AM
 SCC SEC COR CERT
 Book: Page: # Pages: 1
 Total Fees: \$7.00

Herold - Rocks Surveying, 25 1/2 East Main Street, Suite 204, New Hampton, IA 50658, Ph. 641-394-2725

UNITED STATES PUBLIC LAND SURVEY CORNER CERTIFICATE

Land Survey Monuments situated in Section 1, Township 95 North, Range 13 West of the Fifth Principal Meridian, Chickasaw County, Iowa. Previously recorded in Bk. 169, Pg. 292 in the Chickasaw County Recorder's office.

This certificate is being prepared in compliance with Iowa Code Chapter 355.11 because:

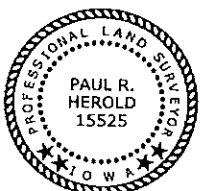
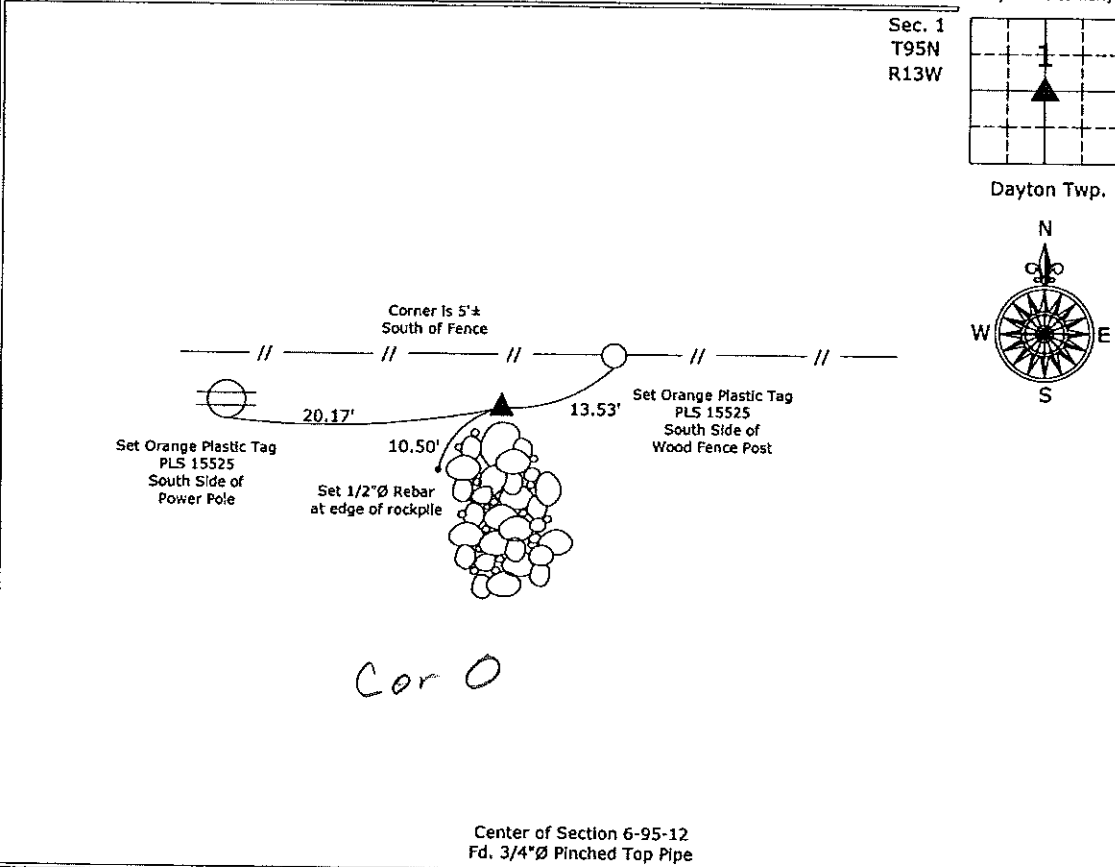
- There is no certificate on file for this corner.
- There are no longer three valid ties of record.
- There are changes to reference ties of record.
- There is change of monumentation of record.
- To clarify description of record monument (ties).

Monument Description and Remarks:

Center of Section 6-95-12: Fd. 3/4"Ø Pinched Top Pipe matching description on the previous Section Corner Certificate, the fence was replaced with a new one and all of the previous ties were gone, established 3 new ties.

PLAN - VIEW

(Show a minimum of three reference ties to durable physical objects, relevant monuments and physical conditions that will enable recovery of the corner.)



I hereby certify that this land surveying document was prepared and the related survey work was performed by me or under my direct personal supervision and that I am a duly licensed Land Surveyor under the laws of the State of Iowa.

Paul R. Herold 10-29-08
 Paul R. Herold Date:
 License number 15525
 My license renewal date is December 31, 2008.
 Sheets covered by this seal: Individual sheet only

List Corners to be Indexed			
Corners	Section	Twp.	Range
Center	1	95	13
Project Number: 2008-019			
FB: Chickasaw County 2, Pgs. 1-10			

File: S:_Projects\2008\2008-019.dwg, 10/28/2008 01:37:10

UNITED STATES PUBLIC LAND SURVEY CORNER CERTIFICATE

OF

Land Survey Monuments situated in Section 1, Township 95 North, Range 13 West, of the Fifth Principal Meridian, CHICKASAW County, Iowa.
 Previously recorded in none in County Recorder's Office.
(book, page, document number, etc.)

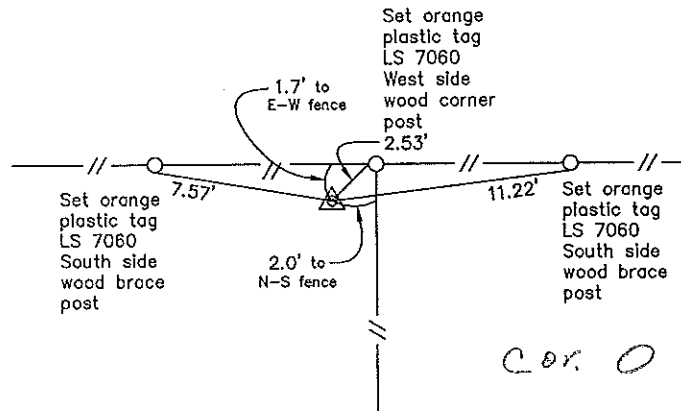
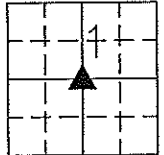
(Show reason for preparing this certificate, the evidence and detailed procedures used in establishing the corner positions and monumentation found or placed.)

Monument Description and Remarks: Center of Section 1 T95N R13W: Found
3/4" ϕ pinched top pipe, shown as set on a Survey and Plat made by
James W. Wiseman, LS 3844, recorded in the Chickasaw County Recorder's Office
on May 6, 1970, in Deeds Book 99, Pages 364-365.

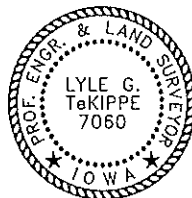
PLAN - VIEW

(Show a minimum of three reference ties to durable physical objects, relevant monuments and physical conditions that will enable recovery of the corner.)

Sec. 1
T95N
R13W



Center of Section 1 T95N R13W
 Found 3/4" ϕ pinched top pipe



I hereby certify that this land surveying document was prepared and the related survey work was performed by me or under my direct personal supervision and that I am a duly licensed Land Surveyor under the laws of the State of Iowa.

Lyle G. TeKippe 11-3-98
 Lyle G. TeKippe Date
 License number 7060
 My license renewal date is December 31, 1998.
 Sheets covered by this seal: Individual

List Corners to be Indexed			
Corners	Section	Twp.	Range
Center	1	95N	13W

Placed in tie book
 11/5/98
 JEM

"County Engineer's Copy"