

UNITED STATES PUBLIC LAND SURVEY CORNER CERTIFICATE

OF

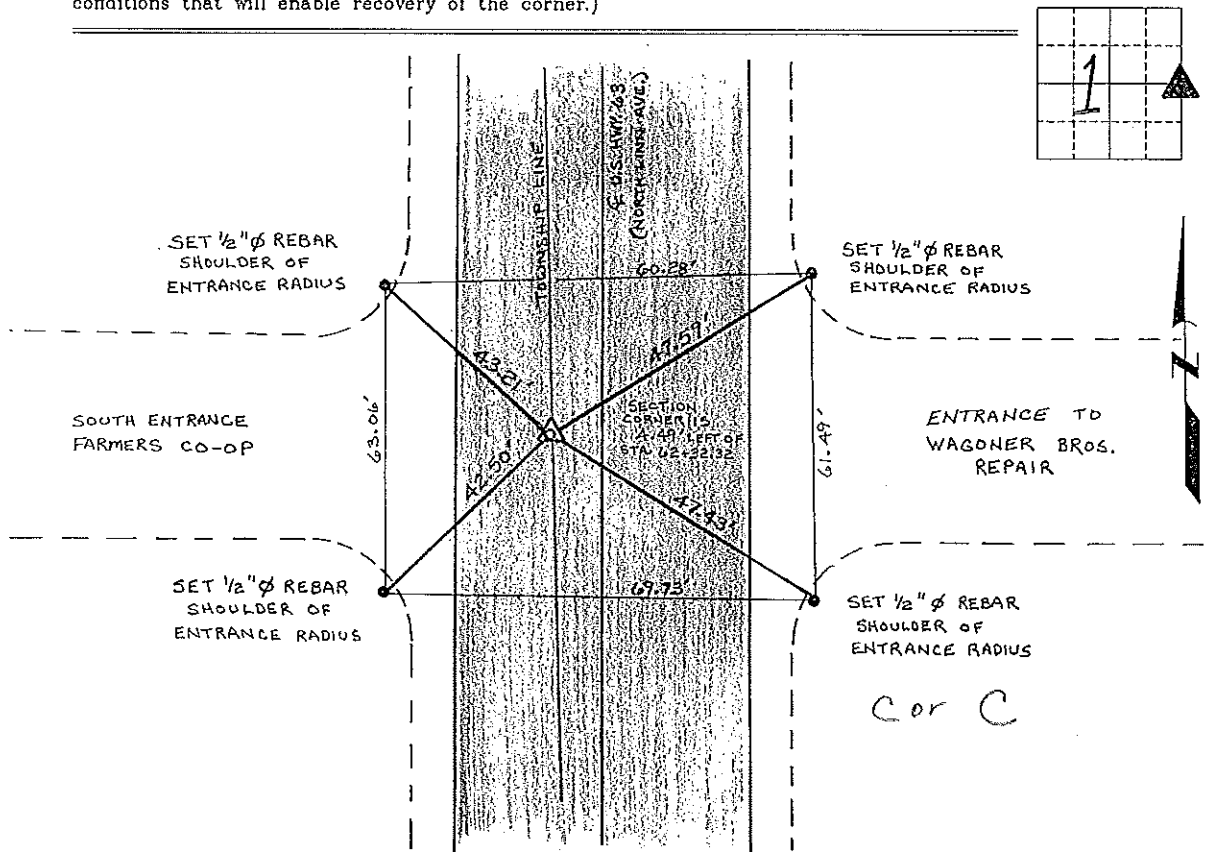
Land Survey Monuments situated in Section 1, Township 95 North, Range 13 West, of the Fifth Principal Meridian, CHICKASAW County, Iowa. Previously recorded in NONE in County Recorder's Office.
(book, page, document number, etc.)

(Show reason for preparing this certificate, the evidence and detailed procedures used in establishing the corner positions and monumentation found or placed.)

Monument Description and Remarks: E 1/4 CORNER SECTION 1 T 95N R 13W:
FOUND LEAD PLUG - ADDED CUT-X, LOCATED FROM INFORMATION OBTAINED FROM THE IOWA DEPARTMENT OF TRANSPORTATION, AMES OFFICE, ON A LAND CORNER SURVEY AND A LAND AND LOT CORNER SURVEY, BOTH MADE BY JOHN D. FRANKLIN R.L.S. No. 2051, SIGNED AUGUST 31, 1959, PROJECT NO. F-35, COPIES ON FILE IN OUR OFFICE, AND AVAILABLE UPON REQUEST.
NOTE: SECTION CORNER IS 4.49' LEFT (WEST) OF ♀ STATION 62+32.32 U.S. HIGHWAY 63.

PLAN - VIEW

(Show a minimum of three reference ties to durable physical objects, relevant monuments and physical conditions that will enable recovery of the corner.)



I hereby certify that this land surveying document was prepared and the related survey work was performed by me or under my direct personal supervision and that I am a duly licensed Land Surveyor under the laws of the State of Iowa.

Lyle G. Tekippe 11-25-97
 Lyle G. Tekippe Date
 License number 7080
 My license renewal date is December 31, 1988.
 Sheets covered by this seal: Individual



List Corners to be Indexed

Corners	Section	Twp.	Range
E 1/4	1	95N	13W

Corner C 1-95-13
 Placed in the Book 12/2/97