

UNITED STATES PUBLIC LAND SURVEY CORNER CERTIFICATE

OF

Land Survey Monuments situated in Section 1, Township 95 North, Range 13 West of the Fifth Principal Meridian, CHICKASAW County, Iowa. Previously recorded in none in County Recorder's Office. (book, page, document number, etc.)

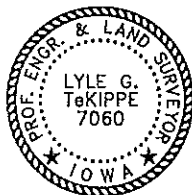
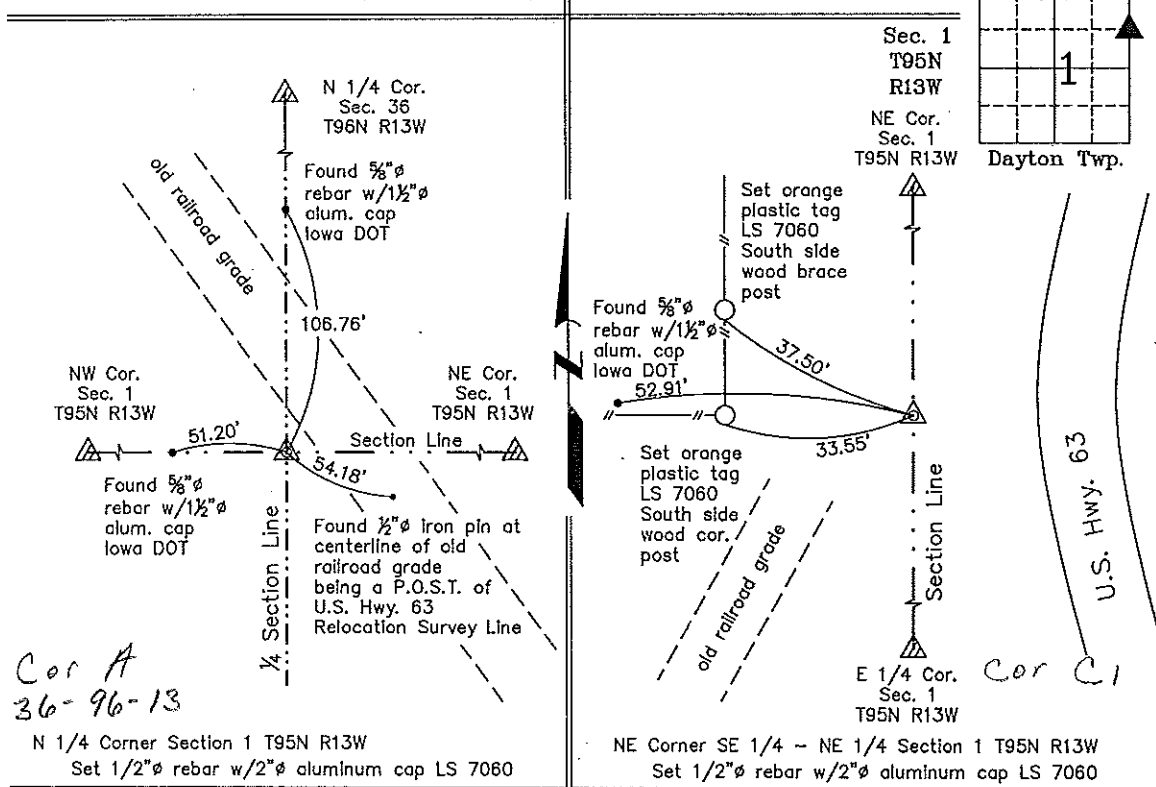
(Show reason for preparing this certificate, the evidence and detailed procedures used in establishing the corner positions and monumentation found or placed.)

Monument Description and Remarks: N 1/4 Corner Section 1 T95N R13W: Set 1/2"Ø rebar w/2"Ø aluminum cap LS 7060 by extending a line from the NW Corner through a found 5/8"Ø rebar w/1-1/2"Ø aluminum Iowa DOT cap and intersecting a line extended from the N 1/4 Corner Section 36 T96N R13W through a found 5/8"Ø rebar w/1-1/2"Ø aluminum Iowa DOT cap. NE Corner SE 1/4 - NE 1/4 Section 1 T95N R13W: Set 1/2"Ø rebar w/2"Ø aluminum cap LS 7060 by extending a line through two found monuments on the 1/4-1/4 Section Line and intersecting the Section Line between the NE Corner and the E 1/4 Corner.

PLAN - VIEW

Project Number 00046,LS
FB 46H PG. 1-3

(Show a minimum of three reference ties to durable physical objects, relevant monuments and physical conditions that will enable recovery of the corner.)



I hereby certify that this land surveying document was prepared and the related survey work was performed by me or under my direct personal supervision and that I am a duly licensed Land Surveyor under the laws of the State of Iowa.

Lyle G. TeKippe 2-16-01
Lyle G. TeKippe Date
License number 7060
My license renewal date is December 31, 2000.
Sheets covered by this seal: Individual

List Corners to be Indexed			
Corners	Section	Twp.	Range
N 1/4	1	95N	13W
Cor A	Sec 36	Washington Twp.	
NE-SE-NE	1	95N	13W
Cor C1			Put in tie book 3-19-01

County Engineer's
Index