

Section 16-95-13
 As referred to in
 Engr. TIC Book

UNITED STATES PUBLIC LAND SURVEY CORNER CERTIFICATE

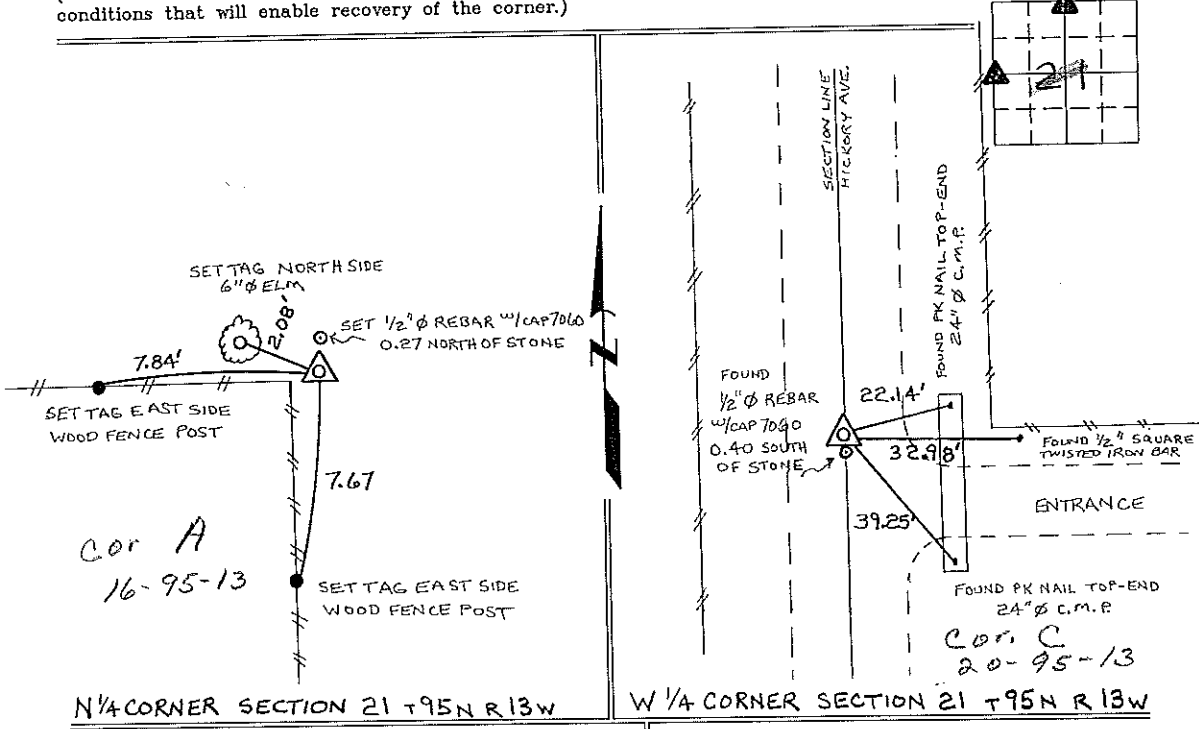
OF
 Land Survey Monuments situated in Section 21¹⁶, Township 95 North, Range 13 West, of the Fifth Principal Meridian, CHICKASAW County, Iowa. Previously recorded in W 1/4 COR. BOOK 158, PAGE 442 / N 1/4 COR. NONE in County Recorder's Office.
(book, page, document number, etc.)

(Show reason for preparing this certificate, the evidence and detailed procedures used in establishing the corner positions and monumentation found or placed.)

Monument Description and Remarks: N 1/4 CORNER SECTION 21 T 95 N R 13 W: FOUND A 12" X 7" X 12" GRANITE STONE 1/2" DIA. ON TOP, SET 1/2" Ø REBAR 0.27' NORTH, STONE WAS USED ON A SURVEY AND PLAT MADE BY LYLE G. TEKIPPE RECORDED JULY 24, 1990, BOOK 145, PAGES 214-216, AND USED IN A DEED DESCRIPTION RECORDED SEPT. 12, 1990, BOOK 145 PAGE 351, CHICK. CO. RECORDERS OFFICE.
W 1/4 CORNER SECTION 21, T 95 N R 13 W: FOUND C 12" X 2" GRANITE STONE 1/2" Ø REBAR 1/4" CAP 7060 0.40' SOUTH, ORIGINAL CERTIFICATE (E 1/4 COR. SEC. 20, BOOK 158, PAGE 442) NEGLECTED TO SHOW THE LOCATION OF THE WITNESS BAR.

PLAN - VIEW

(Show a minimum of three reference ties to durable physical objects, relevant monuments and physical conditions that will enable recovery of the corner.)



I hereby certify that the survey work was completed and this certificate was prepared by me or under my direct personal supervision and that I am a duly registered land surveyor under the laws of the state of Iowa.

Signature: Lyle G. TeKippe
 Lyle G. TeKippe
 Date: 3-13-96 Reg. No. 7060
 My Registration Renewal Date is December 31, 1996



List Corners to be Indexed			
Corners	Section	Twp.	Range
N 1/4	21	95 N	13 W
W 1/4	21	95 N	13 W

Placed in TIC Book 3/22/96 JFM

Section 17-95-13
 As referred to in
 Engr. Tie Book

UNITED STATES PUBLIC LAND SURVEY CORNER CERTIFICATE

OF

Land Survey Monuments situated in Section 20, Township 95 North, Range 13 West, of the Fifth Principal Meridian, CHICKASAW County, Iowa.
 Previously recorded in NONE in County Recorder's Office.
(book, page, document number, etc.)

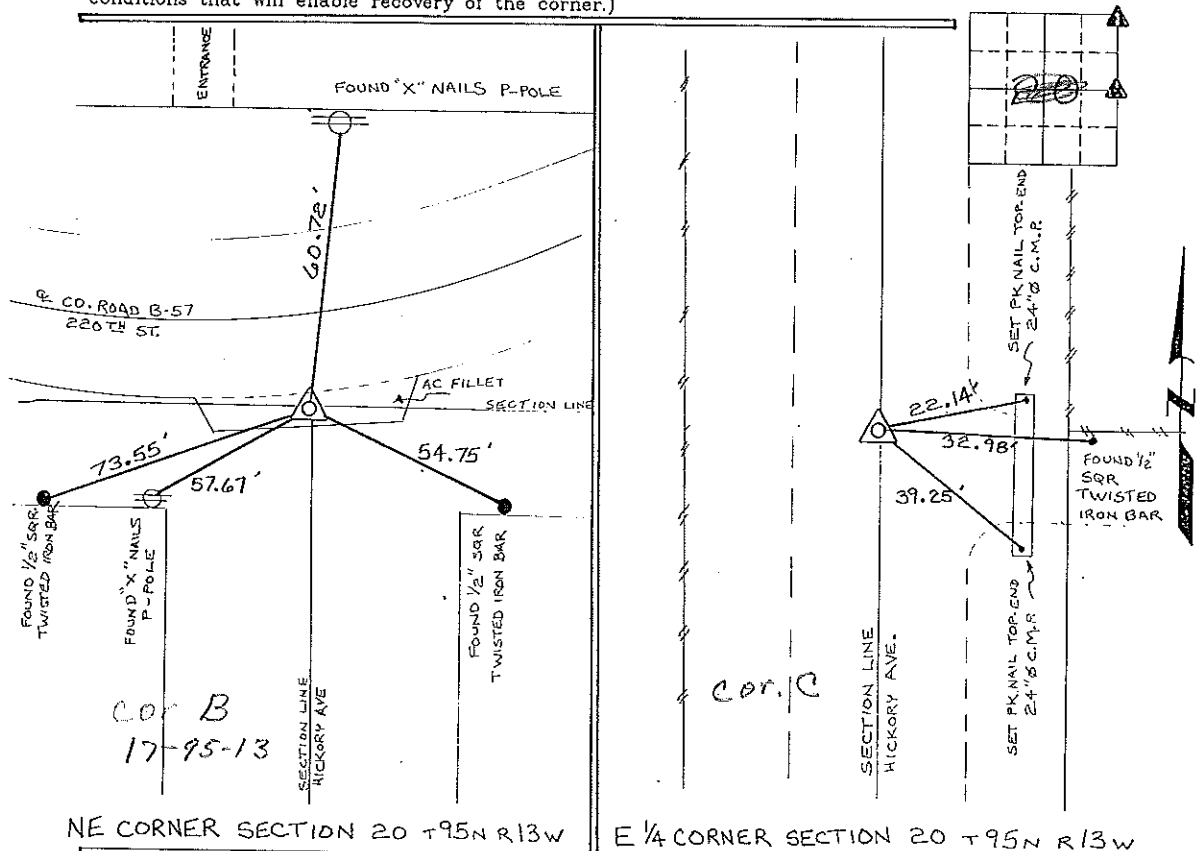
(Show reason for preparing this certificate, the evidence and detailed procedures used in establishing the corner positions and monumentation found or placed.)

Monument Description and Remarks: NE CORNER SECTION 20 T95N R13W!
SET PK NAIL FROM TIES OBTAINED FROM THE COUNTY ENGINEERS OFFICE.

E 1/4 CORNER SECTION 20 T95N R13W: FOUND B d NAIL FROM SINGLE REFERENCE TIE, REMOVED NAIL DUG DOWN 0.5 FOUND STONE 6" x 2" GRANITE W/POINTED TOP STONE CHECKS WITH TIE FROM COUNTY ENGINEERS OFFICE.

PLAN - VIEW

(Show a minimum of three reference ties to durable physical objects, relevant monuments and physical conditions that will enable recovery of the corner.)



NE CORNER SECTION 20 T95N R13W

E 1/4 CORNER SECTION 20 T95N R13W

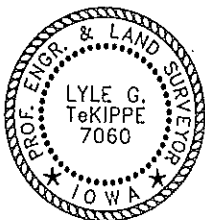
I hereby certify that the survey work was completed and this certificate was prepared by me or under my direct personal supervision and that I am a duly registered land surveyor under the laws of the state of Iowa.

Signature: Lyle G. TeKippe
 Lyle G. TeKippe

Date: 8-28-95 Reg. No. 7060

My Registration Renewal Date is December 31, 1996

Seal



Corners	Section	Twp.	Range
NE	20	95N	13W
Cor B - 17-95-13			
E 1/4	20	95N	13W
Cor C 20-95-13			

Placed in
 Tie Book 9/8/95