

Instrument #: 2018-2047
 12/26/2018 11:09:39 AM Total Pages: 1
 SCC SECTION CORNER CERTIFICATES
 Recording Fee: \$ 7.00
 Shirley Troyna, Recorder, Chickasaw County Iowa



Prepared by: Erdman Engineering, P.C., 708 Commerce Drive, P.O. Box 246, Decorah, Iowa, (563)382-4194

UNITED STATES PUBLIC LAND SURVEY CORNER CERTIFICATE
 OF

Land Survey Monuments situated in Section 20, Township 95 North, Range 13 West, of
 the Fifth Principal Meridian, Chickasaw County, Iowa, Previously recorded in does not apply in the
 County Recorder's Office.

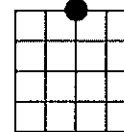
Monument Description and Remarks:

This certificate is prepared in accordance with Section 355.11 of the Code of Iowa. No previous certificates have been filed for these corner locations.

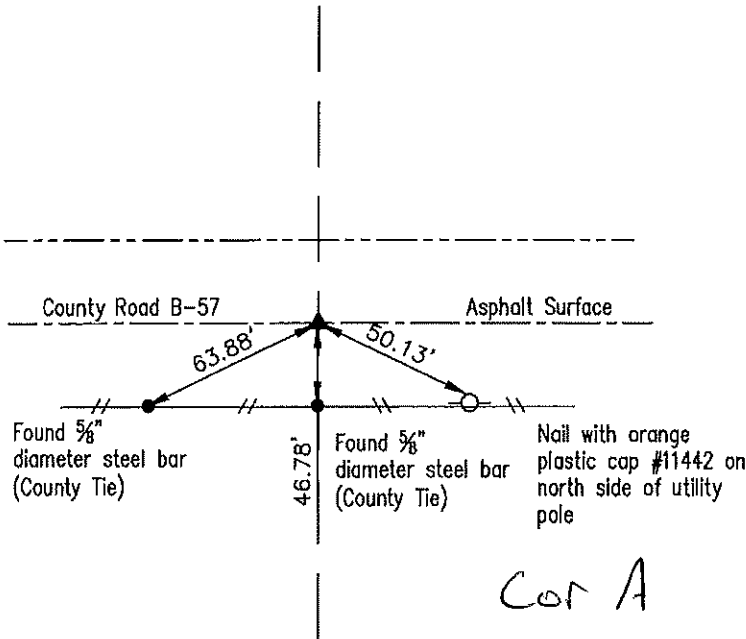
N 1/4 Corner: Chickasaw County Engineer's Reference Ties show that a P.K. nail was found at the S 1/4 Corner of Section 17 in 2008. We found two 5/8" diameter iron pins that had been used previously as tie markers. From these ties we found a P.K. nail at the approximate centerline of the county road that matches the description of the monument used previously. We used the P.K. nail as the N 1/4 Corner of Section 20, Township 95 North, Range 13 West.

PLAN-VIEW
 (NOT TO SCALE)

N 1/4 CORNER
 Found P.K. nail



SECTION 20



I hereby certify that this land surveying document was prepared and the related survey work was performed by me or under my direct personal supervision and that I am a duly licensed Land Surveyor under the laws of the State of Iowa.

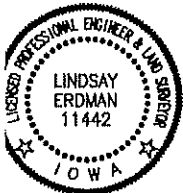
Lindsay Erdman 12/14/18
 Date

Lindsay Erdman, P.E. & P.L.S.
 Licensed Professional Land Surveyor
 Iowa License Number 11442
 My License renewal date is December 31, 2018

Pages or sheets covered by this seal: THIS SHEET ONLY

List Corner(s) to be Indexed

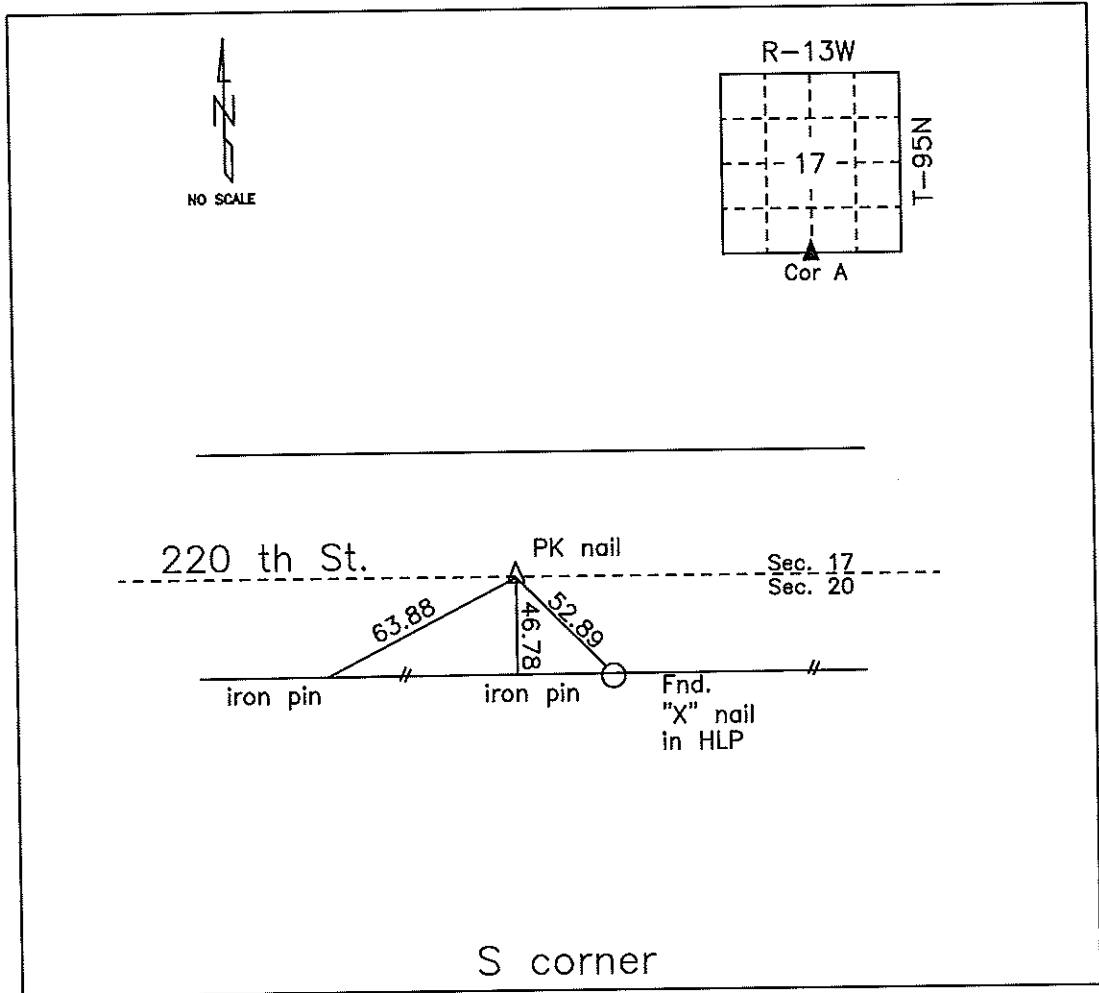
Corner(s)	Section	Township	Range
N 1/4	20	95N	13W



ERDMAN
ENGINEERING, P.C.
 CIVIL ENGINEERING & LAND SURVEYING
 Decorah, Iowa

COUNTY ENGINEER'S SECTION CORNER PRESERVATION RECORD

LAND SURVEY MONUMENT LOCATED IN SECTION 17, TOWNSHIP 95 N
NORTH, RANGE 13 W, OF THE 5TH P.M. Chickasaw COUNTY, IOWA
PREVIOUSLY RECORDED COUNTY ENGINEER'S OFFICE.



MONUMENT DESCRIPTION AND NARRATIVE Found PK nail 11/19/2008

Previously iron pin was set between fences & split miles 4/27/1962. Set 70d spk in asphalt 8/26/1969

Set PK nail 7/27/2005. Fnd PK nail 11/19/2008. Previously recorded as Sta. 339+76.8 in plans

SN-1615(4)--51-19. All ties are slope chained.

I AM NOT A REGISTERED LAND SURVEYOR UNDER THE LAWS OF THE STATE OF IOWA.

JIM FOSTER CHICKASAW CO. DATE: 11/19/08