

Instrument #: 2021-0466
 03/08/2021 11:18:40 AM Total Pages: 1
 SCC SECTION CORNER CERTIFICATES
 Recording Fee: \$ 7.00
 Shirley Troyna, Recorder, Chickasaw County Iowa



PREPARED BY/RETURN TO: MIDLAND SURVEYING, INC. 501 N. MARKET ST. MARYVILLE, MO 64468 (660) 582-8633

UNITED STATES PUBLIC LAND SURVEY CORNER CERTIFICATE

OF

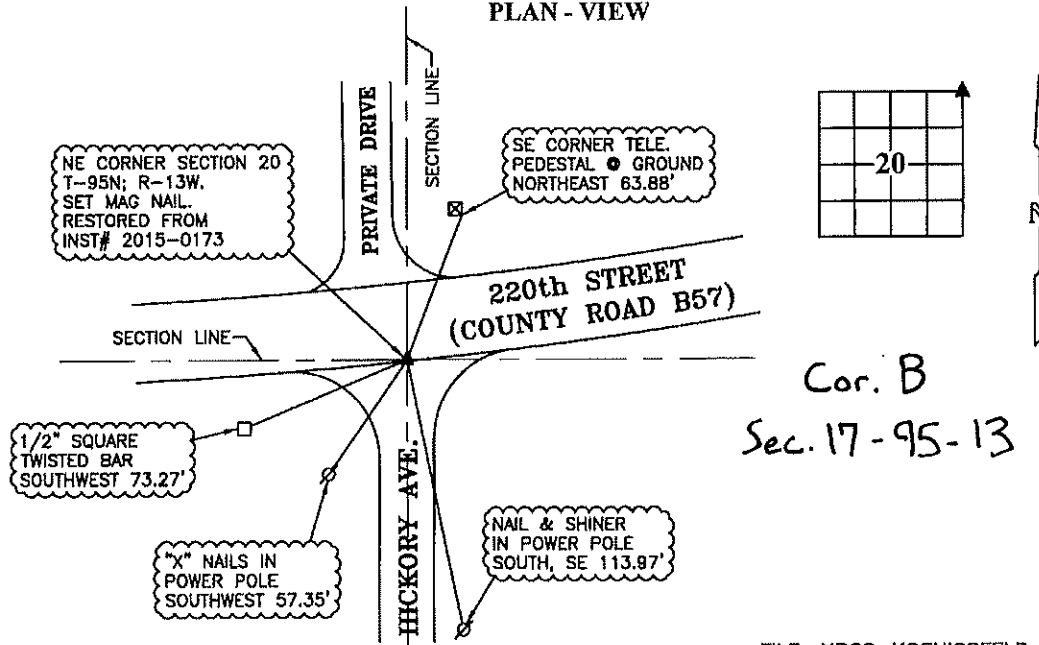
Land Survey Monuments situated in Section 20, Township T-95N, Range R-13W, of the Fifth Principal Meridian, Chickasaw County, Iowa.

RESTORED FROM SURVEY MONUMENTS FOUND TO THE EAST IN DOC #2015-0173 AND REMAINING TIES FROM BOOK 158, PAGE 442.

Monument Description and Remarks:

NE CORNER SECTION 20, T-95N; R-13W - SET MAG NAIL.

PLAN - VIEW



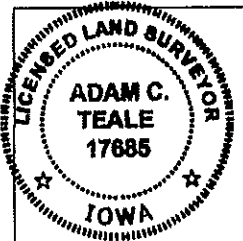
FILE: NRCS_KOENIGSFELD_C

I HEREBY CERTIFY THAT THIS LAND SURVEYING DOCUMENT WAS PREPARED AND THE RELATED SURVEY WORK WAS PERFORMED BY ME OR UNDER MY DIRECT PERSONAL SUPERVISION AND THAT I AM A DULY LICENSED PROFESSIONAL LAND SURVEYOR UNDER THE LAWS OF THE STATE OF IOWA.

A. Teale 02-0A-21
 ADAM TEALE, P.L.S. (DATE)
 LICENSE NUMBER PLS 17685
 MY LICENSE RENEWAL DATE IS DECEMBER 31, 2022
 PAGES OR SHEETS COVERED BY THIS SEAL: 1 OF 1

CORNER TO BE INDEXED
 Corner coordinates in Iowa State Plane South, NAD1983 (HARN96), U.S. Survey Feet.

Corner: NE Section: 20
 Twp: T-95N Rng: R-13W



MIDLAND SURVEYING
 LAND SURVEYORS - PLANNERS
 501 North Market, Maryville, MO 64468
 ph. (660) 582-8633 fax (660) 582-7173
 4764 Frederick Blvd., St. Joseph, MO 64506
 ph. (816) 233-7900 fax (816) 233-4851