

DOCUMENT No. 00083 FILED FOR RECORD THE 10th DAY OF STATE OF IOWA, CHICKASAW COUNTY
 RECORDING FEE \$ 6.00 July 19 96 AT 9:00 By Lyle G. TeKippe Recorder
 TRANSFER FEE \$ O'CLOCK A. M. BOOK 161 Deeds PAGE 260 By LEITHA N. ROSS Deputy

TeKIPPE ENGINEERING, P.C., 128 South Vine Street, West Union, Iowa 52175 Phone (319) 422-5131

UNITED STATES PUBLIC LAND SURVEY CORNER CERTIFICATE

OF

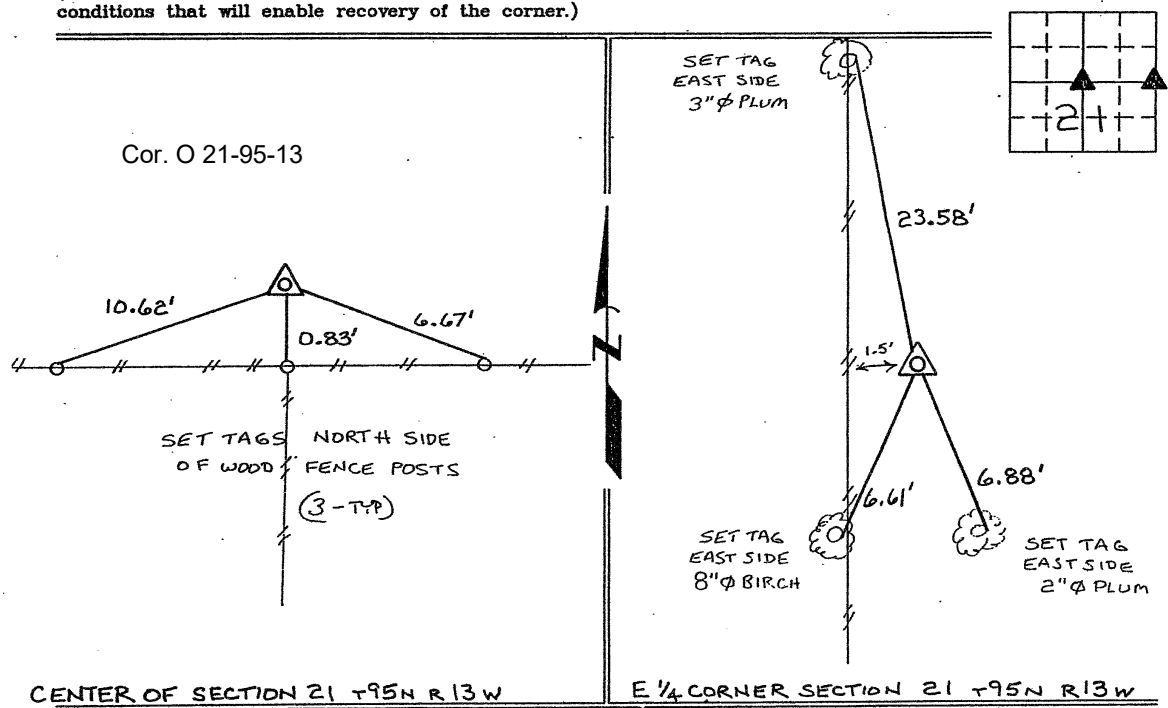
Land Survey Monuments situated in Section 21, Township 95 North, Range 13 West, of the Fifth Principal Meridian, CHICKASAW County, Iowa. Previously recorded in NONE in County Recorder's Office.
 (book, page, document number, etc.)

(Show reason for preparing this certificate, the evidence and detailed procedures used in establishing the corner positions and monumentation found or placed.)

Monument Description and Remarks: CENTER OF SECTION 21 T95N R13W :
SET 1/2" Ø REBAR w/CAP 7060 AT RECORD LOCATION, FROM A SURVEY AND PLAT MADE BY LYLE G. TEKIPPE, RECORDED JULY 24, 1990 IN DEED BOOK 145, PAGES 216-218, ON FILE IN THE CHICKASAW COUNTY RECORDERS OFFICE, NEW HAMPTON, IOWA.
E 1/4 CORNER SECTION 21 T95N R13W: FOUND 1/2" Ø REBAR w/CAP 7060, SHOWN AS SET ON A SURVEY AND PLAT MADE BY LYLE G. TEKIPPE, RECORDED JULY 24, 1990, DEED BOOK 145, PAGES 216-218, ON FILE IN THE CHICKASAW COUNTY RECORDERS OFFICE, NEW HAMPTON, IOWA.

PLAN - VIEW

(Show a minimum of three reference ties to durable physical objects, relevant monuments and physical conditions that will enable recovery of the corner.)



I hereby certify that the survey work was completed and this certificate was prepared by me or under my direct personal supervision and that I am a duly registered land surveyor under the laws of the state of Iowa.

Signature: Lyle G. TeKippe
 Lyle G. TeKippe
 Date: 7-2-96 Reg. No. 7060
 My Registration Renewal Date is December 31, 1996

List Corners to be Indexed			
Corners	Section	Twp.	Range
CENTER	21	95N	13W
E 1/4	21	95N	13W



BOOK 161 PAGE 260

161-260