

TeKIPPE ENGINEERING, P.C., 128 South Vine Street, West Union, Iowa 52176 Phone (563) 422-6131

UNITED STATES PUBLIC LAND SURVEY CORNER CERTIFICATE

OF

Land Survey Monuments situated in Section 21, Township 95 North, Range 13 West of the Fifth Principal Meridian, CHICKASAW County, Iowa.

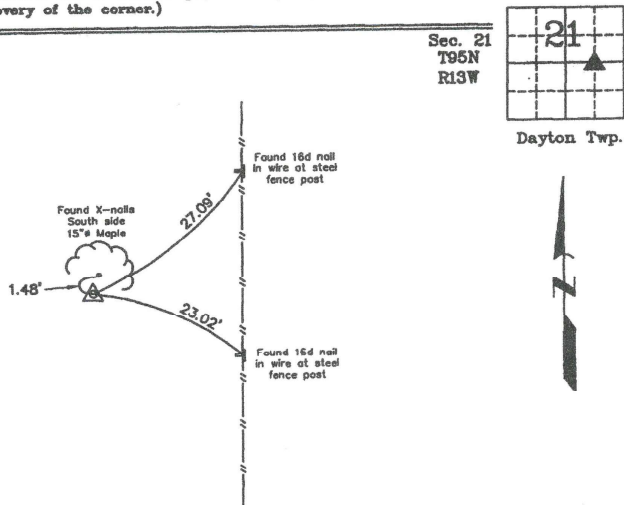
Previously recorded in none in County Recorder's Office.
(book, page, document number, etc.)

(Show reason for preparing this certificate, the evidence and detailed procedures used in establishing the corner positions and monumentation found or placed.)

Monument Description and Remarks: SW Corner SE 1/4 - NE 1/4 Section 21 T95N R13W:
Found 1/2"Ø rebar w/orange plastic cap LS 7060 with information obtained from a
Survey and Plat made by Lyle G. TeKippe recorded in the Chickasaw County Recorder's
Office July 24, 1990 in Book 145, Pages 216-218.

PLAN - VIEW

(Show a minimum of three reference ties to durable physical objects, relevant monuments and physical conditions that will enable recovery of the corner.)



Cor. Q 21-95-13

SW Corner SE 1/4 - NE 1/4 Section 21 T95N R13W
 Found 1/2"Ø rebar w/orange plastic cap LS 7060



I hereby certify that this land surveying document was prepared and the related survey work was performed by me or under my direct personal supervision and that I am a duly Licensed Land Surveyor under the laws of the State of Iowa.

Lyle G. TeKippe 12-12-03
 Lyle G. TeKippe Date

License number 7060
 My license renewal date is December 31, 2004.
 Sheets covered by this seal: Individual

List Corners to be Indexed

Corners	Section	Twp.	Range
SW-SE-NE	21	95N	13W

X:\Section Corners\Sec. 21\21-95-13n.dwg
 Project Number 03202.LS
 FB. 31 PG. 42-45