

UNITED STATES PUBLIC LAND SURVEY CORNER CERTIFICATE

Land Survey Monuments situated in:
 Section 21, Township 95 North, Range 13 West of the Fifth Principal Meridian,
CHICKASAW County, Iowa. Previously recorded in NONE
(book, page, document number, etc.)
 in County Recorder's Office.

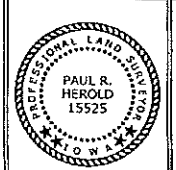
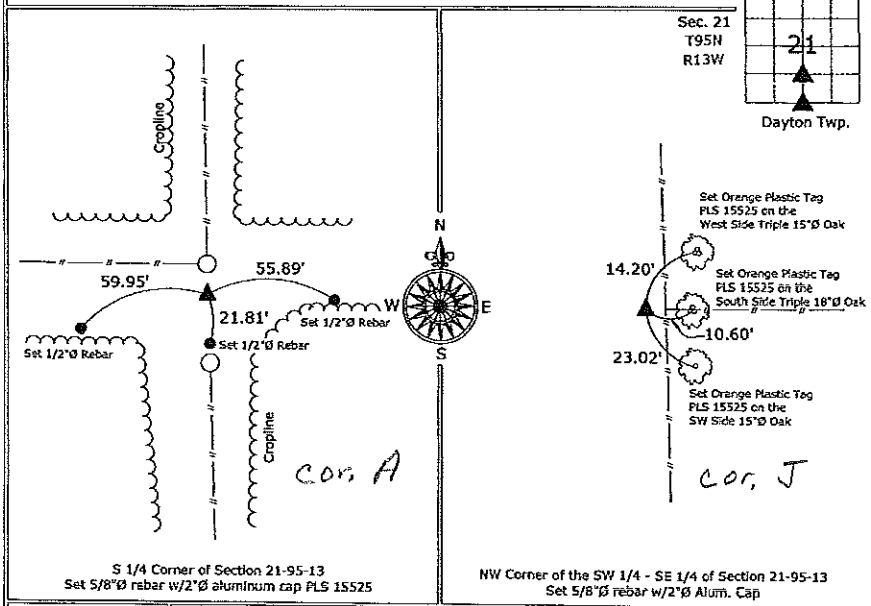
(Show reason for preparing this certificate, the evidence and detailed procedures used in establishing the corner positions and monumentation found or placed.)

Monument Description and Remarks:
 S 1/4 Corner of Section 21-95-13, Set 5/8"Ø rebar w/2"Ø aluminum cap PLS 15525, from information on a survey and plat made by Harold D. Blessing, Recorded June 27, 1978, in Book 118, Pages 71-72, set by drilling a hole in the concrete base on the south side of an existing fence corner and setting a monument, there are no records of the perpetuation of a monument at this corner location.

NW Corner of the SW 1/4 - SE 1/4 of Section 21-95-13, Set 5/8"Ø rebar w/2"Ø Alum. Cap, midway and on line between the S 1/4 Corner and the Center of Section.

PLAN - VIEW

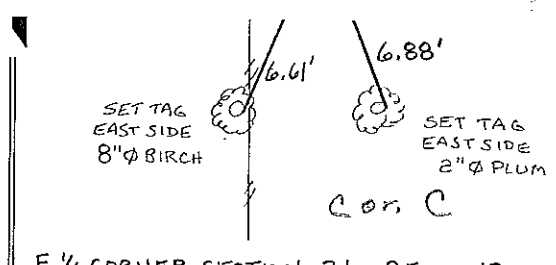
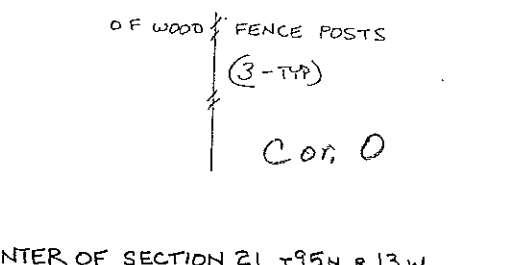
(Show a minimum of three reference ties to durable physical objects, relevant monuments and physical conditions that will enable recovery of the corner.)



I hereby certify that this land surveying document was prepared and the related survey work was performed by me or under my direct personal supervision and that I am a duly licensed Land Surveyor under the laws of the State of Iowa.
 Paul R. Herold Date: 10-2-07
 License number 15525
 My license renewal date is December 31, 2008.
 Sheets covered by this seal: Individual sheet only

List Corners to be Indexed			
Corners	Section	Twp.	Range
S 1/4	21	95	13
NW-SW-SE	21	95	13

Project Number: 2007-100
 FB: Chickasaw County 1, Pgs. 36-37



CENTER OF SECTION 21 T95N R13W

E 1/4 CORNER SECTION 21 T95N R13W

I hereby certify that the survey work was completed and this certificate was prepared by me or under my direct personal supervision and that I am a duly registered land surveyor under the laws of the state of Iowa.

Signature: Lyle G. TeKippe
 Lyle G. TeKippe
 Date: 7-2-96 Reg. No. 7060
 My Registration Renewal Date is December 31, 1996



List Corners to be Indexed			
Corners	Section	Twp.	Range
CENTER	21	95N	13W
Center	21	95	13
E 1/4	21	95N	13W
Corner C	21-95-13		

Placed in the Book
 7/10/96