

Chickasaw Co. Recorder
 Cindy Messersmith
Fee Book 2007-1953
 10/04/2007 @1132AM
 SCC: SEC COR CERT
 Book: Page: # Pages: 1
 Total Fees: \$7.00

Herold - Reicks Surveying, 25 1/2 East Main Street, Suite 204, New Hampton, IA 50659, Ph: 641-394-2725

UNITED STATES PUBLIC LAND SURVEY CORNER CERTIFICATE

Land Survey Monuments situated in:

Section 21, Township 95 North, Range 13 West of the Fifth Principal Meridian,
CHICKASAW County, Iowa. Previously recorded in 1.) Book 161, Page 260
 in County Recorder's Office. 2.) None

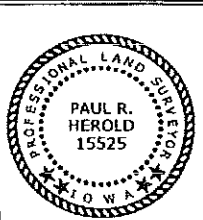
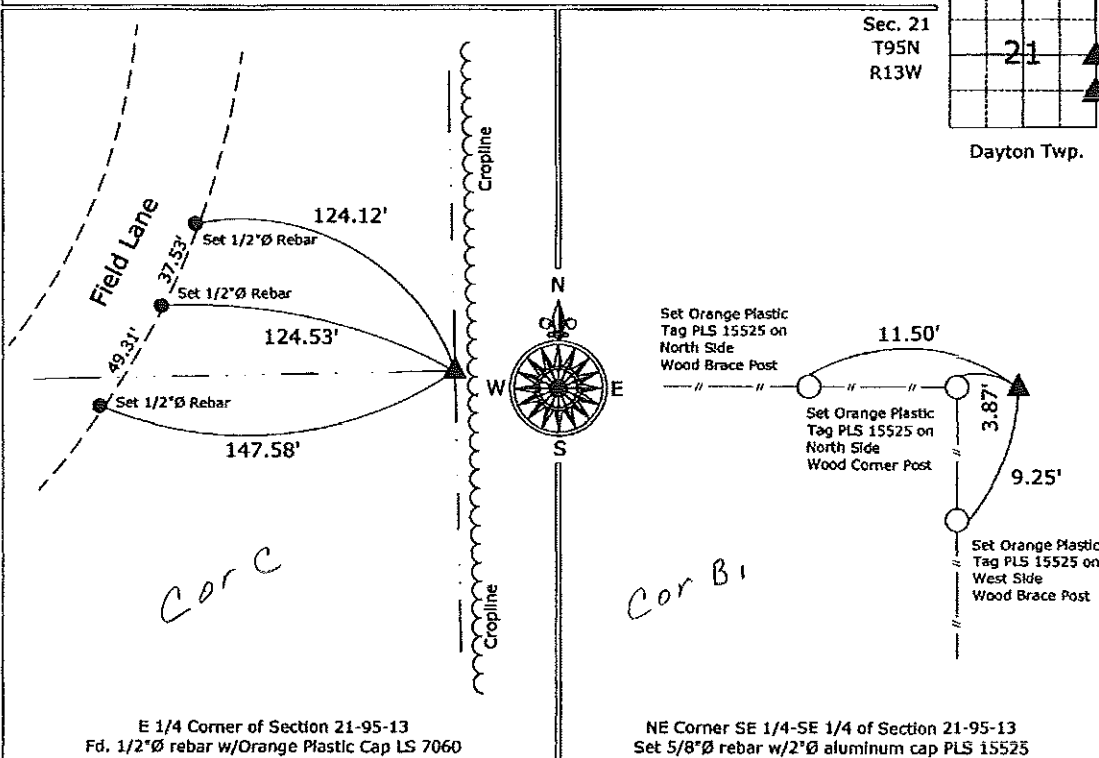
(Show reason for preparing this certificate, the evidence and detailed procedures used in establishing the corner positions and monumentation found or placed.)

Monument Description and Remarks:

- 1.) E 1/4 Corner of Section 21-95-13, Fd. 1/2"Ø rebar w/Orange Plastic Cap LS 7060 from information on the previous Section Corner Certificate, the fence and all ties were removed, added 3 new ties to update corner.
- 2.) NE Corner SE 1/4-SE 1/4 of Section 21-95-13, Set 5/8"Ø rebar w/2"Ø aluminum cap PLS 15525, midway and on line between the SE corner and the E 1/4 Corner of the Section.

PLAN - VIEW

(Show a minimum of three reference ties to durable physical objects, relevant monuments and physical conditions that will enable recovery of the corner.)



I hereby certify that this land surveying document was prepared and the related survey work was performed by me or under my direct personal supervision and that I am a duly licensed Land Surveyor under the laws of the State of Iowa.
Paul R. Herold 10-2-07
 Paul R. Herold Date:
 License number 15525
 My license renewal date is December 31, 2008.
 Sheets covered by this seal: Individual sheet only

List Corners to be Indexed			
Corners	Section	Twp.	Range
E 1/4	21	95	13
NE-SE-SE	21	95	13

Project Number: 2007-100
 FB: Chickasaw County 1, Pgs. 36-37

File: S:\Projects\2007\2007-100\dwg\2007-100.dwg, 10/2/2007 2:15:12 PM