

Prepared by & Return to: Herold - Reicks Surveying, 10 East Main Street, New Hampton, IA 50659, Ph. 641-394-2725

UNITED STATES PUBLIC LAND SURVEY CORNER CERTIFICATE

Land Survey Monuments situated in Section 21, Township 95 North, Range 13 West of the Fifth Principal Meridian, Chickasaw County, Iowa. 1.) Previously recorded in Bk. 160, Pg.253 in the County Recorder's office. 2.) Previously not recorded in the County Recorder's office.

This certificate is being prepared in compliance with Iowa Code Chapter 355.11 because:

- 2 There is no certificate on file for this corner.
- There are no longer three valid ties of record.
- 1 There are changes to reference ties of record.
- 1 There is change of monumentation of record.
- To clarify description of record monument (ties).

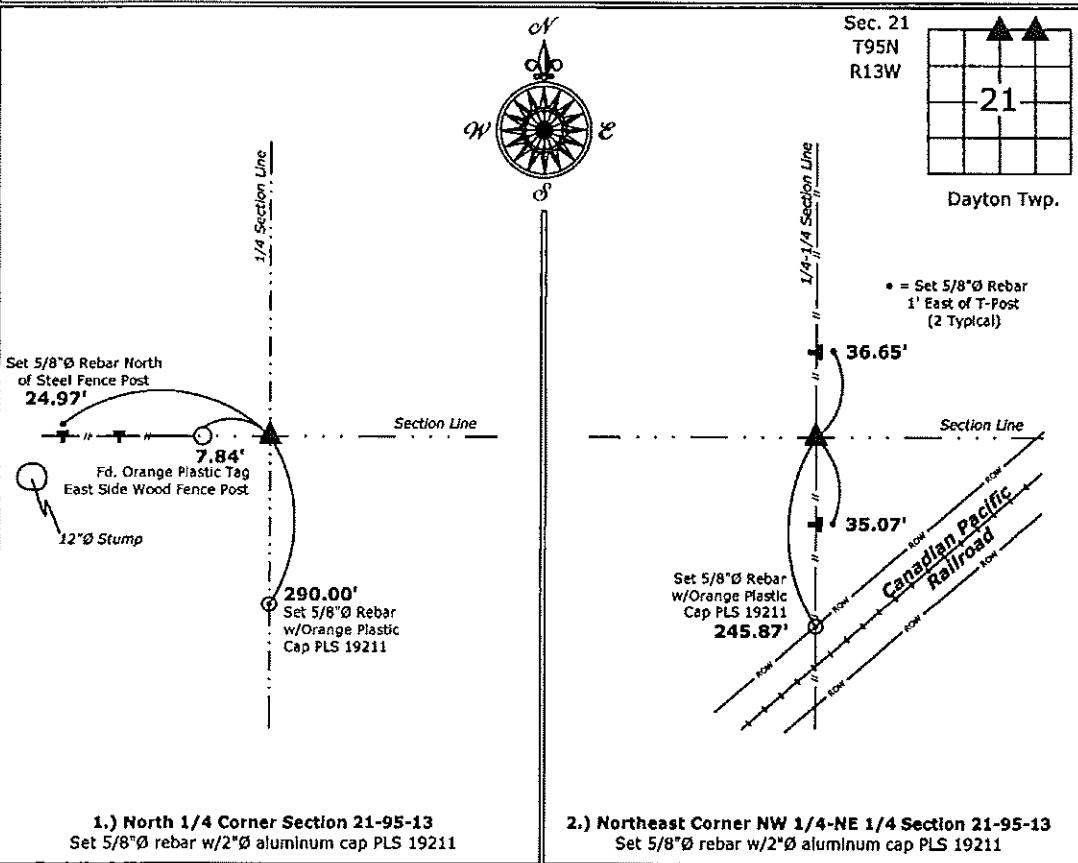
Monument Description and Remarks:

1.) North 1/4 Corner: Previous monument was obliterated due to farming operations. Set 5/8"Ø rebar with 2"Ø aluminum cap PLS 19211 at previous location by means of coordinates obtained from a previous Survey and Plat made by Paul R. Herold, recorded December 4, 2012, Doc. #2012-2435 on file in the County Recorders Office. (Coordinates on file at the office of Herold-Reicks Surveying, New Hampton, Iowa)

2.) Northeast Corner NW 1/4-NE 1/4: Set 5/8"Ø rebar with 2"Ø aluminum cap PLS 19211 equidistant and online between the North 1/4 and Northeast Corners of Section 21.

PLAN - VIEW

(Show a minimum of three reference ties to durable physical objects, relevant monuments and physical conditions that will enable recovery of the corner.)



1.) North 1/4 Corner Section 21-95-13
 Set 5/8"Ø rebar w/2"Ø aluminum cap PLS 19211

2.) Northeast Corner NW 1/4-NE 1/4 Section 21-95-13
 Set 5/8"Ø rebar w/2"Ø aluminum cap PLS 19211



I hereby certify that this land surveying document was prepared and the related survey work was performed by me or under my direct personal supervision and that I am a duly licensed Land Surveyor under the laws of the State of Iowa.

Kirk D. Reicks 1-14-15
 Kirk D. Reicks Date:

License number 19211
 My license renewal date is December 31, 2016.
 Sheets covered by this seal: Individual sheet only

List Corners to be Indexed			
Corners	Section	Twp.	Range
N 1/4	21	95	13
NE-NW-NE	21	95	13

Project Number: 2014-261
 FB: Chickasaw County 7, Pgs. 19-20

File: S:_CSD Projects\County Systems\CHICKASAW\CHICK-34\CHICK-34.dwg, 1/13/2015 11:23:05 AM

Section 16-95-13
As referred to in
Engr. Tie Book

TeKIPPE ENGINEERING, P.C., 128 South Vine Street, West Union, Iowa 52175 Phone (319) 422-5131

UNITED STATES PUBLIC LAND SURVEY CORNER CERTIFICATE

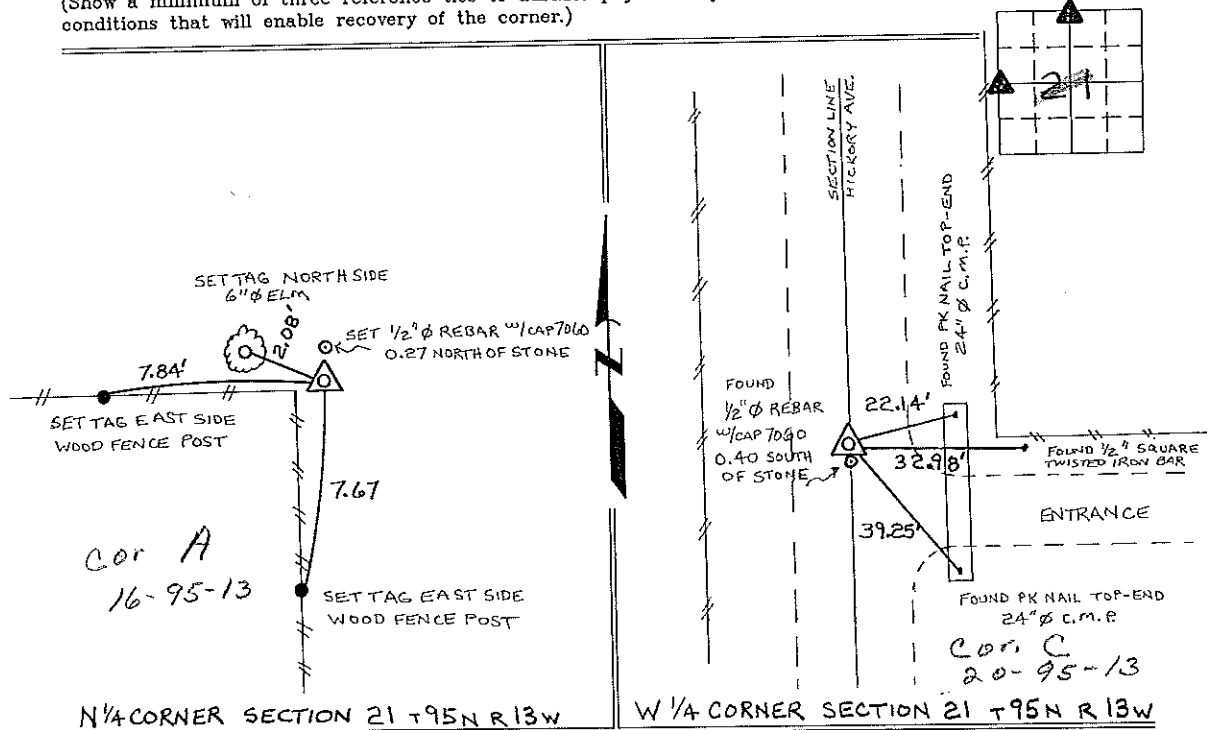
OF 16
Land Survey Monuments situated in Section 21, Township 95 North, Range 13 West, of the Fifth Principal Meridian, CHICKASAW County, Iowa.
Previously recorded in W 1/4 COR. BOOK 158, PAGE 442 / N 1/4 COR. NONE in County Recorder's Office.
(book, page, document number, etc.)

(Show reason for preparing this certificate, the evidence and detailed procedures used in establishing the corner positions and monumentation found or placed.)

Monument Description and Remarks: N 1/4 CORNER SECTION 21 T 95 N R 13 W: FOUND A 12"x7"x12" GRANITE STONE w/ CUT "X" ON TOP, SET 1/2" φ REBAR 0.27' NORTH, STONE WAS USED ON A SURVEY AND PLAT MADE BY LYLE G. TEKIPPE RECORDED JULY 24, 1990, BOOK 145, PAGES 214-216, AND USED IN A DEED DESCRIPTION RECORDED SEPT. 12, 1990, BOOK 145 PAGE 351, CHICK. CO. RECORDERS OFFICE.
- W 1/4 CORNER SECTION 21, T 95 N R 13 W: FOUND C "x 2" GRANITE STONE w/ 1/2" φ REBAR w/ CAP 7060 0.40' SOUTH ORIGINAL CERTIFICATE (E 1/4 COR, SEC. 20, BOOK 158, PAGE 442) NEGLECTED TO SHOW THE LOCATION OF THE WITNESS BAR.

PLAN - VIEW

(Show a minimum of three reference ties to durable physical objects, relevant monuments and physical conditions that will enable recovery of the corner.)



I hereby certify that the survey work was completed and this certificate was prepared by me or under my direct personal supervision and that I am a duly registered land surveyor under the laws of the state of Iowa.

Signature: Lyle G. TeKippe
Lyle G. TeKippe

Date: 3-13-96 Reg. No. 7060
My Registration Renewal Date is December 31, 1996

Seal



List Corners to be Indexed			
Corners	Section	Twp.	Range
N 1/4	21	95 N	13 W
W 1/4	21	95 N	13 W

Placed in Tie Book 3/22/96 JFM