

Section 16-95-13
 As referred to in
 Engg. Tie Book

TeKIPPE ENGINEERING, P.C., 128 South Vine Street, West Union, Iowa 52175 Phone (319) 422-6131

UNITED STATES PUBLIC LAND SURVEY CORNER CERTIFICATE

OF

Land Survey Monuments situated in Section 21 ¹⁶, Township 95 North, Range 13 West, of the Fifth Principal Meridian, CHICKASAW County, Iowa. Previously recorded in NONE in County Recorder's Office.

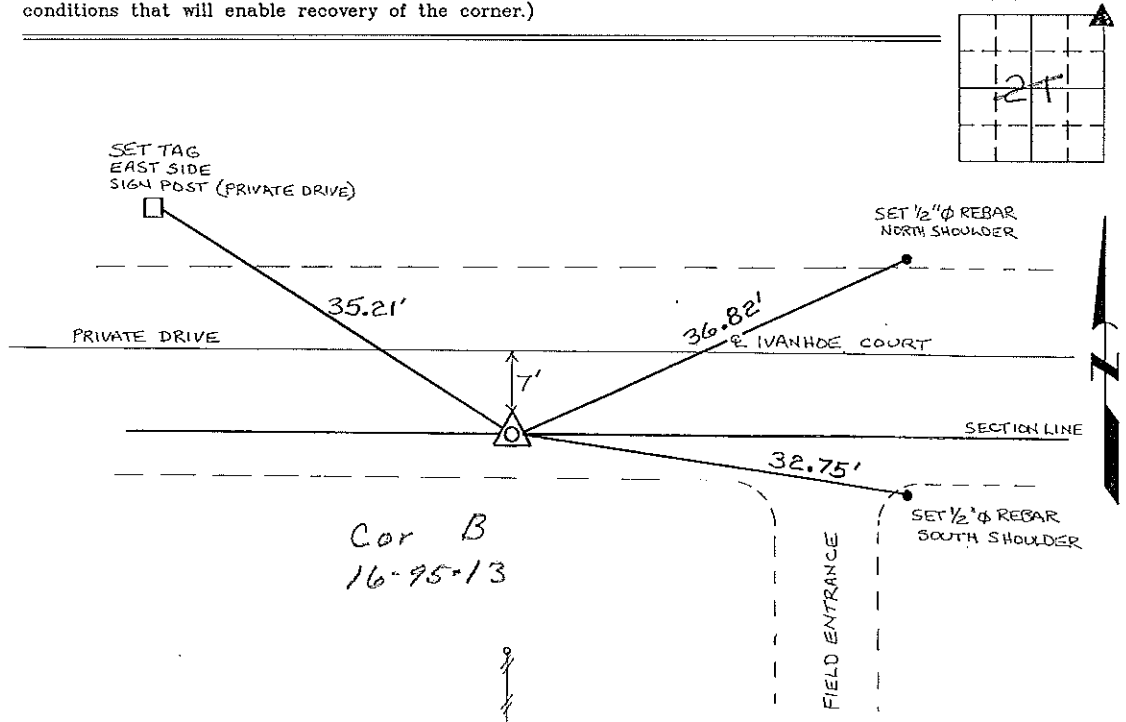
(book, page, document number, etc.)

(Show reason for preparing this certificate, the evidence and detailed procedures used in establishing the corner positions and monumentation found or placed.)

Monument Description and Remarks: NE CORNER SECTION 21 T95N R13W:
FOUND 5/8" Ø REBAR AS SHOWN ON A SURVEY AND PLAT MADE BY LYLE G. TEKIPPE,
RECORDED JULY 24, 1990, DEED BOOK 145, PAGES 216-218, ON FILE IN THE CHICKASAW
COUNTY RECORDERS OFFICE, NEW HAMPTON, IOWA.

PLAN - VIEW

(Show a minimum of three reference ties to durable physical objects, relevant monuments and physical conditions that will enable recovery of the corner.)



I hereby certify that the survey work was completed and this certificate was prepared by me or under my direct personal supervision and that I am a duly registered land surveyor under the laws of the state of Iowa.

Signature: Lyle G. TeKippe
 Lyle G. TeKippe

Date: 7-2-96 Reg. No. 7080

My Registration Renewal Date is December 31, 1998

Seal



List Corners to be Indexed			
Corners	Section	Twp.	Range
NE	21	95N	13W

Corner B 16-95-13

Placed in tie
 Book 7/10/96
 JPM

161-261

"County Engineers Conv"