

CINDY MESSERSMITH
 COUNTY RECORDER

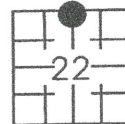
Prepared by: Erdman Engineering, P.C., 708 Commerce Drive, P.O. Box 246, Decorah, Iowa 52101 (563) 382-4194

United States Public Land Survey Corner Certificate
 of

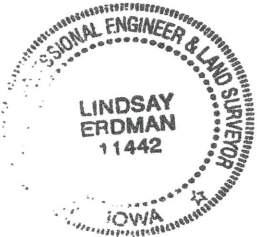
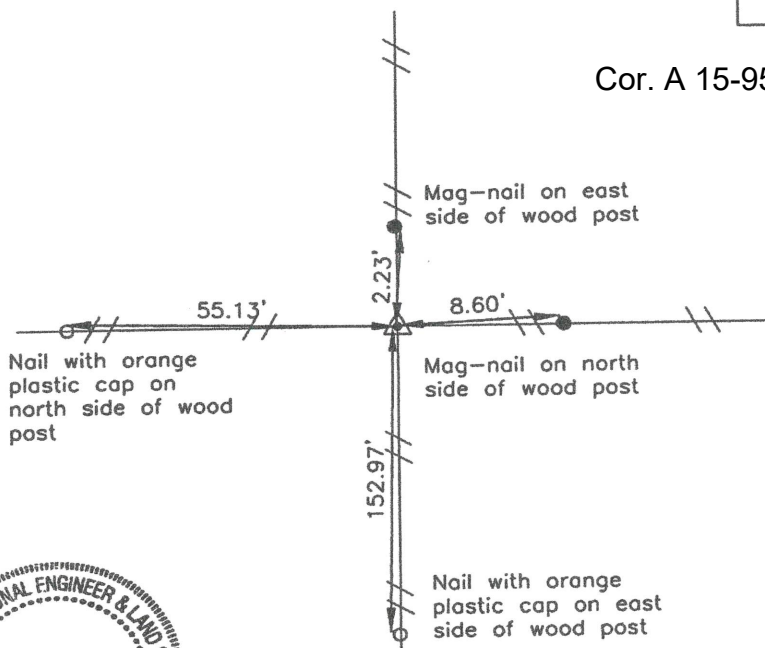
Land Survey Monuments situated in Section 22, Township 95, Range 13 West of the 5th Principal Meridian in Chickasaw County, Iowa. Previously recorded in does not apply in the county Recorder's Office.

Monument Description and Remarks: This certificate is prepared in accordance with Section 193C of the Code of Iowa. No previous certificate has been filed for this corner location. We found no record of the N 1/4 Corner being set. We found no evidence of a monument in the field other than an existing fence corner with fence lines running north, south, east, and west. We found the NW Corner and the NE Corner. We computed a point on-line midway between the NW Corner and the N 1/4 Corner. This point is ±26' south of the fence corner. Based on this we set a 1/2" diameter steel bar with 1 1/2" aluminum cap #11442 midway between the NE Corner and the NW Corner and at the existing fence corner as the N 1/4 Corner of Section 22, Township 95 North, Range 13 West. The record distance from the NW Corner to the N 1/4 Corner from Chickasaw County Engineer's Reference Ties is 39.22 chains (2588.52'). The measured distance from the NW Corner to the N 1/4 Corner is 2589.70'.

Plan-View



Cor. A 15-95-13



I hereby certify that this land surveying document was prepared and the related survey work was performed by me or under my direct personal supervision and that I am a duly licensed Land Surveyor under the laws of the State of Iowa.

Signature Lindsay Erdman
 Lindsay Erdman, P.E. and P.L.S. Iowa License Number 11442

Date: 5/17/05

My license renewal date is December 31, 2006

Corner(s) to be Indexed

Corner	Section	Township	Range
N 1/4	22	95	13