

Section 14-95-13  
As referred to in  
Engl Tie Book

FILED 2003 - 3491

RECORDER'S OFFICE  
CHICKASAW COUNTY, IOWA

Fee \$11.00  
2003 NOV 14 AM 9 25

CINDY MESSERSMITH  
COUNTY RECORDER

TEKIPPE ENGINEERING, P.C., 128 South Vine Street, West Union, Iowa 52175 Phone (563) 422-6131

UNITED STATES PUBLIC LAND SURVEY CORNER CERTIFICATE

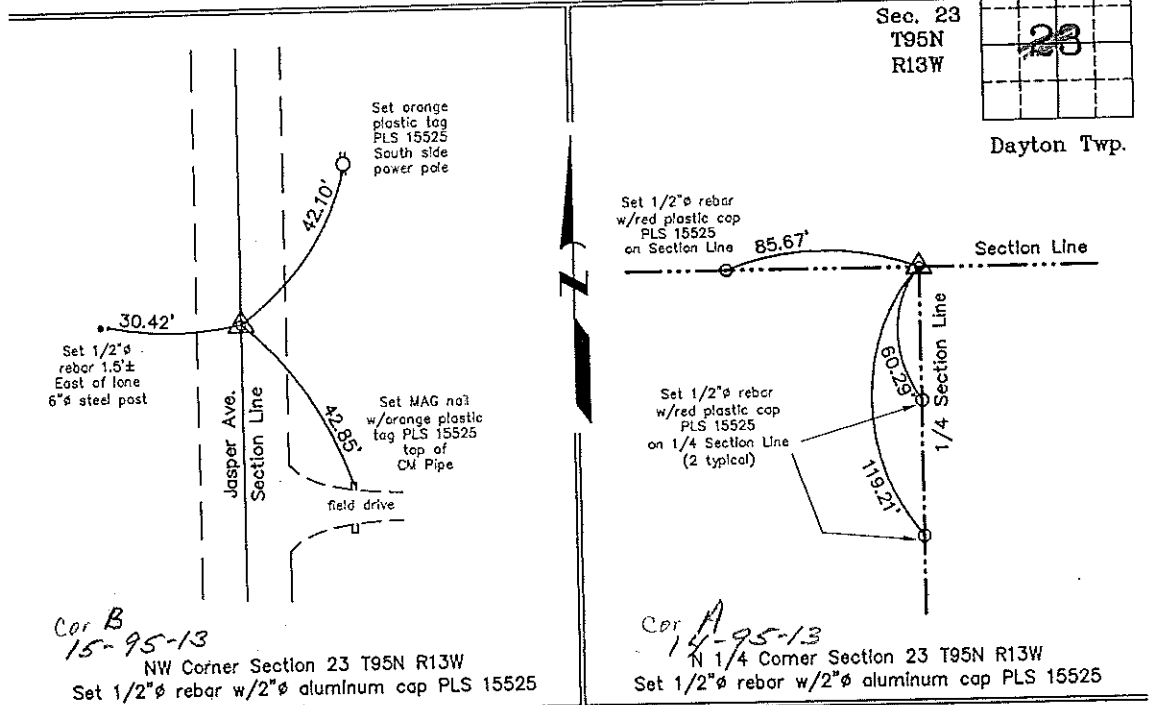
OF  
Land Survey Monuments situated in Section 23, Township 95 North, Range 13 West of the Fifth Principal Meridian, CHICKASAW County, Iowa. Previously recorded in (1) Book 148 Page 495 (2) none in County Recorder's Office.  
(book, page, document number, etc.)

(Show reason for preparing this certificate, the evidence and detailed procedures used in establishing the corner positions and monumentation found or placed.)

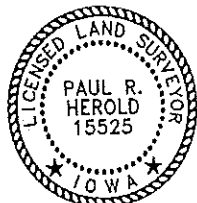
Monument Description and Remarks: **(1) NW Corner Section 23 T95N R13W:** Found 16d nail with information obtained from the previous Section Corner Certificate recorded in the Chickasaw County Recorder's Office in Book 148, Page 495. Replaced 16d nail with 1/2"Ø rebar w/2"Ø aluminum cap PLS 15525.  
**(2) N 1/4 Corner Section 23 T95N R13W:** Set 1/2"Ø rebar w/2"Ø aluminum cap PLS 15525 by extending a line North from the S 1/4 Corner through a fence near the Center of the Section and intersecting a line extended from the NE Corner through a position calculated from a Plat of Survey recorded in the Chickasaw County Recorder's Office in Book 111, Pages 27-28.

PLAN - VIEW

(Show a minimum of three reference ties to durable physical objects, relevant monuments and physical conditions that will enable recovery of the corner.)



I hereby certify that this land surveying document was prepared and the related survey work was performed by me or under my direct personal supervision and that I am a duly licensed Land Surveyor under the laws of the State of Iowa.



*Paul R. Herold* 11-12-03  
Paul R. Herold Date  
License number 15525  
My license renewal date is December 31, 2004.  
Sheets covered by this seal: Individual

List Corners to be Indexed			
Corners	Section	Twp.	Range
NW	23	95N	13W
N 1/4	23	95N	13W

Filed 12-15-03

X:\Section Corners\Sec. 23\23-95-13ac.dwg