

Herold - Reicks Surveying, 18 East Main Street, New Hampton, IA 50658, Ph. 641-394-2725, Fax. 641-394-2719

### UNITED STATES PUBLIC LAND SURVEY CORNER CERTIFICATE

Land Survey Monuments situated in Section 23, Township 95 North, Range 13 West of the Fifth Principal Meridian, Chickasaw County, Iowa. 1. & 2. Previously not recorded in the County Recorder's office.

This certificate is being prepared in compliance with Iowa Code Chapter 355.11 because:

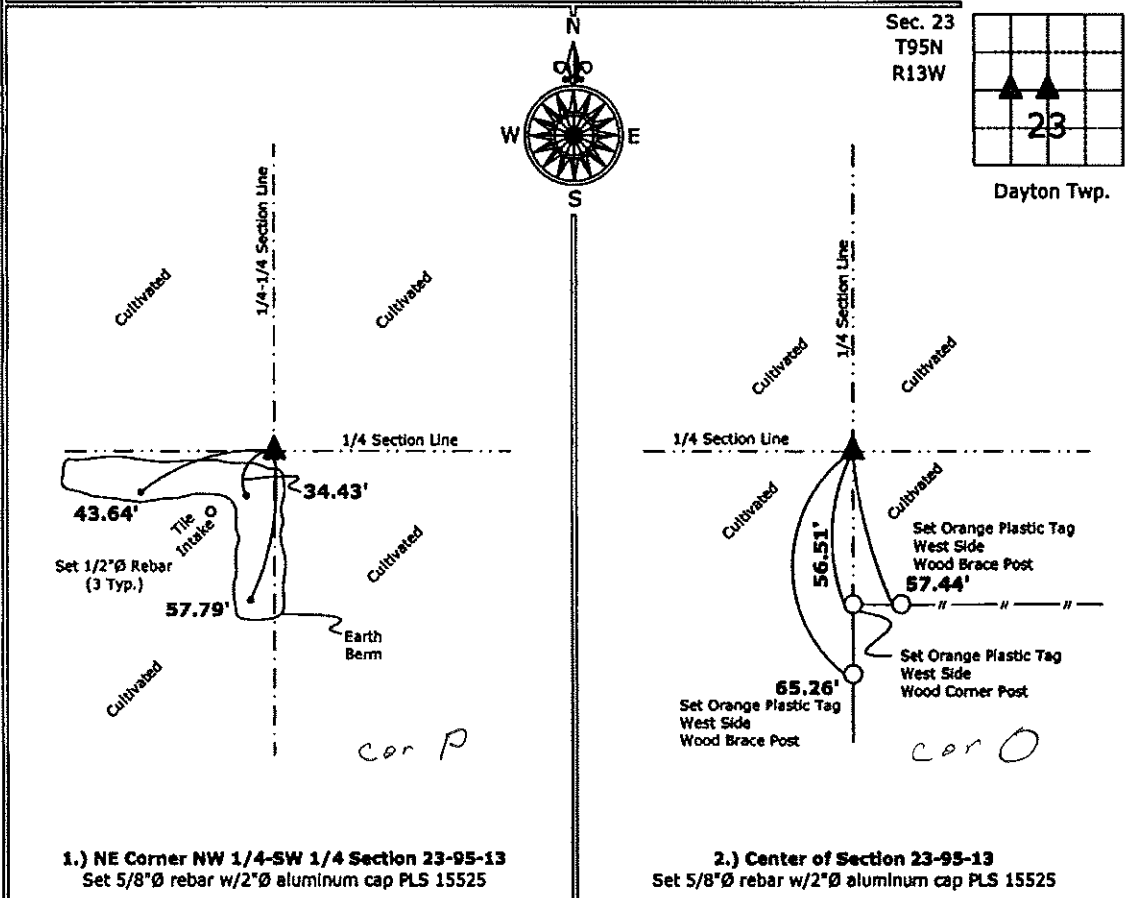
- 1.) & 2.)  There are no certificates on file for these corners.
- There are no longer three valid ties of record.
- There are changes to reference ties of record.
- There is change of monumentation of record.
- To clarify description of record monument (ties).

**Monument Description and Remarks:**

- 1.) **NE Corner NW 1/4-SW 1/4:** Set 5/8"Ø rebar w/2"Ø rebar equidistant and online between the Center and the West 1/4 corners of section.
- 2.) **Center of Section:** Set 5/8"Ø rebar w/2"Ø aluminum cap at the intersection of the Quarter Section Lines, Corner was set 18" Deep, falls in cultivated field.

#### PLAN - VIEW

(Show a minimum of three reference ties to durable physical objects, relevant monuments and physical conditions that will enable recovery of the corner.)



1.) NE Corner NW 1/4-SW 1/4 Section 23-95-13  
 Set 5/8"Ø rebar w/2"Ø aluminum cap PLS 15525

2.) Center of Section 23-95-13  
 Set 5/8"Ø rebar w/2"Ø aluminum cap PLS 15525



I hereby certify that this land surveying document was prepared and the related survey work was performed by me or under my direct personal supervision and that I am a duly licensed Land Surveyor under the laws of the State of Iowa.

*Paul R. Herold* 3-30-10  
 Paul R. Herold Date:  
 License number 15525  
 My license renewal date is December 31, 2010.  
 Sheets covered by this seal: Individual sheet only

List Corners to be Indexed			
Corners	Section	Twp.	Range
NE-NW-SW	23	95	13
CTR	23	95	13

Project Number: 2010-026  
 FB: Chickasaw County 2, Pgs. 35-38