

Chickasaw Co. Recorder
 Cindy Messersmith
Fee Book 2010-0463
 04/02/2010 09:17AM
 SCC SEC COR CERT
 Book: Page: # Pages: 1
 Total Fees: \$9.00

Herold - Reckas Surveying, 10 East Main Street, New Hampton, IA 50659, Ph. 641-394-2725, Fax. 641-394-2710

UNITED STATES PUBLIC LAND SURVEY CORNER CERTIFICATE

23

Land Survey Monuments situated in Section 24, Township 95 North, Range 13 West of the Fifth Principal Meridian, Chickasaw County, Iowa. 1.) Previously recorded in BK. 2000, Pg. 2058 in the County Recorder's office, 2.) Previously not recorded in the County Recorder's office.

This certificate is being prepared in compliance with Iowa Code Chapter 355.11 because:

- 2.) There is no certificate on file for this corner.
- 1.) There are no longer three valid ties of record.
- 1.) There are changes to reference ties of record.
- There is change of monumentation of record.
- To clarify description of record monument (ties).

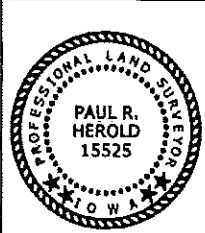
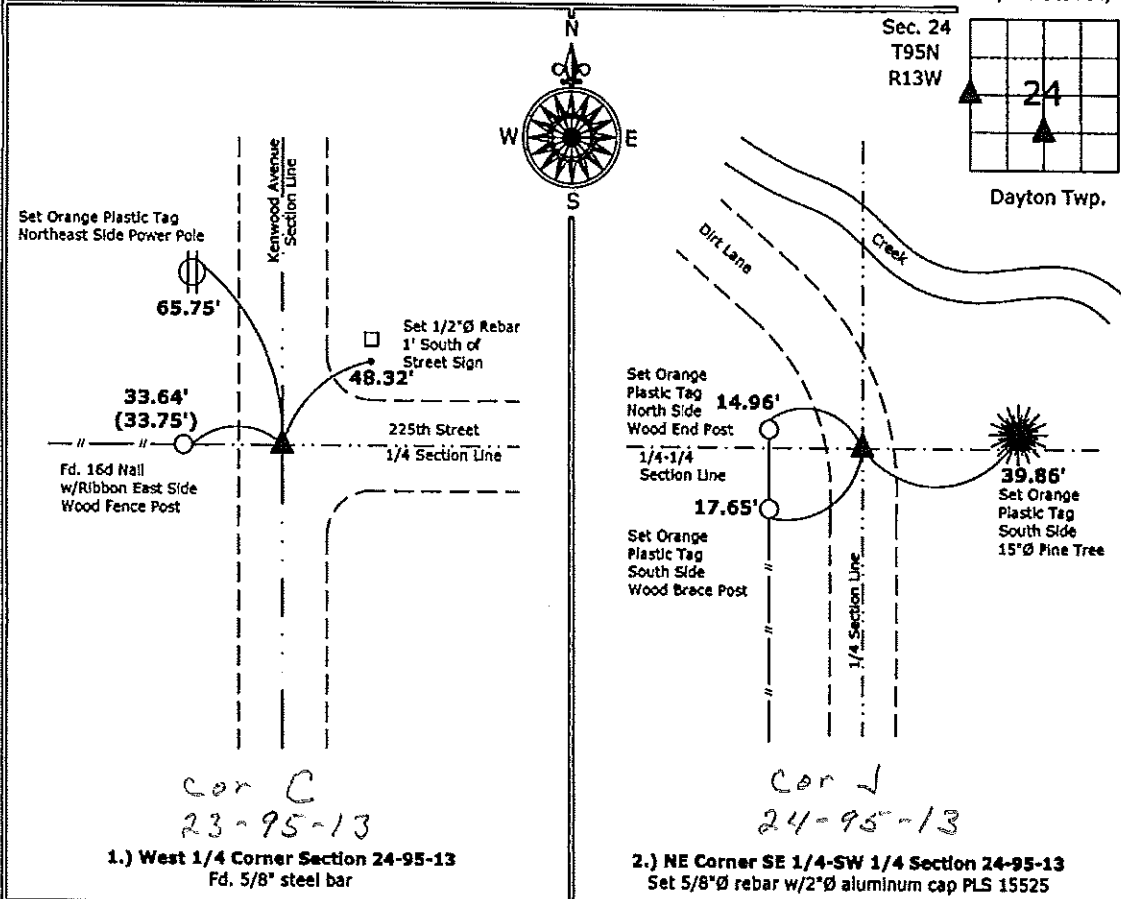
Monument Description and Remarks:

1.) West 1/4 Corner: Found 5/8"Ø steel bar from information obtained from previous Section Corner Certificate, 2 of the previous ties were missing.

2.) NE Corner SE 1/4-SW 1/4: Set 5/8"Ø rebar w/2"Ø aluminum cap PLS 15525 equidistant and online between the Center and S 1/4 corners of Section.

PLAN - VIEW

(Show a minimum of three reference ties to durable physical objects, relevant monuments and physical conditions that will enable recovery of the corner.)



I hereby certify that this land surveying document was prepared and the related survey work was performed by me or under my direct personal supervision and that I am a duly licensed Land Surveyor under the laws of the State of Iowa.

Paul R. Herold 3-30-10
 Paul R. Herold Date:
 License number 15525
 My license renewal date is December 31, 2010.
 Sheets covered by this seal: Individual sheet only

List Corners to be Indexed			
Corners	Section	Twp.	Range
W 1/4	24	95	13
NE-SE-SW	24	95	13

Project Number: 2010-026
 FB: Chickasaw County 2, Pgs. 35-38

File: S:\Projects\New Hampton\Comp\SCC.dwg, 3/30/2010 05:59:58

Section 23-95-13
As referred to in
Engr Tie Book

FILE NO. 2058
2000 PAGE 2058
Fee 6.00
200 NOV 20 AM 10:06

CINDY MESSERSWITH
CHICKASAW CO RECORDER

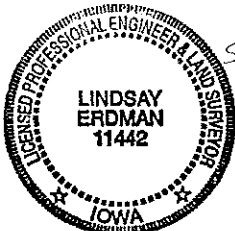
Prepared by: Erdman Engineering, P.C. 708 Commerce Drive, P.O. Box 246 Decorah, Iowa 52101, (319)382-4194

United States Public Land Survey Corner Certificate
of 23

Land Survey Monuments situated in Section 24, Township 95, Range 13 West of the 5th Principal Meridian in Chickasaw County, Iowa. Previously recorded in does not apply in the county Recorder's Office.

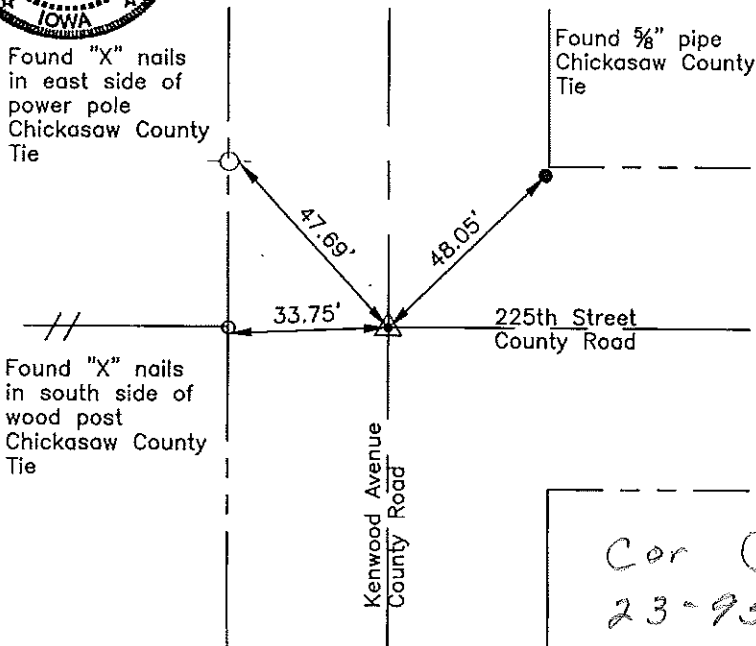
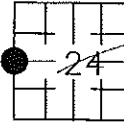
Monument Description and Remarks: This certificate is prepared in accordance with Section 193C of the Code of Iowa. No previous certificate has been filed for this corner location. Based on the Iowa Department of Transportation Acquisition Plat Recorded in Book 173 page 279 in the Chickasaw County Recorder's Office we found a 5/8" steel bar that matches the description of the monument used previously as the W 1/4 Corner of Section 24, Township 95 North, Range 13 West.

Plan-View



see file
2003-3497

C
Sec 23



Cor C
23-95-13

I hereby certify that the survey work was completed and this certificate was prepared by me or under my direct supervision and that I am a duly registered land surveyor under the laws of the State of Iowa.

Signature *Lindsay Erdman*
Lindsay Erdman, P.E. and L.S.

Date: 11/7/04 Reg. No. 11442

My license renewal date is December 31, 2000

Corner(s) to be Indexed

Corner	Section	Township	Range
W 1/4	24	95	13
C	23	95	13

Filed 12-8-00

2000-2058