

Section 14-95-13
As referred to in
Engr. Tie Book

FILED 2003-3342
RECORDER'S OFFICE
CHICKASAW COUNTY, IOWA
2003 OCT 31 AM 8 57
CINDY MESSERSMITH
COUNTY RECORDER

TeKIPPE ENGINEERING, P.C., 128 South Vine Street, West Union, Iowa 52176 Phone (563) 422-5131

UNITED STATES PUBLIC LAND SURVEY CORNER CERTIFICATE

OF
Land Survey Monuments situated in Section 24, Township 95 North, Range 13 West of the Fifth Principal Meridian, CHICKASAW County, Iowa.
Previously recorded in (1) Book 153, Page 145 (2) none in County Recorder's Office.
(book, page, document number, etc.)

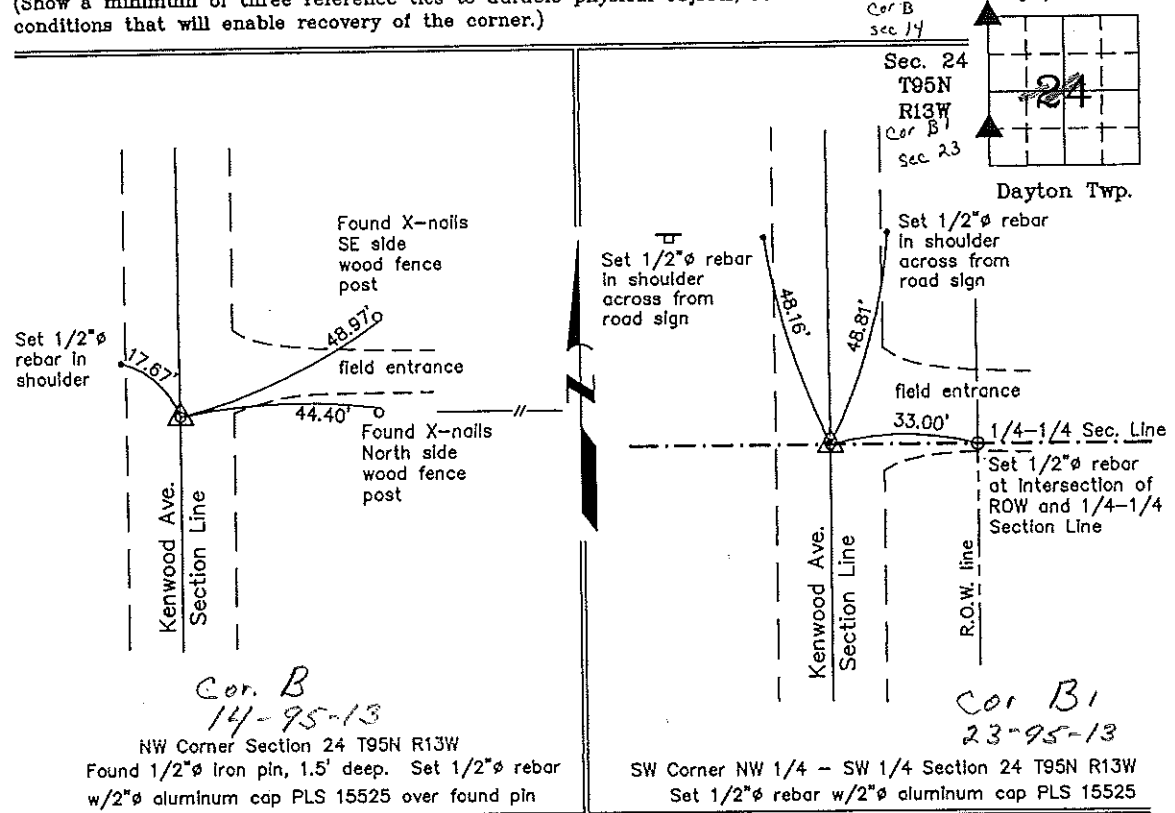
(Show reason for preparing this certificate, the evidence and detailed procedures used in establishing the corner positions and monumentation found or placed.)

Monument Description and Remarks: **(1) NW Corner Section 24 T95N R13W:** Found 1/2"φ iron pin, 1.5' deep, with information obtained from the previous Section Corner Certificate recorded in the Chickasaw County Recorder's Office in Deeds Book 153, Page 145. The spike over iron pin mentioned in the previous Certificate was not found. Placed 1/2"φ rebar w/2"φ aluminum cap PLS 15525 over found pin.
(2) SW Corner NW 1/4 - SW 1/4 Section 24 T95N R13W: Set 1/2"φ rebar w/2"φ aluminum cap PLS 15525 equidistant and on line between the W 1/4 Corner and the SW Corner.

PLAN - VIEW

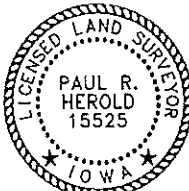
Project Number 02022.LS
FB. New Hampton 1 PG. 27-31

(Show a minimum of three reference ties to durable physical objects, relevant monuments and physical conditions that will enable recovery of the corner.)



Cor. B
14-95-13
NW Corner Section 24 T95N R13W
Found 1/2"φ iron pin, 1.5' deep. Set 1/2"φ rebar w/2"φ aluminum cap PLS 15525 over found pin

Cor. B1
23-95-13
SW Corner NW 1/4 - SW 1/4 Section 24 T95N R13W
Set 1/2"φ rebar w/2"φ aluminum cap PLS 15525



I hereby certify that this land surveying document was prepared and the related survey work was performed by me or under my direct personal supervision and that I am a duly licensed Land Surveyor under the laws of the State of Iowa.
Paul R. Herold 10-29-03
Paul R. Herold Date
License number 15525
My license renewal date is December 31, 2002.
Sheets covered by this seal: Individual

List Corners to be Indexed			
Corners	Section	Twp.	Range
NW	24	95N	13W
SW-NW-SW	24	95N	13W

Filed 12-16-03

X:\Section Corners\Sec. 24\24-95-13ap.dwg

County Engineer's
Office