

Section 14-95-13
As referred to in
Engr. Tie Book

FILED 2003-3342

RECORDER'S OFFICE
CHICKASAW COUNTY, IOWA

2003 OCT 31 AM 8 57

CINDY MESSERSMITH
COUNTY RECORDER

TeKIPPE ENGINEERING, P.C., 128 South Vine Street, West Union, Iowa 52175 Phone (563) 422-5131

UNITED STATES PUBLIC LAND SURVEY CORNER CERTIFICATE

OF
Land Survey Monuments situated in Section 24, Township 95 North, Range 13 West of the Fifth Principal Meridian, CHICKASAW County, Iowa.
Previously recorded in (1) Book 153, Page 145 (2) none in County Recorder's Office.
(book, page, document number, etc.)

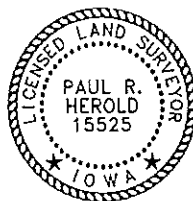
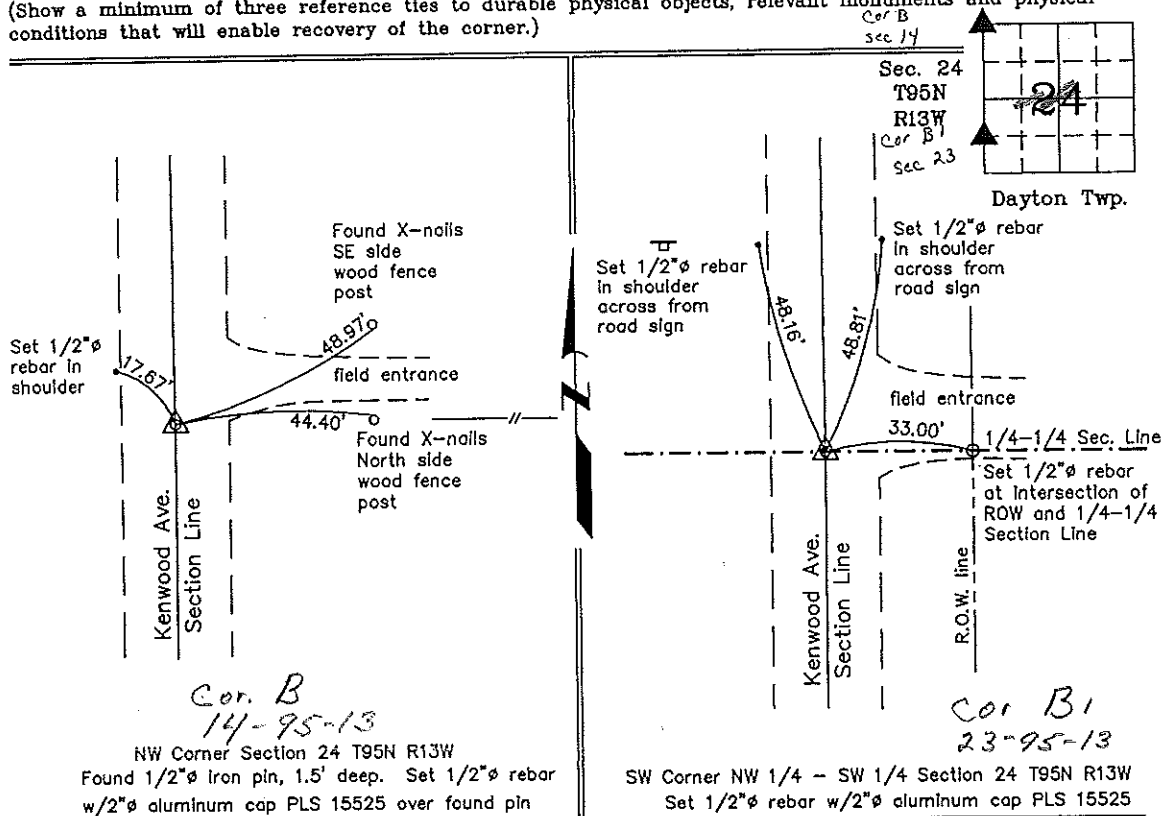
(Show reason for preparing this certificate, the evidence and detailed procedures used in establishing the corner positions and monumentation found or placed.)

Monument Description and Remarks: **(1) NW Corner Section 24 T95N R13W:** Found 1/2" ϕ iron pin, 1.5' deep, with information obtained from the previous Section Corner Certificate recorded in the Chickasaw County Recorder's Office in Deeds Book 153, Page 145. The spike over iron pin mentioned in the previous Certificate was not found. Placed 1/2" ϕ rebar w/2" ϕ aluminum cap PLS 15525 over found pin.
(2) SW Corner NW 1/4 - SW 1/4 Section 24 T95N R13W: Set 1/2" ϕ rebar w/2" ϕ aluminum cap PLS 15525 equidistant and on line between the W 1/4 Corner and the SW Corner.

PLAN - VIEW

Project Number 02022.LS
FB. New Hampton 1 PG. 27-31

(Show a minimum of three reference ties to durable physical objects, relevant monuments and physical conditions that will enable recovery of the corner.)



I hereby certify that this land surveying document was prepared and the related survey work was performed by me or under my direct personal supervision and that I am a duly licensed Land Surveyor under the laws of the State of Iowa.

Paul R. Herold 10-29-03
Paul R. Herold Date
License number 15525
My license renewal date is December 31, 2002.
Sheets covered by this seal: Individual

List Corners to be Indexed			
Corners	Section	Twp.	Range
NW	24	95N	13W
SW-NW-SW	24	95N	13W

Filed 12-16-03

X:\Section Corners\Sec. 24\24-95-13ap.dwg

County Engineer's
Office

UNITED STATES PUBLIC LAND SURVEY CORNER CERTIFICATE

OF

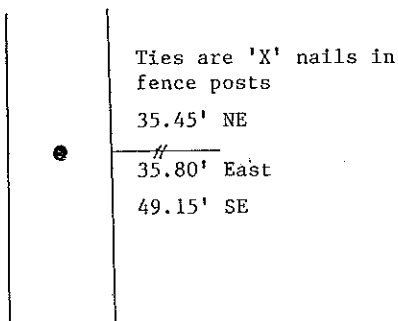
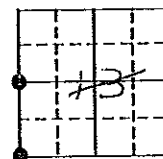
Land Survey Monuments situated in Section 15 14, Township 95 North, Range 13 West, of the Fifth Principal Meridian, Chickasaw County, Iowa. Previously recorded in N/A in County Recorder's Office.

(Show reason for preparing this certificate, the evidence and detailed procedures used in establishing the corner positions and monumentation found or placed.)
Monument Description and Remarks: Found corners as shown below. Measured in new ties.

PLAN - VIEW

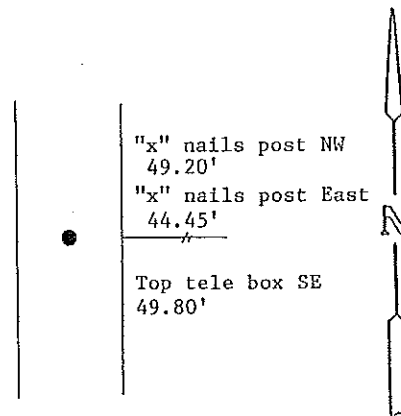
(Show a minimum of three reference ties to durable physical objects, relevant monuments and physical conditions that will enable recovery of the corner.)

*Section 14-95-13
As referred to in
Engr. Tie Book*



West 1/4 corner
Found 3/8" iron pin

*Corner C
14-95-13*



Southwest corner
Found spike over iron pin

*Cor B-
14-95-13*

I hereby certify that the survey work was completed and this certificate was prepared by me or under my direct personal supervision and that I am a duly registered land surveyor under the laws of the state of Iowa.

Signature: Steve Busse
Name typed or printed: STEVE BUSSE
Date: 10/4/93 Reg. No. 9018

MY REGISTRATION IS SUBJECT TO RENEWAL DEC. 31, 1994

SEAL

Corners	List Corners to be Indexed		
	Section	Twp	Range
SW cor.	13	95	13
West 1/4 cor.	13	95	13

*Cor B 14-95-13
Cor C 14-95-13*

*Placed in Tie Book
10/11/93*