

Chickasaw Co. Recorder
Cindy Messersmith
Fee Book 2009-0771

04/17/2009 @12:12PM
SCC SEC COR CERT
Book: Page: # Pages: 1
Total Fees: \$7.00

*Cor C
24-95-13
As referred to
in Engr. Tie Book*

TEKIPPE ENGINEERING, P.C., 128 South Vine Street, West Union, Iowa 52175 Phone (563) 422-5131

UNITED STATES PUBLIC LAND SURVEY CORNER CERTIFICATE
OF ²⁴

Land Survey Monuments situated in Section 19, Township 95 North, Range 12 West of the Fifth Principal Meridian, Chickosaw County, Iowa.
Previously recorded in (1) Doc. #2004-0476 (2) Doc. #2002-3134 in County Recorder's Office.
(book, page, document number, etc.)

(Show reason for preparing this certificate, the evidence and detailed procedures used in establishing the corner positions and monumentation found or placed.)

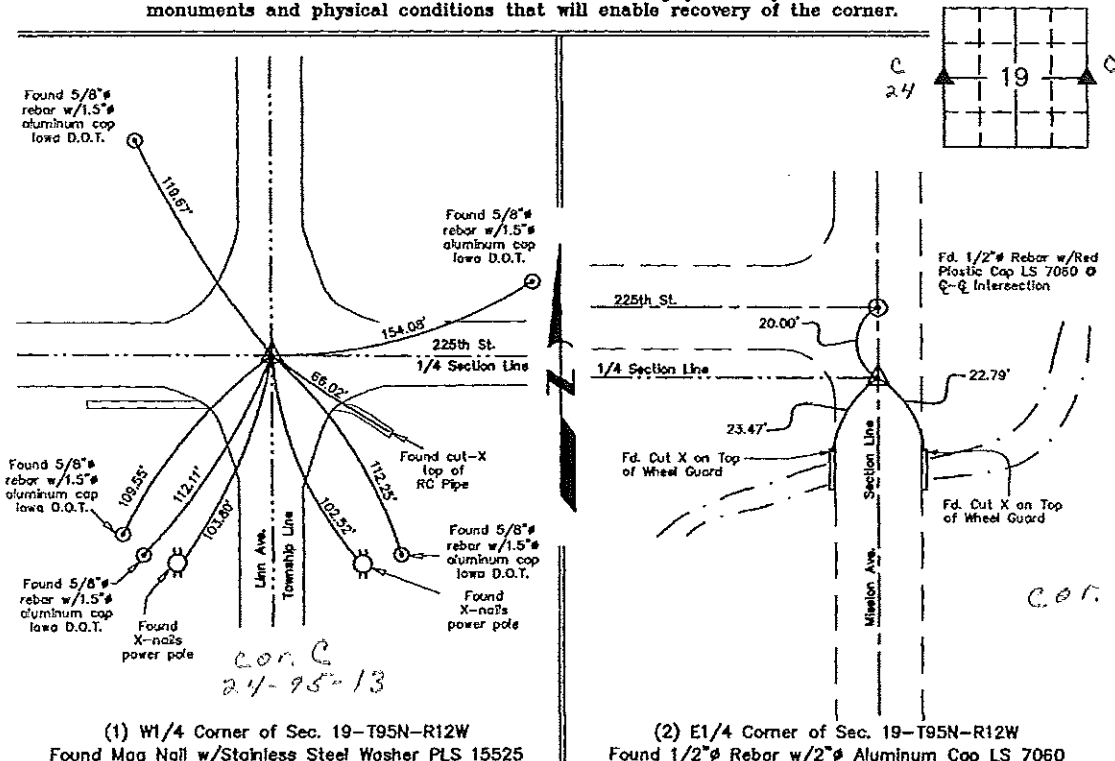
Monument Description and Remarks: (1) W1/4 Corner of Section 19-T95N-R12W:
Found mag nail w/stainless steel washer. Updating certificate because only 8 of the 11 recorded ties are remaining.

(2) E1/4 Corner of Section 19-T95N-R12W:
Found 1/2" rebar w/2" aluminum cop LS 7060. Updating certificate because only 3 of the 4 recorded ties are remaining.

PLAN VIEW

Project Number 091060.LS
Field Book: N.H. #2, Page 31

Show a minimum of three reference ties to durable physical objects, relevant monuments and physical conditions that will enable recovery of the corner.



<p>I hereby certify that this land surveying document was prepared and the related survey work was performed by me or under my direct personal supervision and that I am a duly licensed Land Surveyor under the laws of the State of Iowa.</p> <p><i>Lyle G. Tekippe</i> 4-9-09 Lyle G. Tekippe Date</p> <p>License Number 7060 My license renewal date is December 31, 2010. Sheets covered by this seal: Individual</p>	<p>List Corners to be Indexed</p> <table border="1"> <thead> <tr> <th>Corners</th> <th>Section</th> <th>Twp.</th> <th>Range</th> </tr> </thead> <tbody> <tr> <td>W1/4</td> <td>19</td> <td>95N</td> <td>12W</td> </tr> <tr> <td>E1/4</td> <td>19</td> <td>95N</td> <td>12W</td> </tr> </tbody> </table> <p>X:\Section Corners\Sec. 19\19-95-12KO.dwg</p>	Corners	Section	Twp.	Range	W1/4	19	95N	12W	E1/4	19	95N	12W
	Corners	Section	Twp.	Range									
W1/4	19	95N	12W										
E1/4	19	95N	12W										

Section 24-95-13
As referred to in
Engl. Title Book

FILED 2004-0476
RECORDER'S OFFICE
CHICKASAW COUNTY, IOWA

2004 MAR 3 AM 8 51

CINDY MESSERSMITH
COUNTY RECORDER

TeKIPPE ENGINEERING, P.C., 128 South Vine Street, West Union, Iowa 52175 Phone (563) 422-5131

UNITED STATES PUBLIC LAND SURVEY CORNER CERTIFICATE

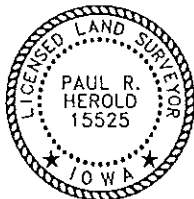
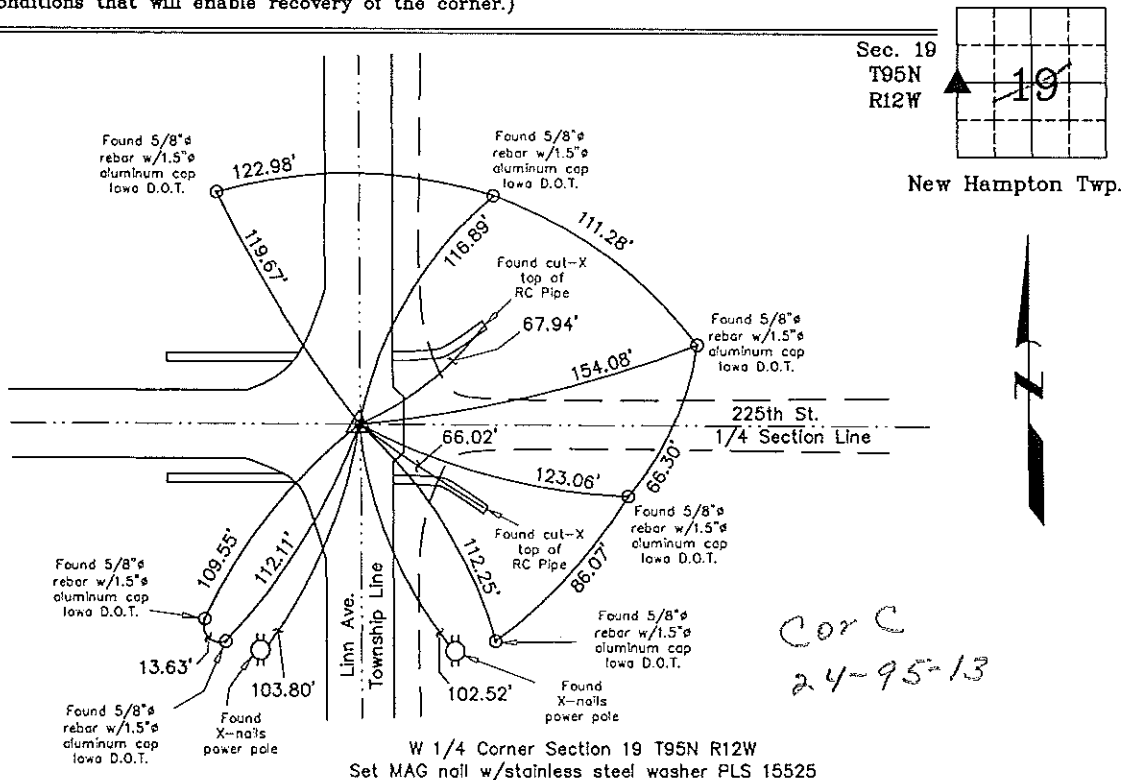
OF ²⁴ ~~19~~
Land Survey Monuments situated in Section 19, Township 95 North, Range 12/3 West of the Fifth Principal Meridian, CHICKASAW County, Iowa.
Previously recorded in Book 151 Page 46 in County Recorder's Office.
(book, page, document number, etc.)

(Show reason for preparing this certificate, the evidence and detailed procedures used in establishing the corner positions and monumentation found or placed.)

Monument Description and Remarks: W 1/4 Corner Section 19 T95N R12W: The monument noted in the previous Section Corner Certificate, recorded in the Chickasaw County Recorder's Office in Book 151, Page 46, was covered by a HMA overlay. Set MAG nail w/stainless steel washer PLS 15525 using reference ties from the previous Certificate. Several reference ties were added.

PLAN - VIEW

(Show a minimum of three reference ties to durable physical objects, relevant monuments and physical conditions that will enable recovery of the corner.)



I hereby certify that this land surveying document was prepared and the related survey work was performed by me or under my direct personal supervision and that I am a duly licensed Land Surveyor under the laws of the State of Iowa.

Paul R. Herold 3-2-04

Paul R Herold Date
License number 15525
My license renewal date is December 31, 2004.
Sheets covered by this seal: Individual

List Corners to be Indexed			
Corners	Section	Twp.	Range
W 1/4	19	95N	12W
E 1/4	24	95N	13W

X:\Section Corners\Sec. 19\19-95-12k.dwg
Project Number 03227.LS

UNITED STATES PUBLIC LAND SURVEY CORNER CERTIFICATE

OF

Land Survey Monuments situated in Section 19 24, Township 95 NORTH, Range 13 WEST, of the Fifth Principal Meridian, CHICKASAW County, Iowa.
Previously recorded in (NONE) in County Recorder's Office.
(book, page, document number, etc.)

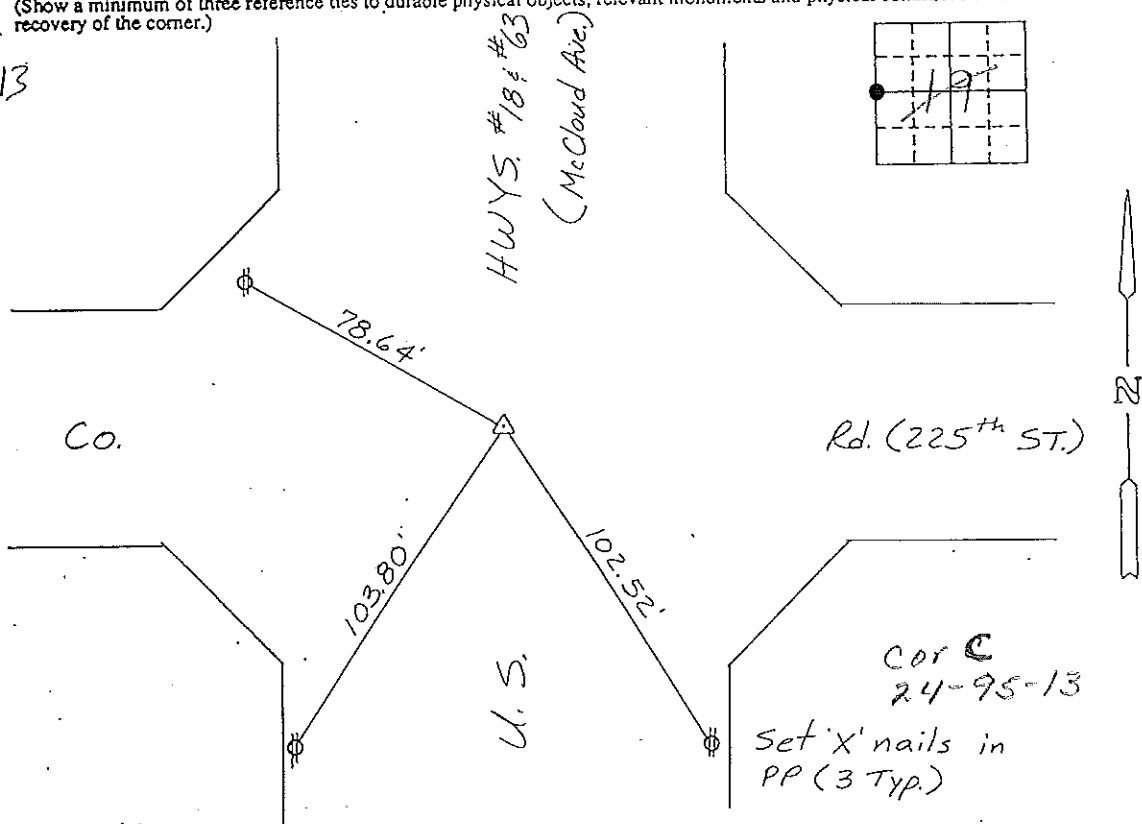
(Show reason for preparing this certificate, the evidence and detailed procedures used in establishing the corner positions and monumentation found or placed.)

Monument Description and Remarks: W 1/4 CORNER, SECTION 19-T95N-R12W:
FOUND IDOT ALUMINUM CAP IN ASPHALT PAVEMENT.

PLAN - VIEW

(Show a minimum of three reference ties to durable physical objects, relevant monuments and physical conditions that will enable recovery of the corner.)

Section 24-95-13
As referred to in
Engr. Tie Book



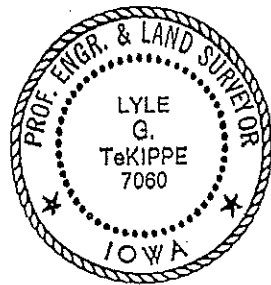
W 1/4 CORNER, SECTION 19-T95N-R12W

I hereby certify that the survey work was completed and this certificate was prepared by me or under my direct personal supervision and that I am a duly registered land surveyor under the laws of the state of Iowa.

Signature: Lyle G. TeKippe
Name typed or printed: Lyle G. TeKippe

Date: 12-16-92 Reg. No. 7060
My Registration Expires December 31, 1992

Corners	List Corners to be Indexed		
	Section	Twp	Range
W 1/4	19	95N	12W



SEAL

13
Cor C 24-95-13
Placed in
the Book 12/28/92