

SEE SCC 2004-0479

TEKIPPE ENGINEERING, P.C., 128 South Vine Street, West Union, Iowa 52175 Phone (563) 422-6191

UNITED STATES PUBLIC LAND SURVEY CORNER CERTIFICATE

OF

Land Survey Monuments situated in Section 24, Township 95 North, Range 13 West of the Fifth Principal Meridian, CHICKASAW County, Iowa.
 Previously recorded in (1) none (2) Book 151 Page 47 in County Recorder's Office.
 (book, page, document number, etc.)

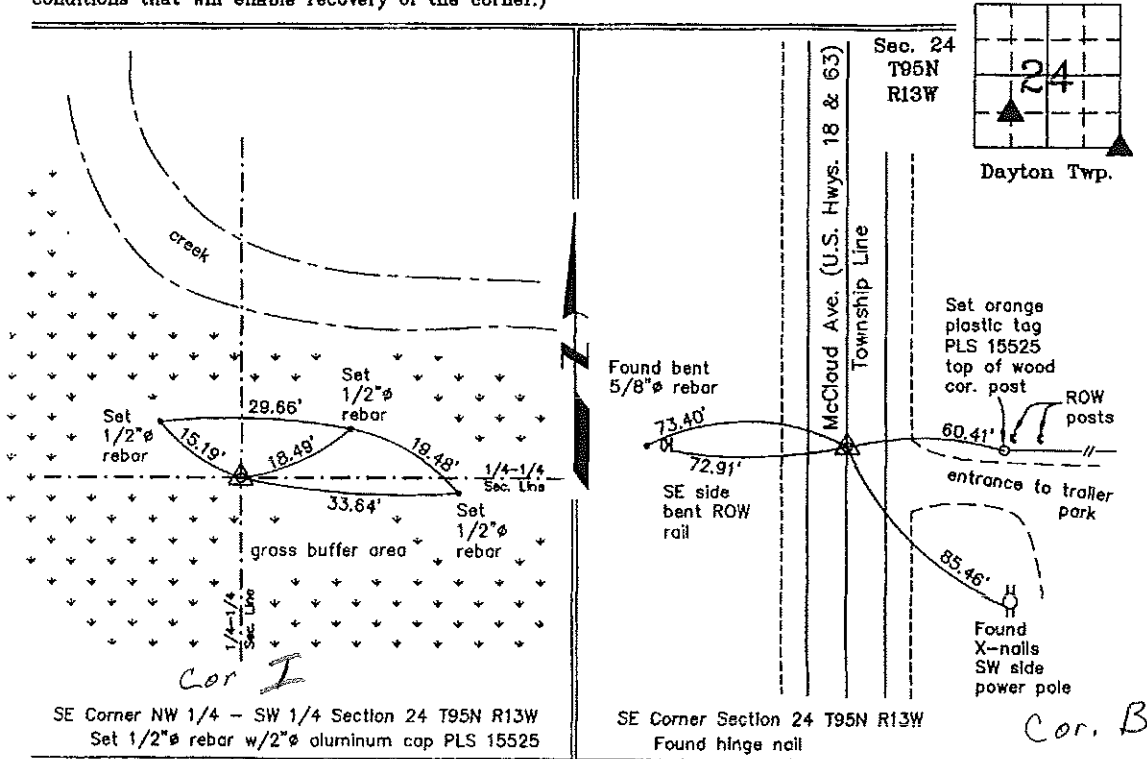
(Show reason for preparing this certificate, the evidence and detailed procedures used in establishing the corner positions and monumentation found or placed.)

Monument Description and Remarks: (1) SE Corner NW 1/4-SW 1/4 Section 24 T95N R13W: Set 1/2"Ø rebar w/2"Ø aluminum cap PLS 15525 at the intersection of 1/4-1/4 Section Lines after the standard mathematical subdivision of the Section.
(2) SE Corner Section 24 T95N R13W: Found hinge nail. The Iowa DOT monument mentioned in the previous Section Corner Certificate, recorded in the Chickasaw County Recorder's Office in Deeds Book 151, Page 47, was missing. One reference tie was missing; one reference tie was damaged. Added two reference ties.

PLAN - VIEW

Project Number 02022.LS
 FB. New Hampton 1 PG. 27-31

(Show a minimum of three reference ties to durable physical objects, relevant monuments and physical conditions that will enable recovery of the corner.)



I hereby certify that this land surveying document was prepared and the related survey work was performed by me or under my direct personal supervision and that I am a duly licensed Land Surveyor under the laws of the State of Iowa.

Paul R. Herold 2-15-02
 Paul R. Herold Date
 License number 15525
 My license renewal date is December 31, 2002.
 Sheets covered by this seal: Individual

List Corners to be Indexed			
Corners	Section	Twp.	Range
SE-NW-SW	24	95N	13W
SE	24	95N	13W