

FILED 2004-0478

RECORDER'S OFFICE  
CHICKASAW COUNTY, IOWA

2004 MAR 3 AM 8 53

CINDY MESSERSMITH  
COUNTY RECORDER

TeKIPPE ENGINEERING, P.C., 128 South Vine Street, West Union, Iowa 52175 Phone (563) 422-5131

### UNITED STATES PUBLIC LAND SURVEY CORNER CERTIFICATE

OF

Land Survey Monuments situated in Section 24, Township 95 North, Range 13 West of the Fifth Principal Meridian, CHICKASAW County, Iowa.

Previously recorded in Document 2000-2059 in County Recorder's Office.  
(book, page, document number, etc.)

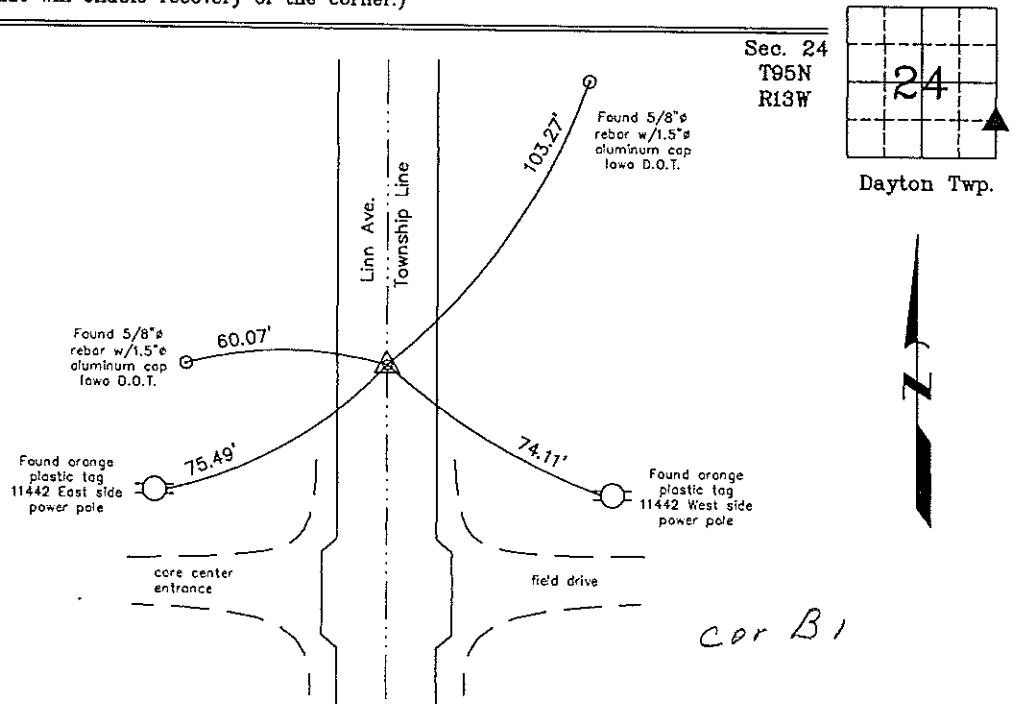
(Show reason for preparing this certificate, the evidence and detailed procedures used in establishing the corner positions and monumentation found or placed.)

Monument Description and Remarks: **NE Corner SE 1/4 - SE 1/4 Section 24 T95N R13W:**

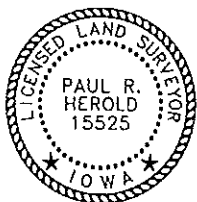
The monument noted in the previous Section Corner Certificate, recorded in the Chickasaw County Recorder's Office in Document 2000-2059, was covered by a HMA overlay. Set MAG nail w/stainless steel washer PLS 15525 using the reference ties from the previous Certificate.

### PLAN - VIEW

(Show a minimum of three reference ties to durable physical objects, relevant monuments and physical conditions that will enable recovery of the corner.)



NE Corner SE 1/4 - SE 1/4 Section 24 T95N R13W  
Set MAG nail w/stainless steel washer PLS 15525



I hereby certify that this land surveying document was prepared and the related survey work was performed by me or under my direct personal supervision and that I am a duly licensed Land Surveyor under the laws of the State of Iowa.

*Paul R. Herold* 3-2-04  
Paul R. Herold Date  
License number 15525  
My license renewal date is December 31, 2004.  
Sheets covered by this seal: Individual

List Corners to be indexed			
Corners	Section	Twp.	Range
NE-SE-SE	24	95N	13W
NW-SW-SW	19	95N	12W

X:\Section Corners\Sec. 24\24-95-13t.dwg  
Project Number 03227.LS

FILE NO. 2059  
 2000 PAGE 2059  
 Fee 6.00  
 200 NOV 20 AM 10:06

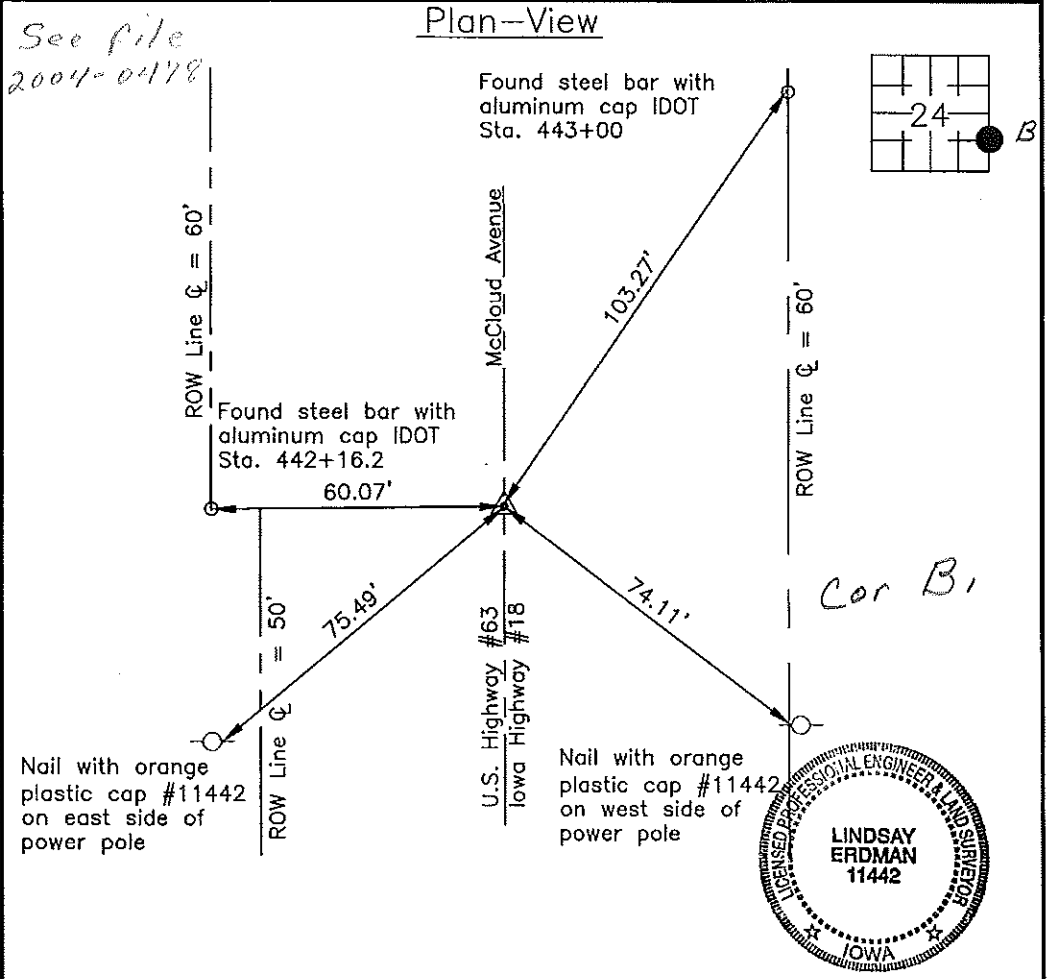
CINDY MESSERSMITH  
 CHICKASAW CO. RECORDER

Prepared by: Erdman Engineering, P.C. 708 Commerce Drive, P.O. Box 246 Decorah, Iowa 52101,(319)382-4194

United States Public Land Survey Corner Certificate  
 of

Land Survey Monuments situated in Section 24, Township 95, Range 13 West of the 5th Principal Meridian in Chickasaw County, Iowa. Previously recorded in does not apply in the county Recorder's Office.

Monument Description and Remarks: This certificate is prepared in accordance with Section 193C of the Code of Iowa. No previous certificate has been filed for this corner location. We found no record of the ESE  $\frac{1}{8}$  Corner being set. We found no evidence of the corner in the field. We found the E  $\frac{1}{4}$  Corner and the SE Corner of Section 24. Based on these corners we set a Mag-Nail with  $\frac{1}{2}$ " stainless steel washer on line and midway between the E  $\frac{1}{4}$  Corner and the SE Corner as the ESE  $\frac{1}{8}$  Corner of Section 24, Township 95 North, Range 13 West.



I hereby certify that the survey work was completed and this certificate was prepared by me or under my direct supervision and that I am a duly registered land surveyor under the laws of the State of Iowa.

Signature: Lindsay Erdman  
 Lindsay Erdman, P.E. and L.S.

Date: 4/17/02 Reg. No. 11442

My license renewal date is December 31, 2000

Corner(s) to be Indexed

Corner	Section	Township	Range
ESE $\frac{1}{8}$	24	95	13

B1  
 Filed 3-20-01

2000-2059