

Chickasaw Co. Recorder
 Cindy Messersmith
Fee Book 2014-0589
 05/05/2014 @0851AM
 SCC SEC COR CERT # Pages: 1
 Total Fees: Page: \$7.00

Prepared by & Return to: Herold - Reicks Surveying, 10 East Main Street, New Hampton, IA 50659, Ph. 641-394-2725

UNITED STATES PUBLIC LAND SURVEY CORNER CERTIFICATE

Land Survey Monuments situated in Section 13, Township 95 North, Range 13 West of the Fifth Principal Meridian, Chickasaw County, Iowa. Previously recorded in Doc. #2002-0464 in the County Recorder's office.

This certificate is being prepared in compliance with Iowa Code Chapter 355.11 because:

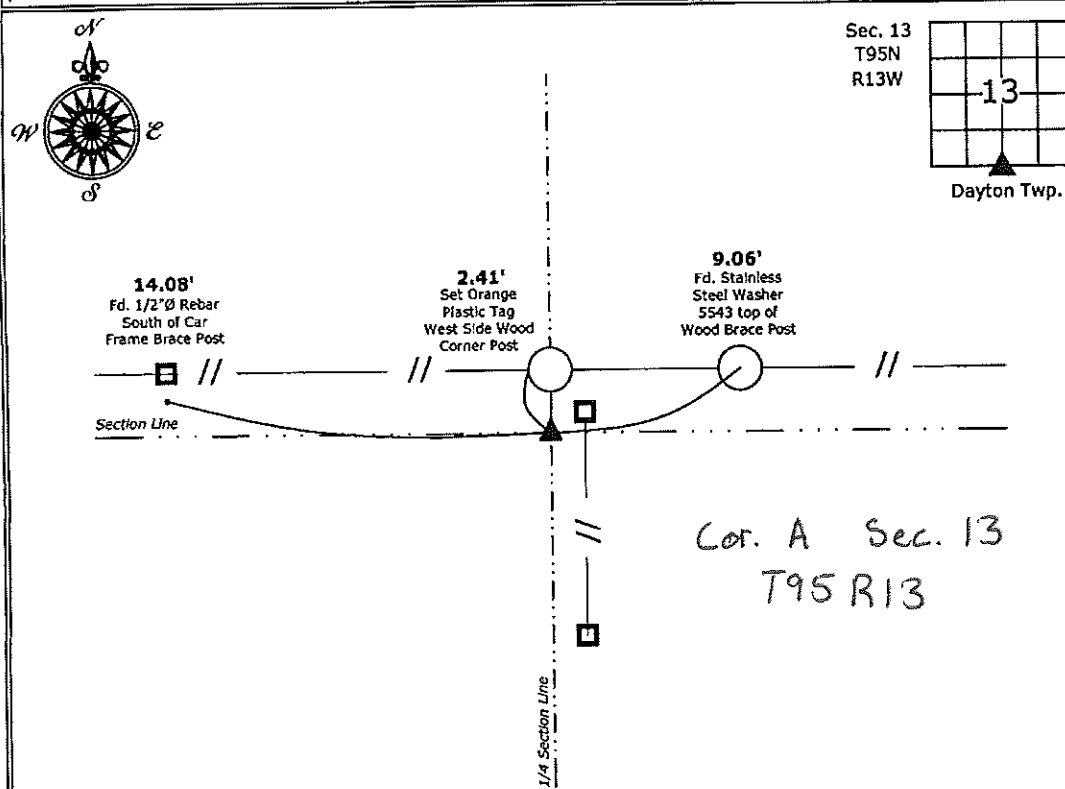
- There is no certificate on file for this corner.
- There are no longer three valid ties of record.
- There are changes to reference ties of record.
- There is change of monumentation of record.
- To clarify description of record monument (ties).

Monument Description and Remarks:

South 1/4 Corner: Found T-bar w/stainless steel cap #5543 with information obtained from a previous Section Corner Certificate, set new tie to update the corner.

PLAN - VIEW

(Show a minimum of three reference ties to durable physical objects, relevant monuments and physical conditions that will enable recovery of the corner.)



Cor. A Sec. 13
T95 R13

South 1/4 Corner Section 13-95-13
 Found T-bar w/stainless steel cap #5543



I hereby certify that this land surveying document was prepared and the related survey work was performed by me or under my direct personal supervision and that I am a duly licensed Land Surveyor under the laws of the State of Iowa.

Paul R. Herold 5-2-14
 Paul R. Herold Date:

License number 15525
 My license renewal date is December 31, 2014.
 Sheets covered by this seal: Individual sheet only

List Corners to be Indexed			
Corners	Section	Twp.	Range
S 1/4	13	95	13

Project Number: 2014-021
 FB: New Hampton 2, Pgs. 18-19

File: S:\CSD Projects\County Control Systems\CHICKASAW\CHICK-28 (New Hampton)\CHICK-28.dwg, 5/2/2014 4:25:46 PM

UNITED STATES PUBLIC LAND SURVEY CORNER CERTIFICATE

OF 13
 Land Survey Monuments situated in Section 24, Township 95 North, Range 13 West of the Fifth Principal Meridian, CHICKASAW County, Iowa.
 Previously recorded in none in County Recorder's Office.
(book, page, document number, etc.)

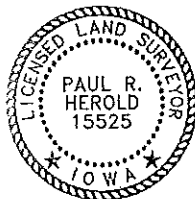
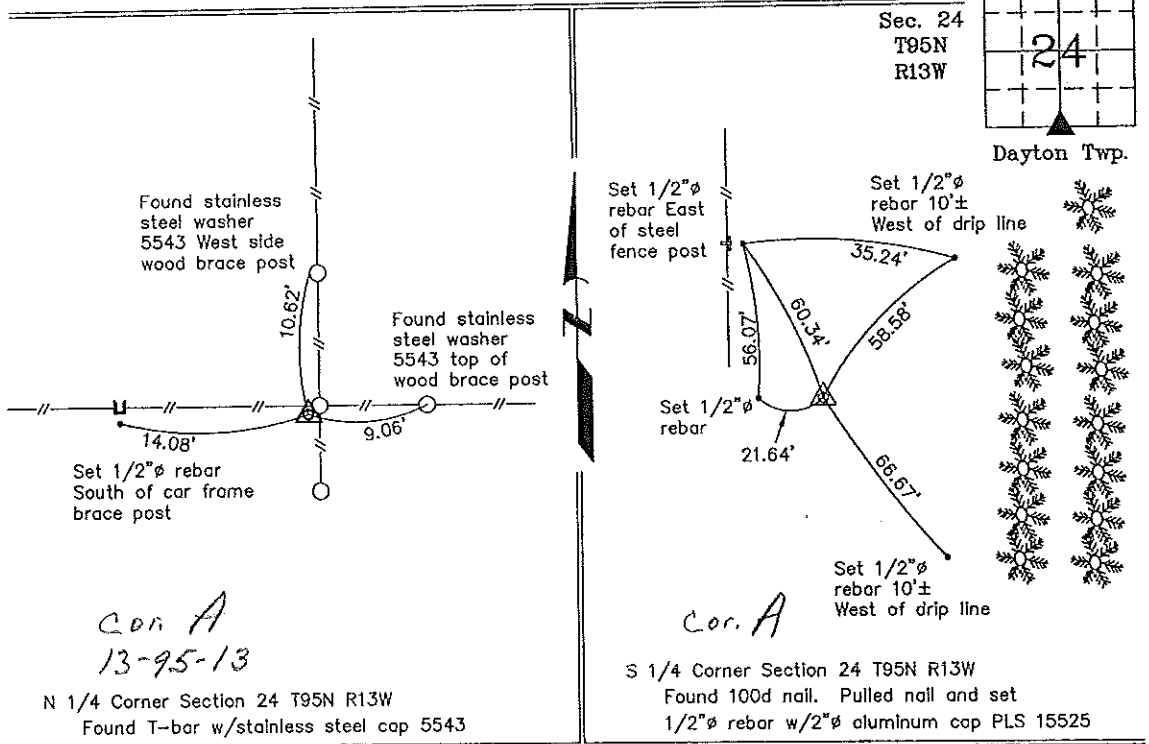
(Show reason for preparing this certificate, the evidence and detailed procedures used in establishing the corner positions and monumentation found or placed.)

Monument Description and Remarks: N 1/4 Corner Section 24 T95N R13W: Found T-bar w/stainless steel cap 5543 with information obtained from a Survey and Plat recorded in the Chickasaw County Recorder's Office in Deeds Book 122, Pages 73-74 on May 20, 1980, and a ROW Acquisition Plat made by Kenneth Stark, dated December 3, 1999.
S 1/4 Corner Section 24 T95N R13W: Found 100d nail equidistant and on line between the SE Corner and the SW Corner. Pulled nail and set 1/2"φ rebar w/2"φ aluminum cap PLS 15525. Location of the Corner is based on a R.O.W. Acquisition Plat made by Kenneth Stark, as Point I on Parcel 31 for Iowa DOT Project NHSN-63-8(31)--2R-19.

PLAN - VIEW

Project Number 02022.1S
 FB. New Hampton 1 PG. 27-31

(Show a minimum of three reference ties to durable physical objects, relevant monuments and physical conditions that will enable recovery of the corner.)



I hereby certify that this land surveying document was prepared and the related survey work was performed by me or under my direct personal supervision and that I am a duly licensed Land Surveyor under the laws of the State of Iowa.

Paul R. Herold 2-15-02
 Paul R. Herold Date
 License number 15525
 My license renewal date is December 31, 2002.
 Sheets covered by this seal: Individual

List Corners to be Indexed			
Corners	Section	Twp.	Range
N 1/4	24	95N	13W
S 1/4	24	95N	13W

Entered 2-20-02

County Engineer's Copy

Section 13-95-13 Chickasaw
 As referred to in LAND SURVEY MONUMENT RECORD
 Engg. Title Book

COUNTY

13
 Sec. 24 T. 95 N R. 13 W
 North Quarter Corner

All items to be completed. Please print or type.

1. Type of Monument (check one)

- Section Corner Bench Mark
 Quarter Corner Other

2. Description of Evidence found and location.

Measured S. line sec 13-95-13 from SE cor to SW cor. Determined that well established corner post, at fence intersection, fit prorated record distances on file at county engineers office. However cor. post fell 6.87' north of line from SE cor to SW cor. Set iron T-bar monument next to said corner post at the prorated E-W distance.

Cor A
 13-95-13

3. Description of monument and/or accessories established by you to perpetuate the location of this point.

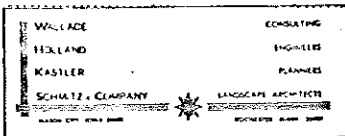
See sketch
 See file
 2002-0464

Survey crew
 L. Bayer
 T. Lovik
 L. Thompson

Date of Field Work 4-21-80

Signed Carl S. Kastler RLS 5343

Firm Name



4. Sketch showing relative location of monument and reference points. Show supporting and/or contradictory evidence where applicable. (Minimum No. of reference points four (4)).

