

Section 13-95-13
As referred to in
Enga Tic Book

FILED 2004-0477
RECORDER'S OFFICE
CHICKASAW COUNTY, IOWA
2004 MAR 3 AM 8 52
CINDY MESSERSMITH
COUNTY RECORDER

TeKIPPE ENGINEERING, P.C., 128 South Vine Street, West Union, Iowa 52175 Phone (563) 422-6131

UNITED STATES PUBLIC LAND SURVEY CORNER CERTIFICATE

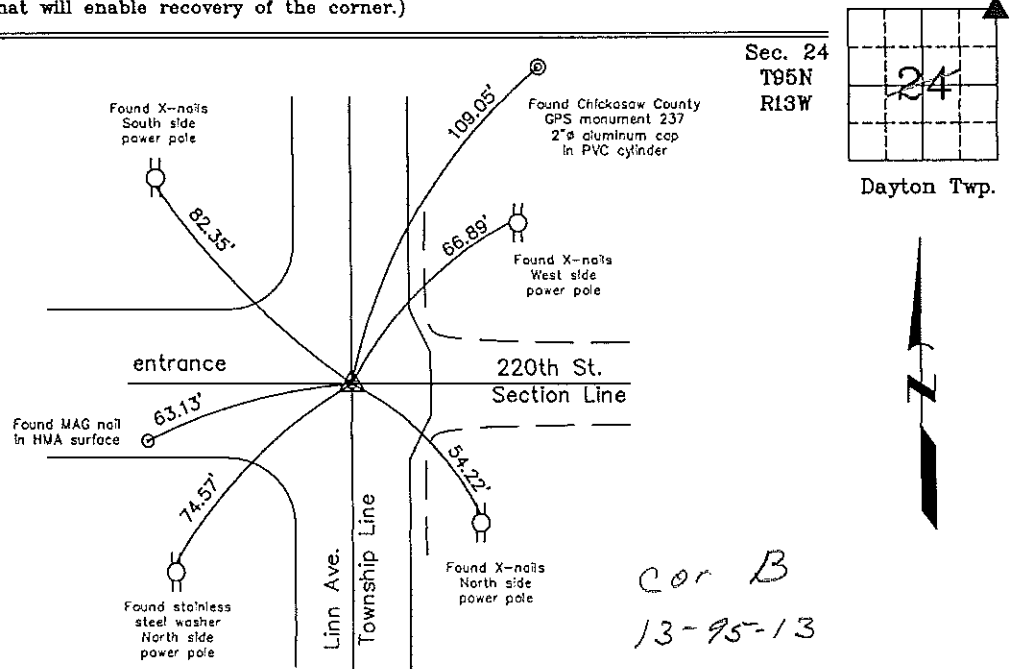
OF
Land Survey Monuments situated in Section 24¹³, Township 95 North, Range 13 West of the Fifth Principal Meridian, CHICKASAW County, Iowa.
Previously recorded in Document 2002-0465 in County Recorder's Office.
(book, page, document number, etc.)

(Show reason for preparing this certificate, the evidence and detailed procedures used in establishing the corner positions and monumentation found or placed.)

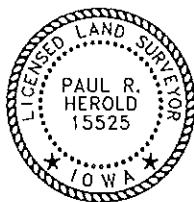
Monument Description and Remarks: NE Corner Section 24 T95N R13W: The monument noted in the previous Section Corner Certificate, recorded in the Chickasaw County Recorder's Office in Document 2002-0465, was covered with a HMA overlay. Set MAG nail w/stainless steel washer PLS 15525 using reference ties from the previous Section Corner Certificate.

PLAN - VIEW

(Show a minimum of three reference ties to durable physical objects, relevant monuments and physical conditions that will enable recovery of the corner.)



NE Corner Section 24 T95N R13W
Set MAG nail w/stainless steel washer PLS 15525



I hereby certify that this land surveying document was prepared and the related survey work was performed by me or under my direct personal supervision and that I am a duly licensed Land Surveyor under the laws of the State of Iowa.

Paul R. Herold 3-2-04
Paul R. Herold Date
License number 15525
My license renewal date is December 31, 2004.
Sheets covered by this seal: Individual

List Corners to be Indexed			
Corners	Section	Twp.	Range
NE	24	95N	13W
NW	19	95N	12W

X:\Section Corners\Sec. 24\24-95-13e.dwg
Project Number 03227.LS

Section 13-95-13
 As referred to in
 Engr. The Book

Filed 2002-0465
 FILED 2002-3133
 RECORDER'S OFFICE
 CHICKASAW COUNTY, IOWA
 2002 DEC 23 AM 10 16
 CINDY MESSERSMITH
 COUNTY RECORDER

TeKIPPE ENGINEERING, P.C., 128 South Vine Street, West Union, Iowa 52175 Phone (563) 422-5131

UNITED STATES PUBLIC LAND SURVEY CORNER CERTIFICATE

OF
 Land Survey Monuments situated in Section 19, Township 95 North, Range
12 West of the Fifth Principal Meridian, CHICKASAW County, Iowa
 Previously recorded in none in County Recorder's Office
(book, page, document number, etc.)

(Show reason for preparing this certificate, the evidence and detailed procedures used in establishing the corner positions and monumentation found or placed.)

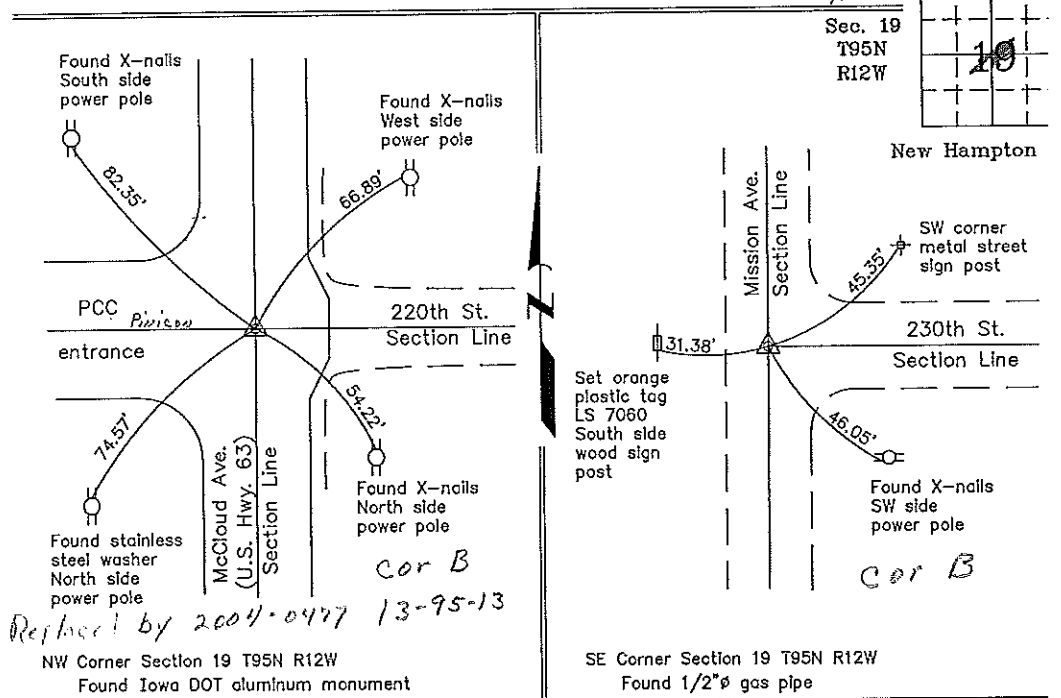
Monument Description and Remarks: NW Corner Section 19 T95N R12W: Found Iowa DOT monument with information obtained from as-built plans for U.S. Highway 63.

SE Corner Section 19 T95N R12W: Found 1/2" gas pipe with information obtained from the Chickasaw County Engineer's Office in the Field Book New Hampton Twp. Corner Ties as Corner 'B', Section 19.

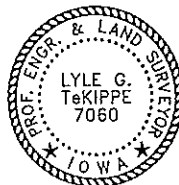
PLAN - VIEW

Project Number 00045
 FB. New Hampton-S.I.
 PG. 1-5

(Show a minimum of three reference ties to durable physical objects, relevant monuments and physical conditions that will enable recovery of the corner.)



I hereby certify that this land surveying document was prepared and the related survey work was performed by me or under my direct personal supervision and that I am a duly licensed Land Surveyor under the laws of the State of Iowa.



Lyle G. TeKippe 12-20-02
 Lyle G. TeKippe Date
 License number 7060
 My license renewal date is December 31, 2002.
 Sheets covered by this seal: Individual

List Corners to be Indexed			
Corners	Section	Twp.	Range
NW	19	95N	12W
SE	19	95N	12W

Filed 1-03-03

X:\Section Corners\Sec. 19\19-95-12ay.dwg

County Engineer
 C. J. ...