

Section 25-95-13
 As referred to in
 Engr. Tie Book

FILED 2004-0480
 RECORDER'S OFFICE
 CHICKASAW COUNTY, IOWA
 2004 MAR 3 AM 8 55
 CINDY MESSERSMITH
 COUNTY RECORDER

TEKIPPE ENGINEERING, P.C., 128 South Vine Street, West Union, Iowa 52175 Phone (563) 422-6131

UNITED STATES PUBLIC LAND SURVEY CORNER CERTIFICATE

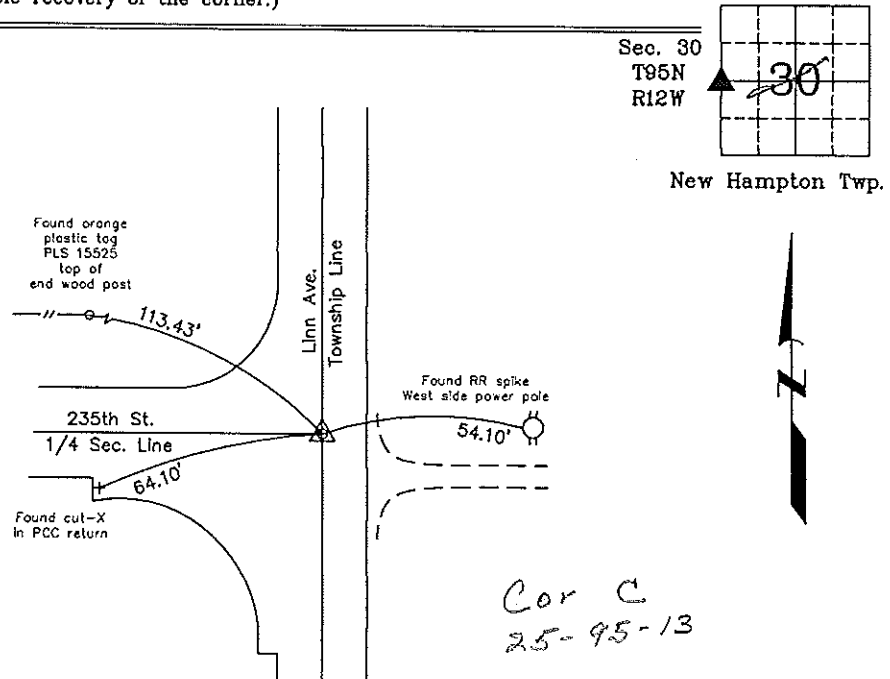
OF
 Land Survey Monuments situated in Section 30²⁵, Township 95 North, Range 13-12 West of the Fifth Principal Meridian, CHICKASAW County, Iowa.
 Previously recorded in Document 2003-3752 in County Recorder's Office.
 (book, page, document number, etc.)

(Show reason for preparing this certificate, the evidence and detailed procedures used in establishing the corner positions and monumentation found or placed.)

Monument Description and Remarks: W 1/4 Corner Section 30 T95N R12W: The monument noted in the previous Section Corner Certificate, recorded in the Chickasaw County Recorder's Office in Document 2003-3752 was covered by a HMA overlay. Set MAG nail w/stainless steel washer PLS 15525 using the reference ties from the previous Certificate.

PLAN - VIEW

(Show a minimum of three reference ties to durable physical objects, relevant monuments and physical conditions that will enable recovery of the corner.)



W 1/4 Corner Section 30 T95N R12W
 Set MAG nail w/stainless steel washer PLS 15525



I hereby certify that this land surveying document was prepared and the related survey work was performed by me or under my direct personal supervision and that I am a duly licensed Land Surveyor under the laws of the State of Iowa.

Paul R. Herold 3-2-04
 Paul R. Herold Date
 License number 15525
 My license renewal date is December 31, 2004.
 Sheets covered by this seal: Individual

List Corners to be Indexed			
Corners	Section	Twp.	Range
W 1/4	30	95N	12W

X:\Section Corners\Sec. 30\30-95-12k.dwg
 Project Number 03072.LS

Section 25-95-13
 As referred to in
 Engr. Tie Book

FILED 2003-3752
 RECORDER'S OFFICE
 CHICKASAW COUNTY, IOWA

2003 DEC 19 AM 8 52

CINDY MESSERSMITH
 COUNTY RECORDER

TeKIPPE ENGINEERING, P.C., 128 South Vine Street, West Union, Iowa 52175 Phone (563) 422-6131

CORRECTIVE
UNITED STATES PUBLIC LAND SURVEY CORNER CERTIFICATE
 OF 25

Land Survey Monuments situated in Section 30, Township 95 North, Range 12 West of the Fifth Principal Meridian, CHICKASAW County, Iowa.

Previously recorded in none in County Recorder's Office.
(book, page, document number, etc.)

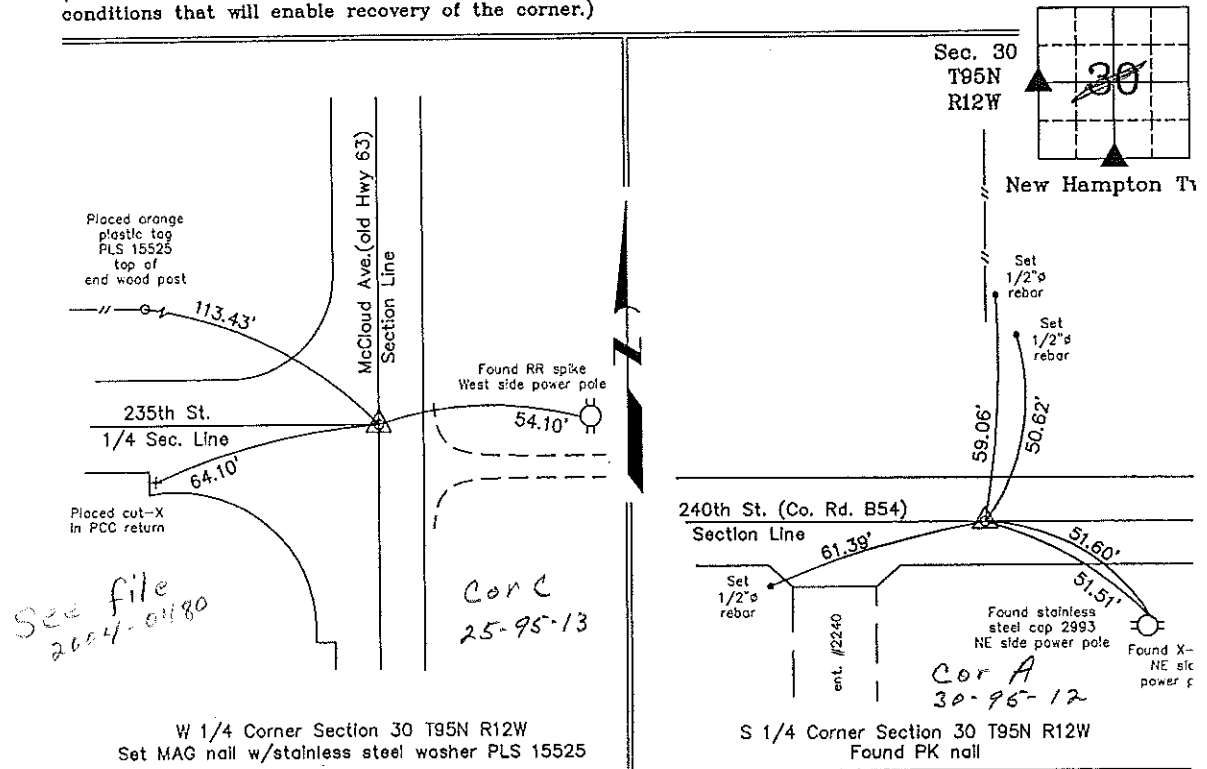
(Show reason for preparing this certificate, the evidence and detailed procedures used in establishing the corner positions and monumentation found or placed.)

Monument Description and Remarks: Corrective of previous Section Corner Certificate Document # 2003-3498: A road was mislabeled at the W 1/4 Corner. W 1/4 Corner Section 30 T95N R12W: Placed MAG nail w/stainless steel washer PLS 15525 at the location of the previous monument (Iowa D.O.T. 3"Ø aluminum monument). That position was established prior to reconstruction of the intersection. S 1/4 Corner Section 30 T95N R12W: Found PK nail with information obtained from the Chickasaw County Engineer's Office in Field Book New Hampton Twp. Corner Ties, Corner 'A'.

PLAN - VIEW

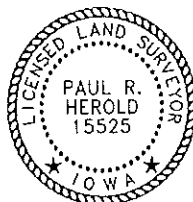
Project Number 03198.LS
 FB. 46K PG. 30-33

(Show a minimum of three reference ties to durable physical objects, relevant monuments and physical conditions that will enable recovery of the corner.)



W 1/4 Corner Section 30 T95N R12W
 Set MAG nail w/stainless steel washer PLS 15525

S 1/4 Corner Section 30 T95N R12W
 Found PK nail



I hereby certify that this land surveying document was prepared and the related survey work was performed by me or under my direct personal supervision and that I am a duly licensed Land Surveyor under the laws of the State of Iowa.

Paul R. Herold 12-18-03
 Paul R. Herold Date

License number 15525
 My license renewal date is December 31, 2004.
 Sheets covered by this seal: Individual

List Corners to be Indexed			
Corners	Section	Twp.	Range
W 1/4	30	95N	12W
S 1/4	30	95N	12W