

UNITED STATES PUBLIC LAND SURVEY CORNER CERTIFICATE

OF 13  
 Land Survey Monuments situated in Section 24, Township 95 North, Range 13 West of the Fifth Principal Meridian, CHICKASAW County, Iowa.  
 Previously recorded in none in County Recorder's Office.  
 (book, page, document number, etc.)

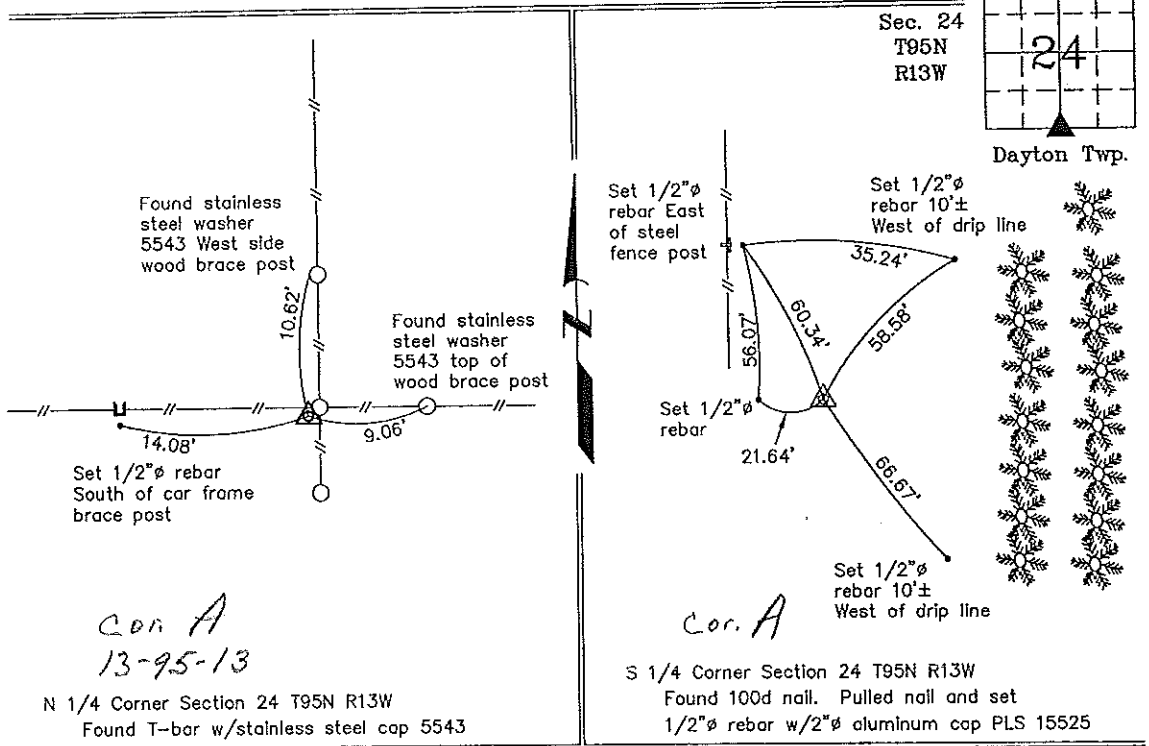
(Show reason for preparing this certificate, the evidence and detailed procedures used in establishing the corner positions and monumentation found or placed.)

Monument Description and Remarks: N 1/4 Corner Section 24 T95N R13W: Found T-bar w/stainless steel cap 5543 with information obtained from a Survey and Plat recorded in the Chickasaw County Recorder's Office in Deeds Book 122, Pages 73-74 on May 20, 1980, and a ROW Acquisition Plat made by Kenneth Stark, dated December 3, 1999.  
S 1/4 Corner Section 24 T95N R13W: Found 100d nail equidistant and on line between the SE Corner and the SW Corner. Pulled nail and set 1/2"Ø rebar w/2"Ø aluminum cap PLS 15525. Location of the Corner is based on a R.O.W. Acquisition Plat made by Kenneth Stark, as Point I on Parcel 31 for Iowa DOT Project NHSN-63-8(31)--2R-19.

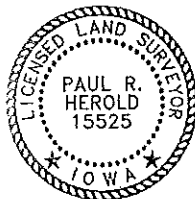
PLAN - VIEW

Project Number 02022.1S  
 FB. New Hampton 1 PG. 27-31

(Show a minimum of three reference ties to durable physical objects, relevant monuments and physical conditions that will enable recovery of the corner.)



I hereby certify that this land surveying document was prepared and the related survey work was performed by me or under my direct personal supervision and that I am a duly licensed Land Surveyor under the laws of the State of Iowa.



*Paul R. Herold* 2-15-02  
 Paul R. Herold Date  
 License number 15525  
 My license renewal date is December 31, 2002.  
 Sheets covered by this seal: Individual

List Corners to be Indexed			
Corners	Section	Twp.	Range
N 1/4	24	95N	13W
S 1/4	24	95N	13W

Entered 2-20-02

County Engineer's Copy