

2004 MAR 3 AM 8 54

CINDY MESSERSMITH  
COUNTY RECORDER

TeKIPPE ENGINEERING, P.C., 128 South Vine Street, West Union, Iowa 52176 Phone (563) 422-5131

UNITED STATES PUBLIC LAND SURVEY CORNER CERTIFICATE

OF

Land Survey Monuments situated in Section 24, Township 95 North, Range 13 West of the Fifth Principal Meridian, CHICKASAW County, Iowa.

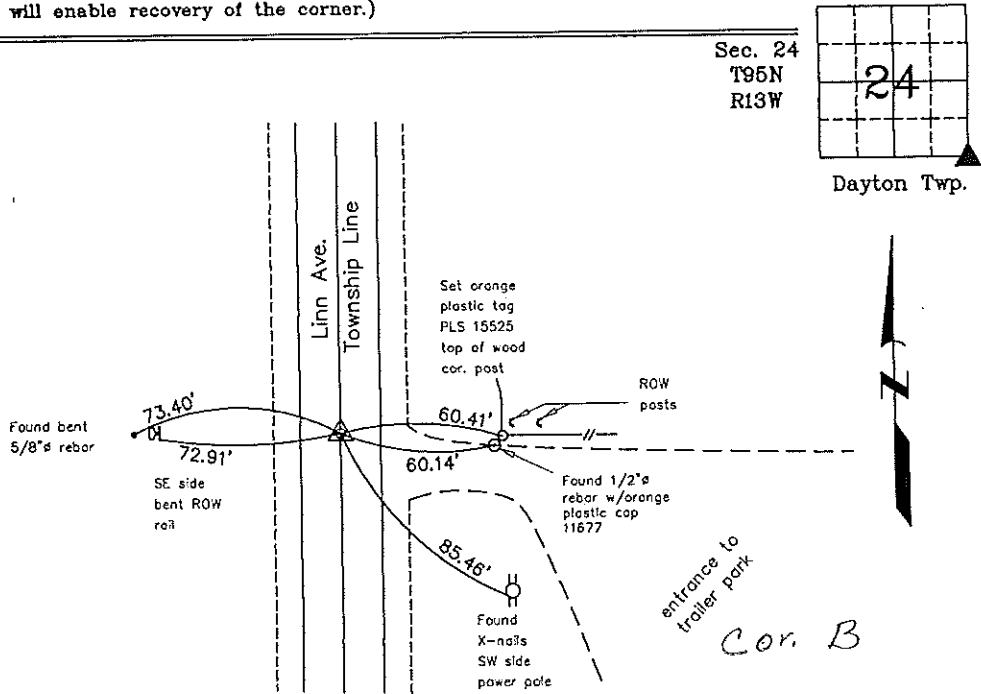
Previously recorded in Document 2002-0466 in County Recorder's Office.  
(book, page, document number, etc.)

(Show reason for preparing this certificate, the evidence and detailed procedures used in establishing the corner positions and monumentation found or placed.)

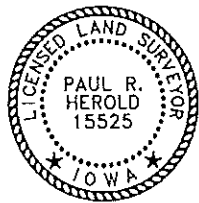
Monument Description and Remarks: SE Corner Section 24 T95N R13W: The monument noted in the previous Section Corner Certificate, recorded in the Chickasaw County Recorder's Office in Document 2002-0466, was covered by a HMA overlay. Set MAG nail w/stainless steel washer PLS 15525 using the reference ties from the previous Certificate. Added one reference tie.

PLAN - VIEW

(Show a minimum of three reference ties to durable physical objects, relevant monuments and physical conditions that will enable recovery of the corner.)



SE Corner Section 24 T95N R13W  
Set MAG nail w/stainless steel washer PLS 15525



I hereby certify that this land surveying document was prepared by me or under my direct personal supervision and that I am a duly licensed Land Surveyor under the laws of the State of Iowa.

Paul R. Herold 3-2-04  
Paul R. Herold Date  
License number 15525  
My license renewal date is December 31, 2004.  
Sheets covered by this seal: Individual

List Corners to be Indexed			
Corners	Section	Twp.	Range
SE	24	95N	13W
SW	19	95N	12W

X:\Section Corners\Sec. 24\24-95-13y.dwg  
Project Number 03227.LS

SEE SCC 2004-0479

TEKIPPE ENGINEERING, P.C., 128 South Vine Street, West Union, Iowa 52176 Phone (563) 422-6191

UNITED STATES PUBLIC LAND SURVEY CORNER CERTIFICATE

OF

Land Survey Monuments situated in Section 24, Township 95 North, Range 13 West of the Fifth Principal Meridian, CHICKASAW County, Iowa.  
 Previously recorded in (1) none (2) Book 151 Page 47 in County Recorder's Office.  
 (book, page, document number, etc.)

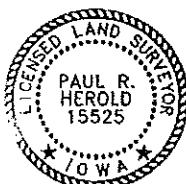
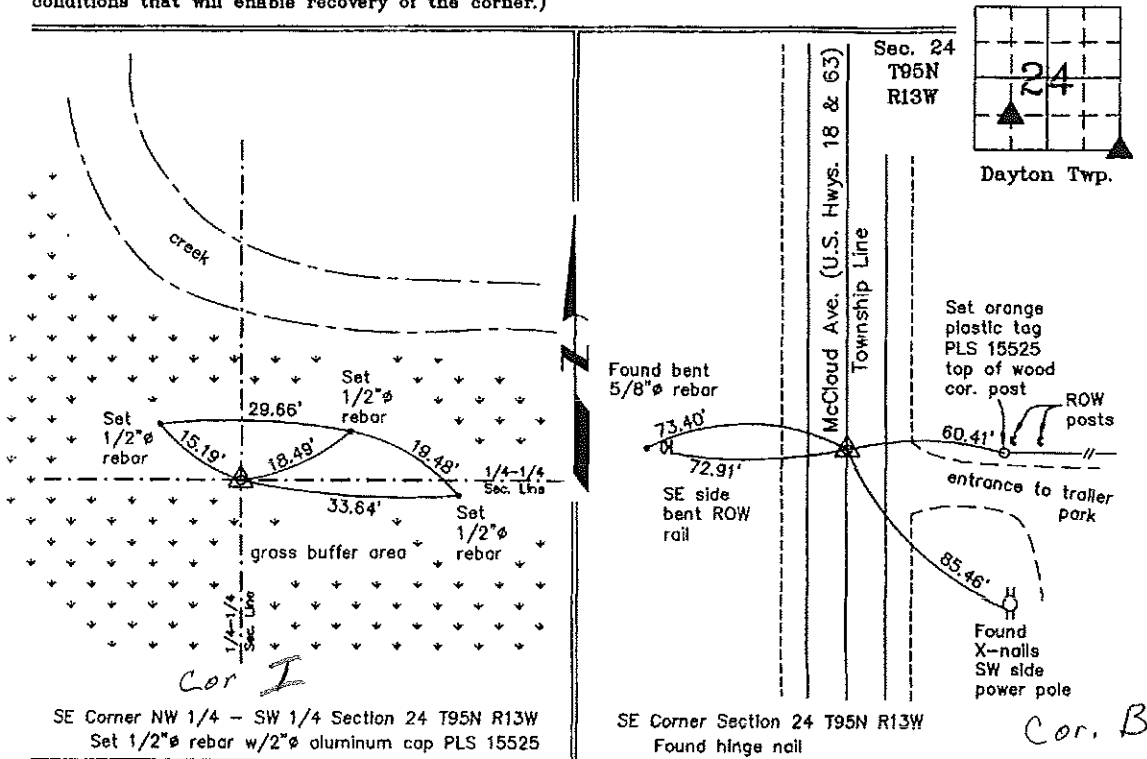
(Show reason for preparing this certificate, the evidence and detailed procedures used in establishing the corner positions and monumentation found or placed.)

Monument Description and Remarks: (1) SE Corner NW 1/4-SW 1/4 Section 24 T95N R13W: Set 1/2"Ø rebar w/2"Ø aluminum cap PLS 15525 at the intersection of 1/4-1/4 Section Lines after the standard mathematical subdivision of the Section.  
(2) SE Corner Section 24 T95N R13W: Found hinge nail. The Iowa DOT monument mentioned in the previous Section Corner Certificate, recorded in the Chickasaw County Recorder's Office in Deeds Book 151, Page 47, was missing. One reference tie was missing; one reference tie was damaged. Added two reference ties.

PLAN - VIEW

Project Number 02022.LS  
 FB. New Hampton 1 PG. 27-31

(Show a minimum of three reference ties to durable physical objects, relevant monuments and physical conditions that will enable recovery of the corner.)



I hereby certify that this land surveying document was prepared and the related survey work was performed by me or under my direct personal supervision and that I am a duly Licensed Land Surveyor under the laws of the State of Iowa.

*Paul R. Herold* 2-15-02  
 Paul R. Herold Date

License number 15525  
 My license renewal date is December 31, 2002.  
 Sheets covered by this seal: Individual

List Corners to be Indexed			
Corners	Section	Twp.	Range
SE-NW-SW	24	95N	13W
SE	24	95N	13W

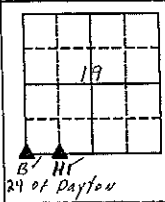
Section 24-95-13  
 As referred to in  
 Engr. Trc Book

1 DOCUMENT No. 132905 FILED FOR RECORD THE 9th DAY OF JUNE 1999 AT 8:57 STATE OF IOWA, CHICKASAW COUNTY.  
 C RECORDING FEE \$ 6.00 BY Cindy Messersmith  
 M TRANSFER FEE - \$ \_\_\_\_\_ O'CLOCK A.M. BOOK 172 PAGE 54 BY Shirley M. Payne

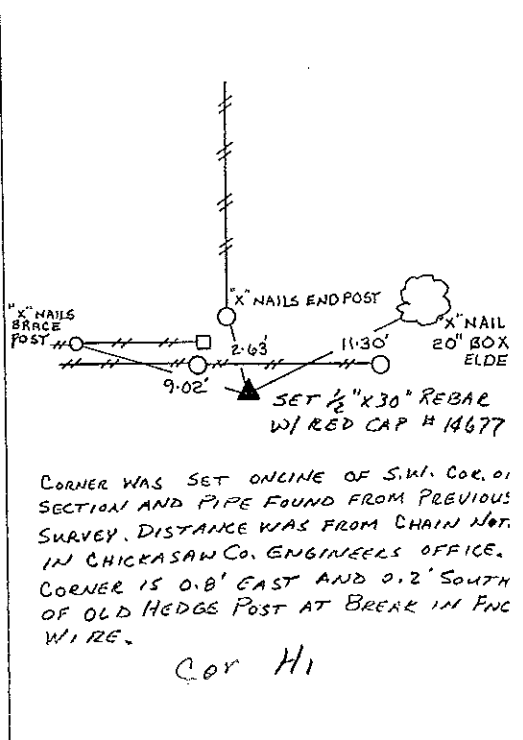
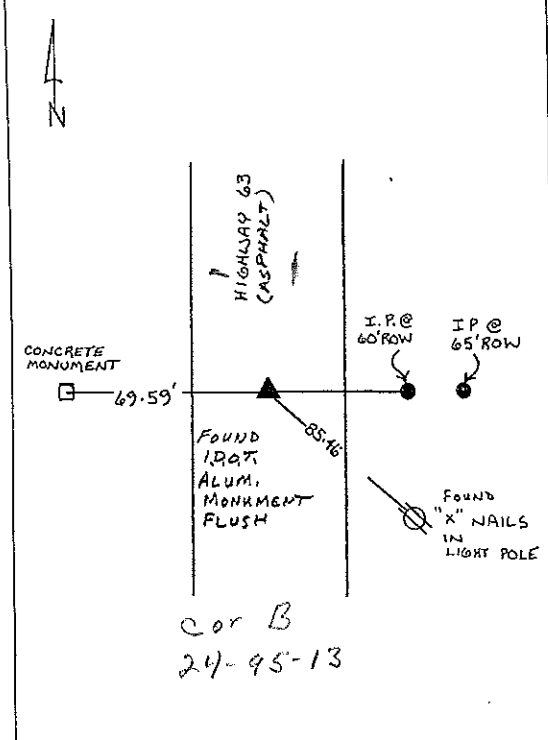
PREPARED BY - S & S LAND SURVEYING, INC., 116 W BREMER AVE., PO BOX 148, WAVERLY, IOWA 50677 - PHONE 319-352-9444

UNITED STATES PUBLIC LAND SURVEY CORNER CERTIFICATE

OF 24  
 Land Survey Monuments situated in Section 19, Township 95, Range 13, of the Fifth Principal Meridian, CHICKASAW County, Iowa.  
 Previously recorded in Book N/A, Page N/A.  
CORNERS WERE RECOVERED FOR SURVEY OF SOUTH LINE SECTION 19 BETWEEN S.W. COR. AND S.E. OF THE W 1/2 OF THE S.W. 1/4



PLAN-VIEW  
 NO SCALE

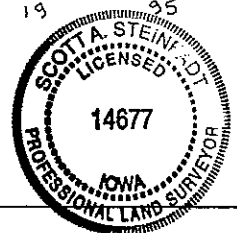


I hereby certify that this land surveying document was prepared and the related survey work was performed by me or under my direct personal supervision and that I am a duly Licensed Professional Land Surveyor under the laws of the State of Iowa.  
Scott A. Steinfadt 6/8/99  
 Scott A. Steinfadt, P.L.S. date  
 Iowa License No. 14677  
 My License Renewal Date is Dec. 31, 2000.

List Corners to be Indexed			
Corners	Section	Twp	Range
S.W.	19	95	12
SE, SW, SW	19	95	12



116 W. BREMER AVE. PO BOX 148  
 WAVERLY, IOWA 50677  
 (319) 352-9444



Section 13-95-13  
 As referred to in  
 Engr. Tie Book

Chickasaw COUNTY

LAND SURVEY MONUMENT RECORD

13 13  
 Sec. 19 T. 95 N R. 12 W  
 Northwest Corner

All items to be completed. Please print or type.

1. Type of Monument  
 (check one)

- Section Corner
- Bench Mark
- Quarter Corner
- Other .....

2. Description of Evidence found and location.

Set 600 spk in joint of concrete pavement near Sta. 473+04.1 Rt 0.05' as per found references on record at county engineers office.

3. Description of monument and/or accessories established by you to perpetuate the location of this point.

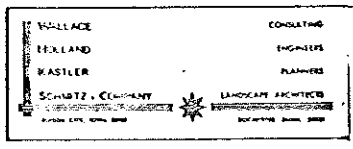
See sketch

Survey Crew  
 L. Boyer  
 T. Lovik  
 L. Thompson

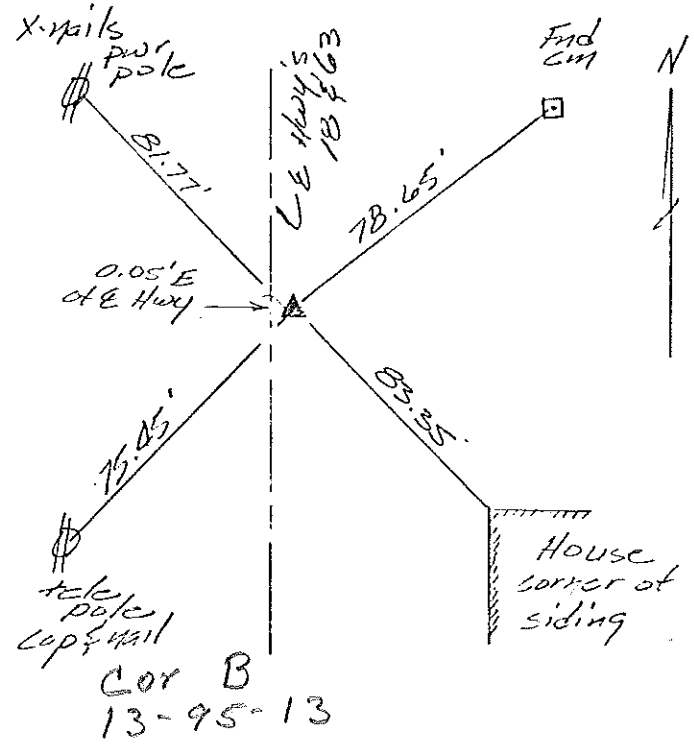
Date of Field Work 4-21-80

Signed Carl S. Kustler PLS. 5543

Firm Name



4. Sketch showing relative location of monument and reference points. Show supporting and/or contradictory evidence where applicable. (Minimum No. of reference points four (4)).



# UNITED STATES PUBLIC LAND SURVEY CORNER CERTIFICATE

OF

Land Survey Monuments situated in Section 19 24, Township 95 NORTH, Range 12 WEST, of the Fifth Principal Meridian, CHICKASAW County, Iowa. Previously recorded in (NONE) in County Recorder's Office.

(book, page, document number, etc.)

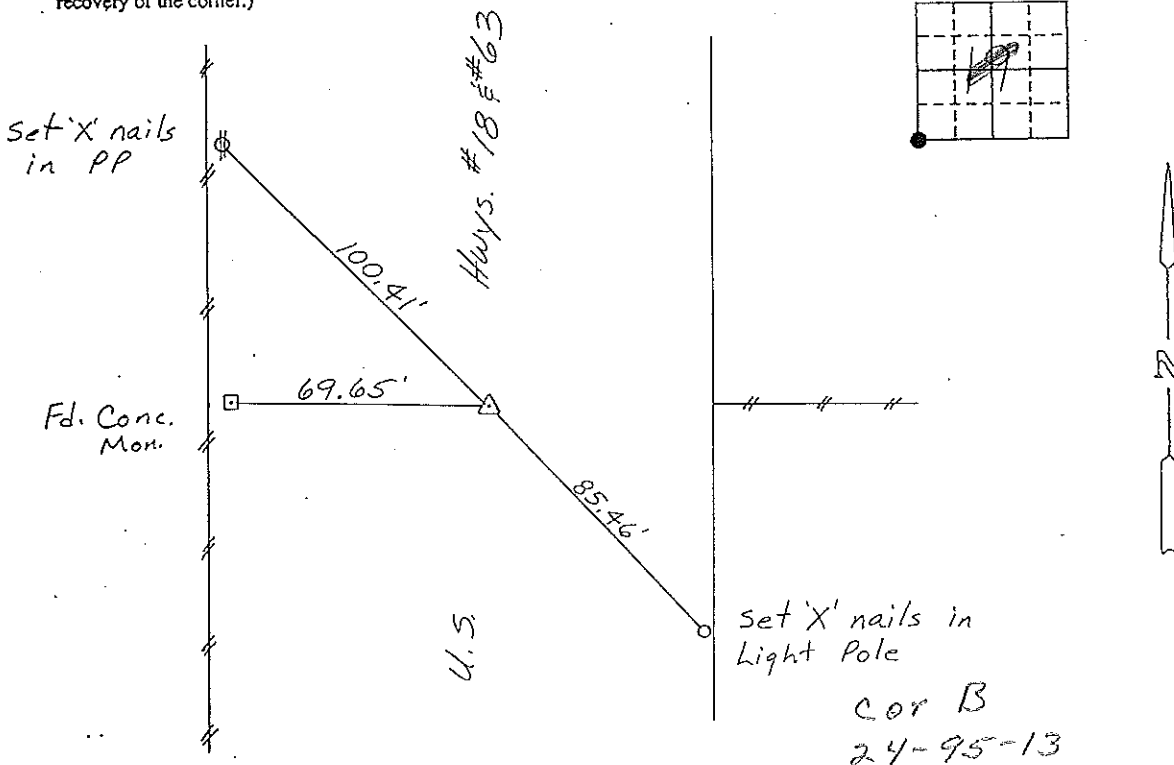
(Show reason for preparing this certificate, the evidence and detailed procedures used in establishing the corner positions and monumentation found or placed.)

Monument Description and Remarks: SW CORNER, SECTION 19-T95N-R12W:  
FOUND IDOT ALUMINUM CAP IN ASPHALT PAVEMENT.

## PLAN - VIEW

(Show a minimum of three reference ties to durable physical objects, relevant monuments and physical conditions that will enable recovery of the corner.)

Section 24-95-13  
As referred to in  
Engr. Tie Book



### SW CORNER SECTION 19-T95N-R12W

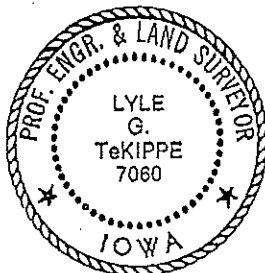
I hereby certify that the survey work was completed and this certificate was prepared by me or under my direct personal supervision and that I am a duly registered land surveyor under the laws of the state of Iowa.

Signature: Lyle G. TeKippe  
Name typed or printed: Lyle G. TeKippe

Date: 12-16-92 Reg. No. 7060

My Registration Expires December 31, 1992

Corners	List Corners to be Indexed		
	Section	Twp	Range
SW	19	95N	12W



SEAL

Cor B  
24-95-13  
Placed in tie  
book 12/28/92

151-47

"County Engineer's Copy"