

Instr. Number: 2025-2095  
 Recorded: 12/15/2025 at 11:15:53.0 AM  
 Pages 1  
 County Recording Fee: \$7.00  
 Iowa E-Filing Fee: \$3.00  
 Combined Fee: \$10.00  
 Revenue Tax:  
 Shirley Troyna RECORDER  
 Chickasaw County, Iowa

Prepared by & Return to: Kirk D. Reicks, HRS, L.L.C., 16 East Main Street, New Hampton, IA 50659, Phone 641-394-2725

### United States Public Land Survey Corner Certificate

Land Survey Monument situated in  
 Section 24, Township 95 North, Range 13 West of the Fifth Principal Meridian, Chickasaw County, Iowa.  
 On file in Document #2004-0479 in the County Recorder's Office.

This certificate is being prepared in compliance with Iowa Code Chapter 355.11 because:

- There is no certificate on file for this corner.
- There are no longer three valid ties of record.
- There are changes to reference ties of record.
- There is change of monumentation of record.
- To clarify description of record monument (ties).

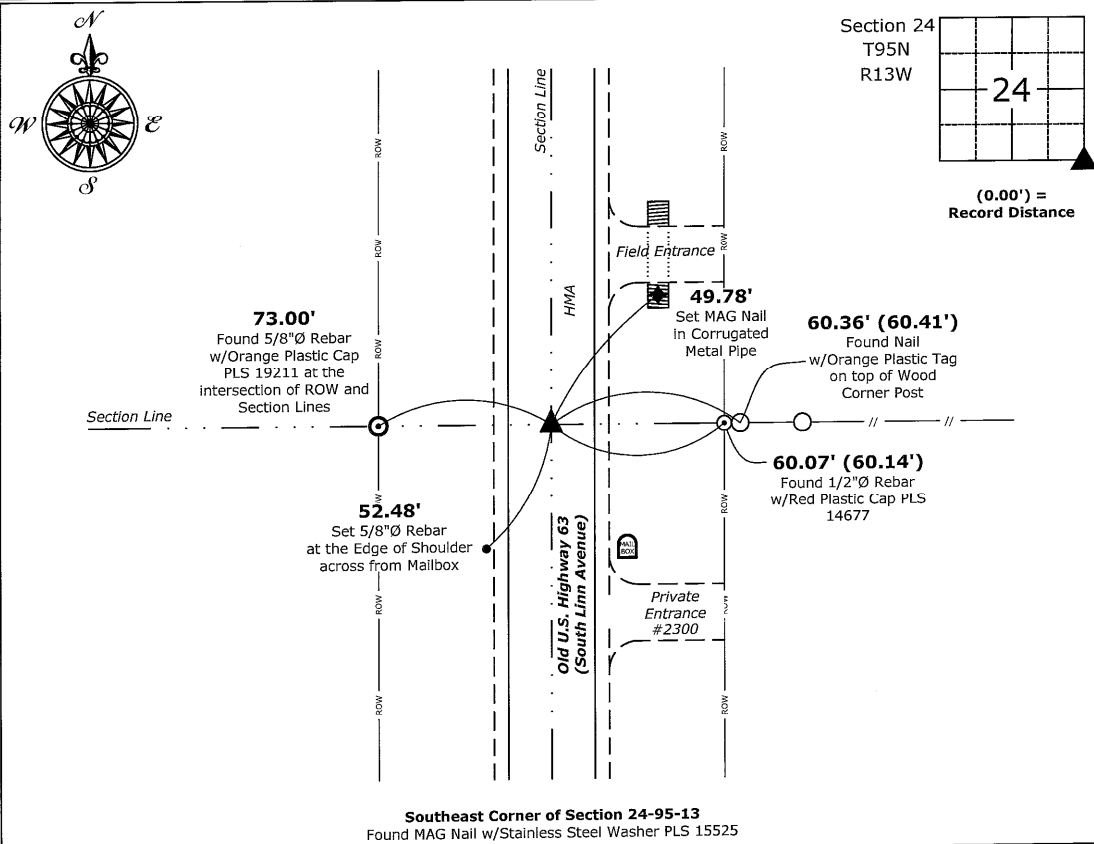
**Monument Description and Remarks:**

**Southeast Corner:**

Found MAG Nail w/Stainless Steel Washer PLS 15525 with information obtained from the previously recorded Section Corner Certificate. Monument was located at the request of the Chickasaw County Engineer's Office.

### Plan View - Not to Scale

(Show a minimum of three reference ties to durable physical objects, relevant monuments and physical conditions that will enable recovery of the corner.)



I hereby certify that this land surveying document was prepared and the related survey work was performed by me or under my direct personal supervision and that I am a duly licensed Land Surveyor under the laws of the State of Iowa.

*Kirk D. Reicks* 12-15-2025  
 Kirk D. Reicks Date:  
 License Number 19211  
 My license renewal date is December 31, 2026.  
 Sheets covered by this seal: Individual sheet only

List Corner to be Indexed			
Corner	Section	Township	Range
SE	24	95	13
Project Number: 2025-137			
FB: New Hampton 3, Page(s) 50			

File: S:\Projects - INFO\County Control Systems - INFO\CHICKASAW\CHICK-28 (New Hampton)\CHICK-28-2025-SW.dwg, 12/15/2025 7:46:27 AM